

# rpL7a/SURF3 IHC Antibody

Rabbit Polyclonal

Antigen Affinity Purified

Protein ID NP\_000963.1

Catalog No. IHC-00454

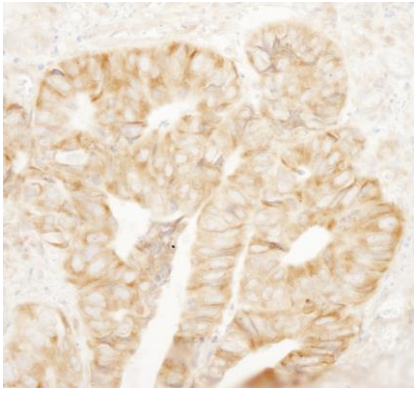
GeneID 6130

Lot No. IHC-00454-1

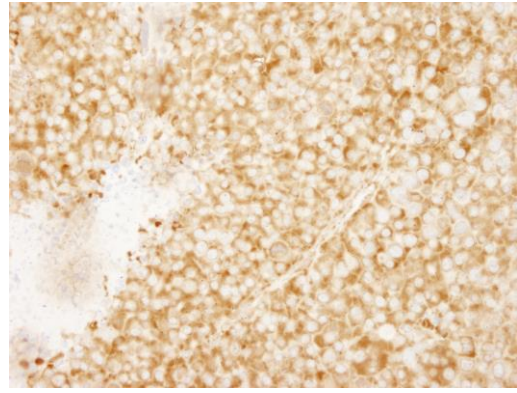


<b>APPLICATIONS</b>	IHC, IHC-IF
<b>SPECIES REACTIVITY</b>	Human, Mouse
<b>PRESUMED REACTIVITY</b>	Based on 100% sequence identity, this antibody is predicted to react with Rat, Zebrafish, X. laevis, X. tropicalis, Chicken, Turkey, Bovine, Horse, Rabbit, Guinea pig_10141, Pig, Orangutan and Monkey
<b>AMOUNT</b>	100 µl
<b>CONCENTRATION</b>	250 µg/ml
<b>STORAGE/SHELF LIFE</b>	2 – 8° C / 1 year from date of receipt
<b>PHYSICAL STATE</b>	Liquid
<b>BUFFER</b>	Tris-buffered Saline containing 0.1% BSA and 0.09% Sodium Azide
<b>ISOTYPE</b>	IgG
<b>ORIGIN</b>	USA
<b>PRODUCTION PROCEDURES</b>	<p>Antibody was affinity purified using an epitope specific to rpL7a/SURF3 immobilized on solid support.</p> <p>The epitope recognized by IHC-00454 maps to a region between residue 215 and the C-terminus (residue 266) of human Ribosomal Protein L7a using the numbering given in entry NP_000963.1 (GeneID 6130).</p> <p>Immunoglobulin concentration was determined by extinction coefficient: absorbance at 280 nm of 1.4 equals 1.0 mg of IgG.</p>
<b>APPLICATIONS</b>	<p>Centrifuge tube to remove product from lid. Optimal working dilutions should be determined experimentally by the investigator. Prepare working dilution immediately before use.</p> <p>Immunohistochemistry 1:100 – 1:500</p> <p>Immunofluorescence 1:50 – 1:500 (IHC)</p>
<b>APPLICATION NOTES</b>	<p>Epitope exposure is recommended.</p> <p>Epitope exposure with tris-EDTA pH9.0 buffer will enhance staining.</p> <p>Likely to work with frozen sections.</p> <p>In some cases, the antibody may be diluted further than indicated.</p>
<b>IHC HUMAN CONTROLS</b>	Breast Carcinoma, Colon Carcinoma, Non-Small Cell Lung Cancer, Ovarian Carcinoma, Stomach Adenocarcinoma
<b>IHC MOUSE CONTROLS</b>	Colon Carcinoma CT26, Renal Cell Carcinoma, Teratoma
<b>ADDITIONAL INFO</b>	<p><a href="https://www.bethyl.com/product/IHC-00454">https://www.bethyl.com/product/IHC-00454</a></p> <p>Use the link above to view SDS, a current list of citations, and other product specific information.</p>

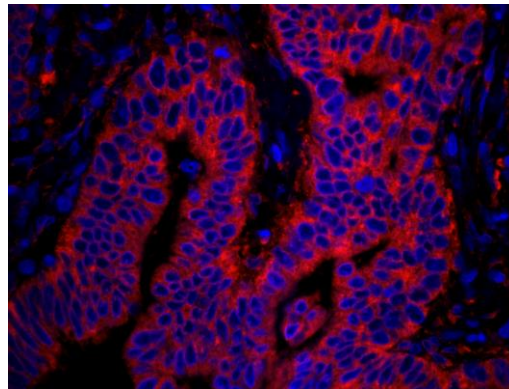
This document certifies that this product has met all of the quality control standards defined by Bethyl Laboratories, Inc.  
Eric McIntush, PhD | Chief Scientific Officer Date: June 21, 2019



**Detection of human rpL7a/SURF3 by immunohistochemistry.** *Sample:* FFPE section of human colon carcinoma. *Antibody:* Affinity purified rabbit anti-rpL7a/SURF3 (Cat. No. IHC-00454) used at a dilution of 1:250. *Detection:* DAB



**Detection of mouse rpL7a/SURF3 by immunohistochemistry.** *Sample:* FFPE section of mouse renal cell carcinoma. *Antibody:* Affinity purified rabbit anti-rpL7a/SURF3 (Cat. No. IHC-00454) used at a dilution of 1:250. *Detection:* DAB



**Detection of human rpL7a/SURF3 by immunofluorescence.** *Sample:* FFPE section of human colon carcinoma. *Antibody:* Affinity purified rabbit anti-rpL7a/SURF3 (Cat. No. IHC-00454) used at a dilution of 1:100. *Detection:* Red-fluorescent goat anti-rabbit IgG highly cross-adsorbed Antibody used at a dilution of 1:100.