

# FOXO3a IHC Antibody

Rabbit Polyclonal

Antigen Affinity Purified

Protein ID O43524

Catalog No. IHC-00434

GeneID 2309

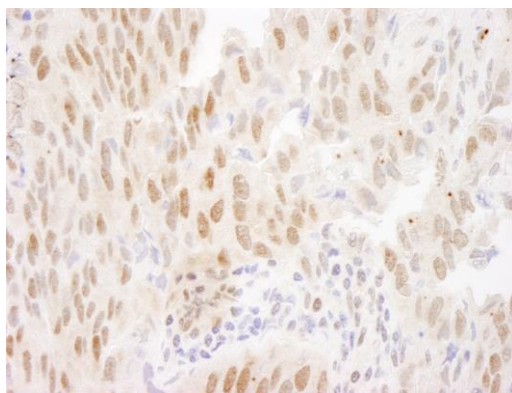
Lot No. IHC-00434-1



<b>APPLICATIONS</b>	IHC
<b>SPECIES REACTIVITY</b>	Human, Mouse
<b>PRESUMED REACTIVITY</b>	Based on 100% sequence identity, this antibody is predicted to react with Rat, Chicken, Turkey, Sheep, Bovine, Dog, Horse, Rabbit, Guinea pig_10141, Pig, Panda, Orangutan, Monkey, Gorilla and Chimpanzee
<b>AMOUNT</b>	100 µl
<b>CONCENTRATION</b>	250 µg/ml
<b>STORAGE/SHELF LIFE</b>	2 – 8° C / 1 year from date of receipt
<b>PHYSICAL STATE</b>	Liquid
<b>BUFFER</b>	Tris-buffered Saline containing 0.1% BSA and 0.09% Sodium Azide
<b>ISOTYPE</b>	IgG
<b>ORIGIN</b>	USA
<b>PRODUCTION PROCEDURES</b>	Antibody was affinity purified using an epitope specific to FOXO3a immobilized on solid support.  The epitope recognized by IHC-00434 maps to a region between residue 625 and the C-terminus (residue 673) of human Forkhead Box O3a using the numbering given in Swiss-Prot entry O43524 (GeneID 2309).
<b>APPLICATIONS</b>	Centrifuge tube to remove product from lid. Optimal working dilutions should be determined experimentally by the investigator. Prepare working dilution immediately before use.  Immunohistochemistry 1:100 – 1:500
<b>APPLICATION NOTES</b>	Epitope exposure is recommended.  Epitope exposure with tris-EDTA pH9.0 buffer will enhance staining.  Likely to work with frozen sections.  In some cases, the antibody may be diluted further than indicated.
<b>IHC HUMAN CONTROLS</b>	Breast Carcinoma, Colon Carcinoma, Linitis Plastica Stomach Cancer, Non-Small Cell Lung Cancer, Prostate Carcinoma
<b>IHC MOUSE CONTROLS</b>	Renal Cell Carcinoma
<b>ADDITIONAL INFO</b>	<a href="https://www.bethyl.com/product/IHC-00434">https://www.bethyl.com/product/IHC-00434</a> Use the link above to view SDS, a current list of citations, and other product specific information.

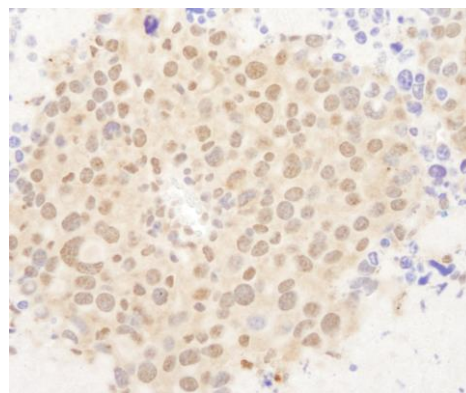
This document certifies that this product has met all of the quality control standards defined by Bethyl Laboratories, Inc.  
Eric McIntush, PhD | Chief Scientific Officer

Date: June 21, 2019

**Detection of human FOXO3a by immunohistochemistry.**

*Sample:* FFPE section of human breast carcinoma.

*Antibody:* Affinity purified rabbit anti-FOXO3a (Cat. No. IHC-00434) used at a dilution of 1:250. *Detection:* DAB

**Detection of mouse FOXO3a by immunohistochemistry.**

*Sample:* FFPE section of mouse renal cell carcinoma.

*Antibody:* Affinity purified rabbit anti-FOXO3a (Cat. No. IHC-00434) used at a dilution of 1:250. *Detection:* DAB