

# Rictor IHC Antibody

Rabbit Polyclonal

Antigen Affinity Purified

Protein ID Q6R327

Catalog No. IHC-00429

GeneID 253260

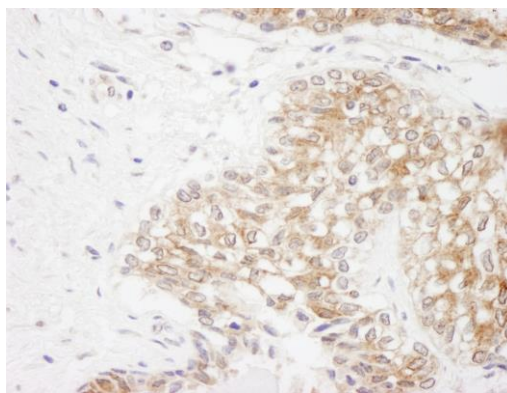
Lot No. IHC-00429-1



<b>APPLICATIONS</b>	IHC
<b>SPECIES REACTIVITY</b>	Human
<b>PRESUMED REACTIVITY</b>	Based on 100% sequence identity, this antibody is predicted to react with Mouse, Dog, Orangutan, Monkey, Gorilla, Chimpanzee, Northern white-cheeked gibbon and White-tufted-ear marmoset
<b>AMOUNT</b>	100 µl
<b>CONCENTRATION</b>	250 µg/ml
<b>STORAGE/SHELF LIFE</b>	2 – 8° C / 1 year from date of receipt
<b>PHYSICAL STATE</b>	Liquid
<b>BUFFER</b>	Tris-buffered Saline containing 0.1% BSA and 0.09% Sodium Azide
<b>ISOTYPE</b>	IgG
<b>ORIGIN</b>	USA
<b>PRODUCTION PROCEDURES</b>	Antibody was affinity purified using an epitope specific to Rictor immobilized on solid support.  The epitope recognized by IHC-00429 maps to a region between residue 1650 and the C-terminus (residue 1708) of human Rapamycin-Insensitive Companion of mTOR using the numbering given in TrEMBL entry Q6R327 (GeneID 253260).
<b>APPLICATIONS</b>	Centrifuge tube to remove product from lid. Optimal working dilutions should be determined experimentally by the investigator. Prepare working dilution immediately before use.  Immunohistochemistry 1:100 – 1:500
<b>APPLICATION NOTES</b>	Epitope exposure is recommended.  Epitope exposure with tris-EDTA pH9.0 buffer will enhance staining.  Likely to work with frozen sections.  In some cases, the antibody may be diluted further than indicated.
<b>IHC HUMAN CONTROLS</b>	Non-Small Cell Lung Cancer, Prostate Carcinoma, Stomach Adenocarcinoma
<b>ADDITIONAL INFO</b>	<a href="https://www.bethyl.com/product/IHC-00429">https://www.bethyl.com/product/IHC-00429</a> Use the link above to view SDS, a current list of citations, and other product specific information.

This document certifies that this product has met all of the quality control standards defined by Bethyl Laboratories, Inc.  
Eric McIntush, PhD | Chief Scientific Officer

Date: June 21, 2019

**Detection of human Rictor by immunohistochemistry.**

*Sample:* FFPE section of human prostate carcinoma

*Antibody:* Affinity purified rabbit anti-Rictor (Cat. No.

IHC-00429) used at a dilution of 1:250. *Detection:* DAB