

HDAC3 IHC Antibody

Rabbit Polyclonal

Antigen Affinity Purified

Protein ID O15379

Catalog No. IHC-00428

GeneID 8841

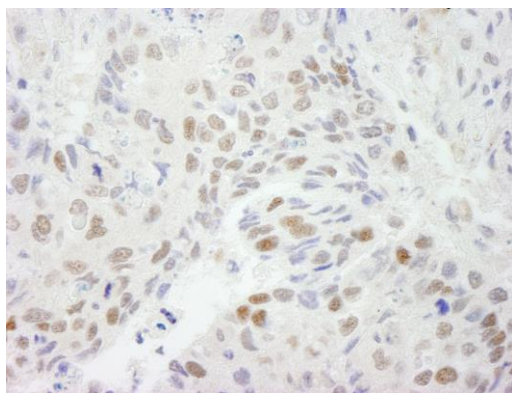
Lot No. IHC-00428-1



APPLICATIONS	IHC
SPECIES REACTIVITY	Human, Mouse
PRESUMED REACTIVITY	Based on 100% sequence identity, this antibody is predicted to react with Rat, Bovine, Dog, Horse, Rabbit, Guinea pig_10141, Pig, Panda, Orangutan, Monkey, Gorilla, Chimpanzee and Crab-eating macaque
AMOUNT	100 µl
CONCENTRATION	250 µg/ml
STORAGE/SHELF LIFE	2 – 8° C / 1 year from date of receipt
PHYSICAL STATE	Liquid
BUFFER	Tris-buffered Saline containing 0.1% BSA and 0.09% Sodium Azide
ISOTYPE	IgG
ORIGIN	USA
PRODUCTION PROCEDURES	Antibody was affinity purified using an epitope specific to HDAC3 immobilized on solid support. The epitope recognized by IHC-00428 maps to a region between residue 375 and the C-terminus (residue 428) of human Histone Deacetylase 3 using the numbering given in Swiss-Prot entry O15379 (GeneID 8841).
APPLICATIONS	Centrifuge tube to remove product from lid. Optimal working dilutions should be determined experimentally by the investigator. Prepare working dilution immediately before use. Immunohistochemistry 1:100 – 1:500
APPLICATION NOTES	Epitope exposure is recommended. Epitope exposure with tris-EDTA pH9.0 buffer will enhance staining. Likely to work with frozen sections.
IHC HUMAN CONTROLS	In some cases, the antibody may be diluted further than indicated. Breast Carcinoma, Non-Small Cell Lung Cancer, Prostate Carcinoma
IHC MOUSE CONTROLS	Renal Cell Carcinoma
ADDITIONAL INFO	https://www.bethyl.com/product/IHC-00428 Use the link above to view SDS, a current list of citations, and other product specific information.

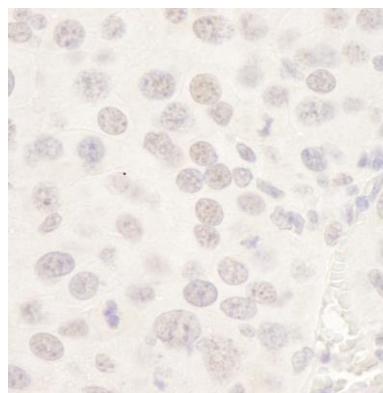
This document certifies that this product has met all of the quality control standards defined by Bethyl Laboratories, Inc.
Eric McIntush, PhD | Chief Scientific Officer

Date: June 21, 2019

**Detection of human HDAC3 by immunohistochemistry.**

Sample: FFPE section of human non-small cell lung cancer.

Antibody: Affinity purified rabbit anti-HDAC3 (Cat. No. IHC-00428) used at a dilution of 1:250. *Detection:* DAB

**Detection of mouse HDAC3 by immunohistochemistry.**

Sample: FFPE section of mouse renal cell carcinoma.

Antibody: Affinity purified rabbit anti-HDAC3 (Cat. No. IHC-00428) used at a dilution of 1:250. *Detection:* DAB