

Phospho RPA32 (S4/S8) IHC Antibody

Rabbit Polyclonal

Antigen Affinity Purified Protein ID NP_002937.1

Catalog No. IHC-00422 GeneID 6118

Lot No. IHC-00422-4

APPLICATIONS	IHC, IHC-IF
SPECIES REACTIVITY	Human, Mouse
PRESUMED REACTIVITY	Based on 100% sequence identity, this antibody is predicted to react with Orangutan, Monkey, Gorilla, Little brown bat and White-tufted-ear marmoset
AMOUNT	100 µl
CONCENTRATION	100 µg/ml
STORAGE/SHELF LIFE	2 – 8°C / 1 year from date of receipt
PHYSICAL STATE	Liquid
BUFFER	Tris-buffered Saline containing 0.1% BSA and 0.09% Sodium Azide
ISOTYPE	IgG
ORIGIN	USA
PRODUCTION PROCEDURES	Immunogen was a dually phosphorylated synthetic peptide, which represented a portion of human replication protein A2, 32 kDa surrounding phosphorylated serines that corresponded to positions 4 and 8 using the numbering given in entry NP_002937.1 (GeneID 6118).

Antibody was affinity purified using the peptide immobilized on solid support. Antibody concentration was determined by extinction coefficient: absorbance at 280 nm of 1.4 equals 1.0 mg of IgG.

APPLICATIONS Centrifuge tube to remove product from lid. Optimal working dilutions should be determined experimentally by the investigator. Prepare working dilution immediately before use.

Immunohistochemistry 1:100 – 1:500

Immunofluorescence 1:50 – 1:500
(IHC)

APPLICATION NOTES Epitope exposure is recommended.

Epitope exposure with tris-EDTA pH9.0 buffer will enhance staining.

Likely to work with frozen sections.

In some cases, the antibody may be diluted further than indicated.

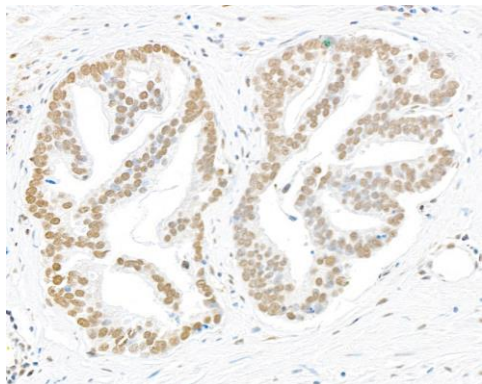
IHC HUMAN CONTROLS Breast Carcinoma, Colon Carcinoma, Ovarian Carcinoma, Prostate Carcinoma, Stomach Adenocarcinoma, Testicular Seminoma

IHC MOUSE CONTROLS Colon Carcinoma CT26

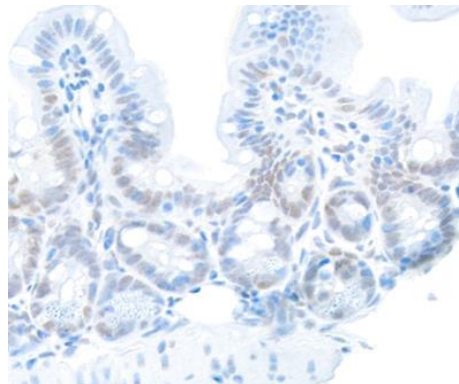
ADDITIONAL INFO <https://www.bethyl.com/product/IHC-00422>

Use the link above to view SDS, a current list of citations, and other product specific information.

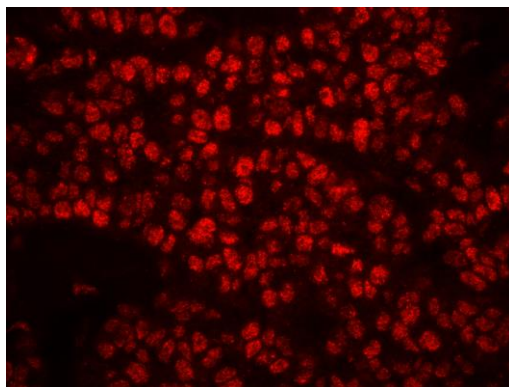
This document certifies that this product has met all of the quality control standards defined by Bethyl Laboratories, Inc.
Michael Spencer, PhD Date: February 28, 2022



Detection of human Phospho-RPA32 (S4/S8) by immunohistochemistry. *Sample:* FFPE section of human prostate carcinoma. *Antibody:* Affinity purified rabbit anti-Phospho-RPA32 (S4/S8) (IHC-00422 Lot 4) used at a dilution of 1:250. *Detection:* DAB



Detection of mouse Phospho-RPA32 (S4/S8) by immunohistochemistry. *Sample:* FFPE section of mouse gut. *Antibody:* Affinity purified rabbit anti-Phospho-RPA32 (S4/S8) (IHC-00422 Lot 4) used at a dilution of 1:250. *Detection:* DAB



Detection of human Phospho-RPA32 (S4/S8) by immunohistochemistry. *Samples:* FFPE section of human breast carcinoma. *Antibody:* Affinity purified rabbit anti-Phospho-RPA32 (S4/S8) (Cat. No. IHC-00422) used at a dilution of 1:100. *Detection:* Red-fluorescent goat anti-rabbit IgG highly cross-adsorbed Antibody used at a dilution of 1:100.