

# ZEB1 IHC Antibody

Rabbit Polyclonal

Antigen Affinity Purified

Protein ID NP\_110378.3

Catalog No. IHC-00419

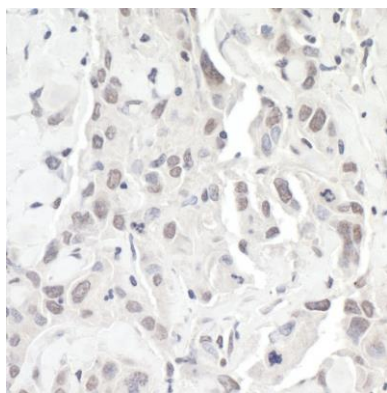
GeneID 6935

Lot No. IHC-00419-2



|                              |   |
|------------------------------|---|
| <b>APPLICATIONS</b>          | IHC   |
| <b>SPECIES REACTIVITY</b>    | Human, Mouse  |
| <b>PRESUMED REACTIVITY</b>   | Based on 100% sequence identity, this antibody is predicted to react with Orangutan, Monkey, Gorilla, Chimpanzee, Northern white-cheeked gibbon, Crab-eating macaque and White-tufted-ear marmoset  |
| <b>AMOUNT</b>                | 100 µl  |
| <b>CONCENTRATION</b>         | 100 µg/ml   |
| <b>STORAGE/SHELF LIFE</b>    | 2 – 8° C / 1 year from date of receipt  |
| <b>PHYSICAL STATE</b>        | Liquid  |
| <b>BUFFER</b>                | Tris-buffered Saline containing 0.1% BSA and 0.09% Sodium Azide   |
| <b>ISOTYPE</b>               | IgG   |
| <b>ORIGIN</b>                | USA   |
| <b>PRODUCTION PROCEDURES</b> | <p>Antibody was affinity purified using an epitope specific to ZEB1 immobilized on solid support.</p> <p>The epitope recognized by IHC-00419 maps to a region between residue 1074 and 1124 of human zinc finger E-box binding homeobox 1 using the numbering given in entry NP_110378.3 (GeneID 6935).</p> <p>Antibody concentration was determined by extinction coefficient: absorbance at 280 nm of 1.4 equals 1.0 mg of IgG.</p> |
| <b>APPLICATIONS</b>          | <p>Centrifuge tube to remove product from lid. Optimal working dilutions should be determined experimentally by the investigator. Prepare working dilution immediately before use.</p> <p>Immunohistochemistry 1:100 – 1:500. Epitope retrieval with citrate buffer pH 6.0 is recommended for FFPE tissue sections.</p>   |
| <b>APPLICATION NOTES</b>     | <p>Epitope exposure is recommended.</p> <p>Epitope exposure with citrate buffer will enhance staining.</p> <p>Likely to work with frozen sections.</p> <p>In some cases, the antibody may be diluted further than indicated.</p>  |
| <b>IHC HUMAN CONTROLS</b>    | Breast Carcinoma, Prostate Carcinoma  |
| <b>IHC MOUSE CONTROLS</b>    | Colon Carcinoma CT26, Teratoma  |
| <b>ADDITIONAL INFO</b>       | <p><a href="https://www.bethyl.com/product/IHC-00419">https://www.bethyl.com/product/IHC-00419</a></p> <p>Use the link above to view SDS, a current list of citations, and other product specific information.</p>  |

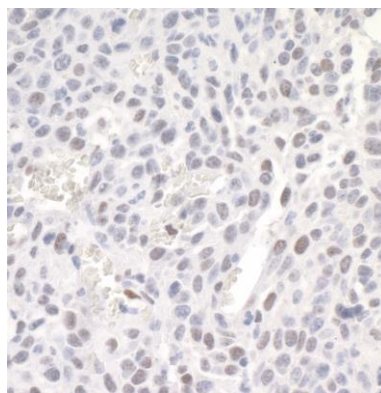
This document certifies that this product has met all of the quality control standards defined by Bethyl Laboratories, Inc.  
Eric McIntush, PhD | Chief Scientific Officer Date: June 21, 2019

**Detection of human ZEB1 by immunohistochemistry.**

*Sample:* FFPE section of human breast carcinoma.

*Antibody:* Affinity purified rabbit anti ZEB1 (Cat. No.

IHC-00419-2) used at a dilution of 1:500. *Detection:* DAB

**Detection of mouse ZEB1 by immunohistochemistry.**

*Sample:* FFPE section of mouse CT26 tumor. *Antibody:*

Affinity purified rabbit anti ZEB1 (Cat. No. IHC-00419-2)

used at a dilution of 1:500. *Detection:* DAB