

INT8 IHC Antibody

Rabbit Polyclonal

Antigen Affinity Purified

Protein ID Q7Z314

Catalog No. IHC-00415

GeneID 55656

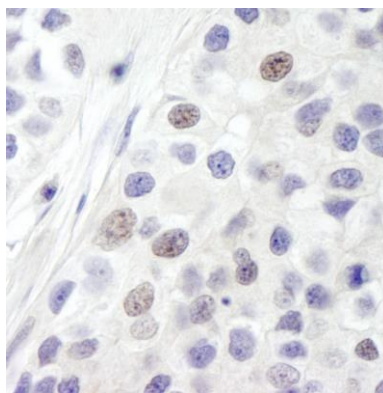
Lot No. IHC-00415-1



APPLICATIONS	IHC
SPECIES REACTIVITY	Human
PRESUMED REACTIVITY	Based on 100% sequence identity, this antibody is predicted to react with Rabbit, Guinea pig_10141, Orangutan, Monkey, Gorilla, Chimpanzee, Naked mole rat and Northern white-cheeked gibbon
AMOUNT	100 µl
CONCENTRATION	250 µg/ml
STORAGE/SHELF LIFE	2 – 8° C / 1 year from date of receipt
PHYSICAL STATE	Liquid
BUFFER	Tris-buffered Saline containing 0.1% BSA and 0.09% Sodium Azide
ISOTYPE	IgG
ORIGIN	USA
PRODUCTION PROCEDURES	<p>Antibody was affinity purified using an epitope specific to INT8 immobilized on solid support.</p> <p>The epitope recognized by IHC-00415 maps to a region between residues 200 and 250 of human Integrator complex subunit 8 using the numbering given in SwissProt entry Q75QN2 (GeneID 55656).</p> <p>Antibody concentration was determined by extinction coefficient: absorbance at 280 nm of 1.4 equals 1.0 mg of IgG.</p>
APPLICATIONS	<p>Centrifuge tube to remove product from lid. Optimal working dilutions should be determined experimentally by the investigator. Prepare working dilution immediately before use.</p> <p>Immunohistochemistry 1:100 – 1:500</p>
APPLICATION NOTES	<p>Epitope exposure is recommended.</p> <p>Epitope exposure with tris-EDTA pH9.0 buffer will enhance staining.</p> <p>Likely to work with frozen sections.</p> <p>In some cases, the antibody may be diluted further than indicated.</p>
IHC HUMAN CONTROLS	Anaplastic Thyroid Carcinoma, Breast Carcinoma
ADDITIONAL INFO	<p>https://www.bethyl.com/product/IHC-00415</p> <p>Use the link above to view SDS, a current list of citations, and other product specific information.</p>

This document certifies that this product has met all of the quality control standards defined by Bethyl Laboratories, Inc.
Eric McIntush, PhD | Chief Scientific Officer

Date: June 21, 2019

**Detection of human INT8 by immunohistochemistry.**

Sample: FFPE section of human breast carcinoma *Antibody:*

Affinity purified rabbit anti-INT8 (Cat. No. IHC-00415)

used at a dilution of 1:250. *Detection:* DAB