

KIAA0082 IHC Antibody

Rabbit Polyclonal

Antigen Affinity Purified

Protein ID Q8N1G2

Catalog No. IHC-00411

GeneID 23070

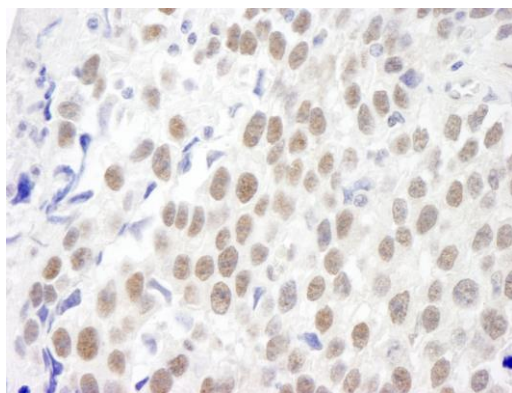
Lot No. IHC-00411-1



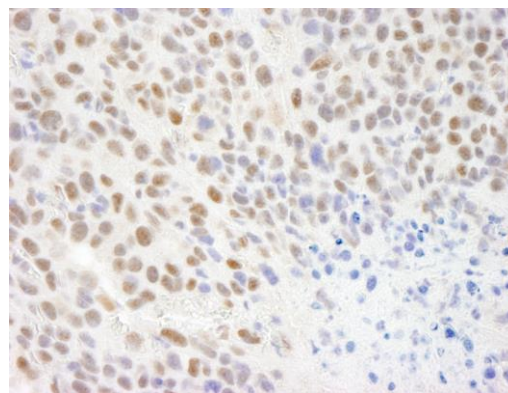
APPLICATIONS	IHC
SPECIES REACTIVITY	Human, Mouse
PRESUMED REACTIVITY	Based on 100% sequence identity, this antibody is predicted to react with Dog, Rabbit, Guinea pig_10141, Panda, Orangutan, Monkey, Gorilla, Chimpanzee, Naked mole rat and Small-eared galago
AMOUNT	100 µl
CONCENTRATION	250 µg/ml
STORAGE/SHELF LIFE	2 – 8° C / 1 year from date of receipt
PHYSICAL STATE	Liquid
BUFFER	Tris-buffered Saline containing 0.1% BSA and 0.09% Sodium Azide
ISOTYPE	IgG
ORIGIN	USA
PRODUCTION PROCEDURES	<p>Antibody was affinity purified using an epitope specific to KIAA0082 immobilized on solid support.</p> <p>The epitope recognized by IHC-00411 maps to a region between residues 100 and 150 of human KIAA0082 using the numbering given in TrEMBL entry Q8N1G2 (GeneID 23070).</p> <p>Antibody concentration was determined by extinction coefficient: absorbance at 280 nm of 1.4 equals 1.0 mg of IgG.</p>
APPLICATIONS	<p>Centrifuge tube to remove product from lid. Optimal working dilutions should be determined experimentally by the investigator. Prepare working dilution immediately before use.</p> <p>Immunohistochemistry 1:100 – 1:500</p>
APPLICATION NOTES	<p>Epitope exposure is recommended.</p> <p>Epitope exposure with tris-EDTA pH9.0 buffer will enhance staining.</p> <p>Likely to work with frozen sections.</p>
IHC HUMAN CONTROLS	In some cases, the antibody may be diluted further than indicated. Anaplastic Thyroid Carcinoma, Breast Carcinoma, Colon Carcinoma, Prostate Carcinoma, Testicular Seminoma
IHC MOUSE CONTROLS	Colon Carcinoma CT26
ADDITIONAL INFO	<p>https://www.bethyl.com/product/IHC-00411</p> <p>Use the link above to view SDS, a current list of citations, and other product specific information.</p>

This document certifies that this product has met all of the quality control standards defined by Bethyl Laboratories, Inc.
Eric McIntush, PhD | Chief Scientific Officer

Date: June 21, 2019

**Detection of human KIAA0082 by immunohistochemistry.**

Sample: FFPE section of human seminoma. *Antibody:* Affinity purified rabbit anti-KIAA0082 (Cat. No. IHC-00411) used at a dilution of 1:250. *Detection:* DAB

**Detection of mouse KIAA0082 by immunohistochemistry.**

Sample: FFPE section of mouse colon carcinoma. *Antibody:* Affinity purified rabbit anti-KIAA0082 (Cat. No. IHC-00411) used at a dilution of 1:250. *Detection:* DAB