

Artemis IHC Antibody

Rabbit Polyclonal

Antigen Affinity Purified

Protein ID Q96SD1

Catalog No. IHC-00408

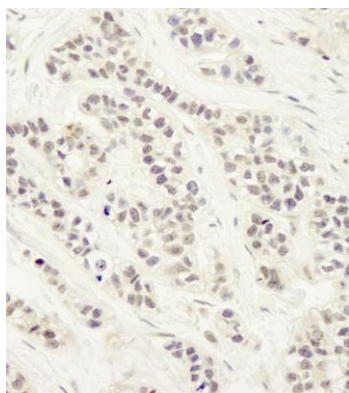
GeneID 64421

Lot No. IHC-00408-1



APPLICATIONS	IHC
SPECIES REACTIVITY	Human
PRESUMED REACTIVITY	Based on 100% sequence identity, this antibody is predicted to react with Orangutan, Chimpanzee, Bolivian red howler monkey, Northern white-cheeked gibbon and Francois's leaf monkey
AMOUNT	100 µl
CONCENTRATION	250 µg/ml
STORAGE/SHELF LIFE	2 - 8° C / 1 year from date of receipt
PHYSICAL STATE	Liquid
BUFFER	Tris-buffered Saline containing 0.1% BSA and 0.09% Sodium Azide
ISOTYPE	IgG
ORIGIN	USA
PRODUCTION PROCEDURES	<p>Antibody was affinity purified using an epitope specific to Artemis immobilized on solid support.</p> <p>The epitope recognized by IHC-00408 maps to a region between residues 650 and the C-terminus (residue 692) of human DNA cross-link repair 1C (aka Artemis) using the numbering given in TrEMBL entry Q96SD1 (GeneID 64421).</p> <p>Antibody concentration was determined by extinction coefficient: absorbance at 280 nm of 1.4 equals 1.0 mg of IgG.</p>
APPLICATIONS	<p>Centrifuge tube to remove product from lid. Optimal working dilutions should be determined experimentally by the investigator. Prepare working dilution immediately before use.</p> <p>Immunohistochemistry 1:100 - 1:500</p>
APPLICATION NOTES	<p>Epitope exposure is recommended.</p> <p>Epitope exposure with tris-EDTA pH9.0 buffer will enhance staining.</p> <p>Likely to work with frozen sections.</p>
IHC HUMAN CONTROLS	<p>In some cases, the antibody may be diluted further than indicated.</p> <p>Anaplastic Thyroid Carcinoma, Breast Carcinoma, Colon Carcinoma, Prostate Carcinoma, Stomach Adenocarcinoma, Testicular Seminoma</p>
ADDITIONAL INFO	<p>https://www.bethyl.com/product/IHC-00408</p> <p>Use the link above to view SDS, a current list of citations, and other product specific information.</p>

This document certifies that this product has met all of the quality control standards defined by Bethyl Laboratories, Inc.
Eric McIntush, PhD | Chief Scientific Officer Date: June 21, 2019

**Detection of human Artemis by immunohistochemistry.**

Sample: FFPE section of human breast carcinoma.

Antibody: Affinity purified rabbit anti-Artemis (Cat. No. IHC-00408) used at a dilution of 1:250. *Detection:* DAB