

Phospho RNA Polymerase II (S2) IHC Antibody

Rabbit Polyclonal

Antigen Affinity Purified

Protein ID NP_000928.1

Catalog No. IHC-00386

GeneID 5430

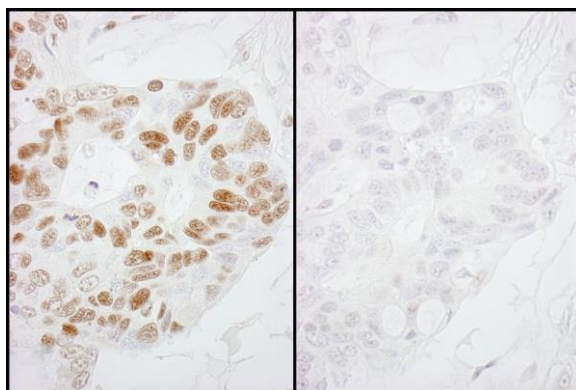
Lot No. IHC-00386-1



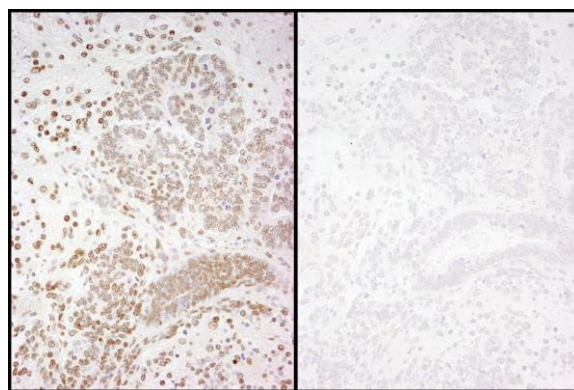
APPLICATIONS	IHC
SPECIES REACTIVITY	Human, Mouse
PRESUMED REACTIVITY	Based on 100% sequence identity, this antibody is predicted to react with Rat, D. melanogaster, Zebrafish, X. tropicalis, Bovine, Dog, Rabbit, Pig, Panda, Orangutan, Monkey, Gorilla and Chimpanzee
AMOUNT	100 µl
CONCENTRATION	100 µg/ml
STORAGE/SHELF LIFE	2 – 8° C / 1 year from date of receipt
PHYSICAL STATE	Liquid
BUFFER	Tris-buffered Saline containing 0.1% BSA and 0.09% Sodium Azide
ISOTYPE	IgG
ORIGIN	USA
PRODUCTION PROCEDURES	<p>Antibody was affinity purified using an epitope specific to Phospho RNA Polymerase II (S2) immobilized on solid support.</p> <p>Immunogen for IHC-00386 was a phosphorylated synthetic peptide, which represented a portion of human RNA Polymerase II (GeneID 5430) around serine 2 of the C-terminal repeat YSPTSPS.</p> <p>Antibody concentration was determined by extinction coefficient: absorbance at 280 nm of 1.4 equals 1.0 mg of IgG.</p>
APPLICATIONS	<p>Centrifuge tube to remove product from lid. Optimal working dilutions should be determined experimentally by the investigator. Prepare working dilution immediately before use.</p> <p>Immunohistochemistry 1:100 – 1:500</p>
APPLICATION NOTES	<p>Epitope exposure is recommended.</p> <p>Epitope exposure with citrate buffer will enhance staining.</p> <p>Likely to work with frozen sections.</p> <p>In some cases, the antibody may be diluted further than indicated.</p>
IHC HUMAN CONTROLS	Breast Carcinoma, Colon Carcinoma, Laryngeal Squamous Cell Carcinoma, Non-Small Cell Lung Cancer, Ovarian Carcinoma, Prostate Carcinoma, Small Cell Lung Cancer, Testicular Seminoma
IHC MOUSE CONTROLS	Squamous Cell Carcinoma, Teratoma
ADDITIONAL INFO	<p>https://www.bethyl.com/product/IHC-00386</p> <p>Use the link above to view SDS, a current list of citations, and other product specific information.</p>

This document certifies that this product has met all of the quality control standards defined by Bethyl Laboratories, Inc.
Eric McIntush, PhD | Chief Scientific Officer

Date: June 21, 2019



Detection of human Phospho-RNA Polymerase II (S2) by immunohistochemistry. *Samples:* FFPE serial sections of human ovarian carcinoma. Mock phosphatase treated section (left) or calf intestinal phosphatase-treated section (right) immunostained for Phospho-RNA Polymerase II (S2). *Antibody:* Affinity purified rabbit anti-Phospho-RNA Polymerase II (S2) (Cat. No. IHC-00386) used at a dilution of 1:250. *Detection:* DAB



Detection of mouse Phospho-RNA Polymerase II (S2) by immunohistochemistry. *Samples:* FFPE serial sections of mouse teratoma. Mock phosphatase treated section (left) or calf intestinal phosphatase-treated section (right) immunostained for Phospho-RNA Polymerase II (S2). *Antibody:* Affinity purified rabbit anti-Phospho-RNA Polymerase II (S2) (Cat. No. IHC-00386) used at a dilution of 1:250. *Detection:* DAB