

# COBRA1 IHC Antibody

Rabbit Polyclonal

Antigen Affinity Purified

Protein ID NP\_056271.2

Catalog No. IHC-00384

GeneID 25920

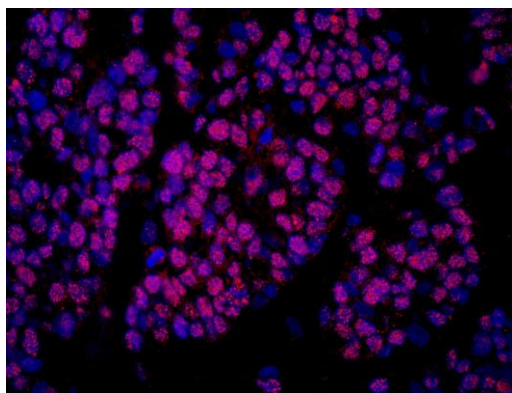
Lot No. IHC-00384-1



|                              |                                                                                                                                                                                                                                                                                                                                                                                                                     |
|------------------------------|---------------------------------------------------------------------------------------------------------------------------------------------------------------------------------------------------------------------------------------------------------------------------------------------------------------------------------------------------------------------------------------------------------------------|
| <b>APPLICATIONS</b>          | IHC, IHC-IF                                                                                                                                                                                                                                                                                                                                                                                                         |
| <b>SPECIES REACTIVITY</b>    | Human                                                                                                                                                                                                                                                                                                                                                                                                               |
| <b>PRESUMED REACTIVITY</b>   | Based on 100% sequence identity, this antibody is predicted to react with Orangutan, Monkey, Gorilla, Chimpanzee and White-tufted-ear marmoset                                                                                                                                                                                                                                                                      |
| <b>AMOUNT</b>                | 100 µl                                                                                                                                                                                                                                                                                                                                                                                                              |
| <b>CONCENTRATION</b>         | 250 µg/ml                                                                                                                                                                                                                                                                                                                                                                                                           |
| <b>STORAGE/SHELF LIFE</b>    | 2 - 8° C / 1 year from date of receipt                                                                                                                                                                                                                                                                                                                                                                              |
| <b>PHYSICAL STATE</b>        | Liquid                                                                                                                                                                                                                                                                                                                                                                                                              |
| <b>BUFFER</b>                | Tris-buffered Saline containing 0.1% BSA and 0.09% Sodium Azide                                                                                                                                                                                                                                                                                                                                                     |
| <b>ISOTYPE</b>               | IgG                                                                                                                                                                                                                                                                                                                                                                                                                 |
| <b>ORIGIN</b>                | USA                                                                                                                                                                                                                                                                                                                                                                                                                 |
| <b>PRODUCTION PROCEDURES</b> | <p>Antibody was affinity purified using an epitope specific to COBRA1 immobilized on solid support.</p> <p>The epitope recognized by IHC-00384 maps to a region between residue 530 and 580 of human cofactor of BRCA1 using the numbering given in entry NP_056271.2 (GeneID 25920).</p> <p>Antibody concentration was determined by extinction coefficient: absorbance at 280 nm of 1.4 equals 1.0 mg of IgG.</p> |
| <b>APPLICATIONS</b>          | <p>Centrifuge tube to remove product from lid. Optimal working dilutions should be determined experimentally by the investigator. Prepare working dilution immediately before use.</p> <p>Immunohistochemistry 1:100 - 1:500</p> <p>Immunofluorescence 1:50 - 1:500 (IHC)</p>                                                                                                                                       |
| <b>APPLICATION NOTES</b>     | <p>Epitope exposure is recommended.</p> <p>Epitope exposure with citrate buffer will enhance staining.</p> <p>Likely to work with frozen sections.</p> <p>In some cases, the antibody may be diluted further than indicated.</p>                                                                                                                                                                                    |
| <b>IHC HUMAN CONTROLS</b>    | B-cell Lymphoma, Breast Carcinoma, Hodgkins Lymphoma, Linitis Plastica Stomach Cancer, Placenta, Prostate Carcinoma, Stomach Adenocarcinoma, Testicular Seminoma                                                                                                                                                                                                                                                    |
| <b>ADDITIONAL INFO</b>       | <p><a href="https://www.bethyl.com/product/IHC-00384">https://www.bethyl.com/product/IHC-00384</a></p> <p>Use the link above to view SDS, a current list of citations, and other product specific information.</p>                                                                                                                                                                                                  |

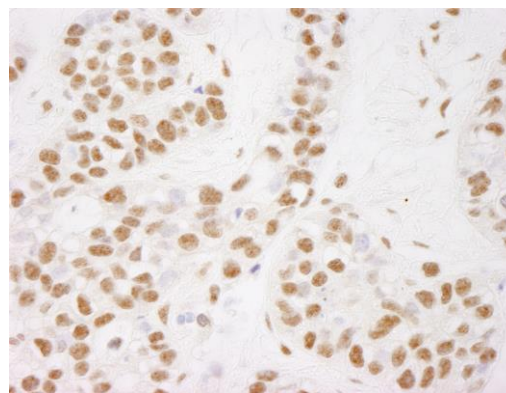
This document certifies that this product has met all of the quality control standards defined by Bethyl Laboratories, Inc.  
Eric McIntush, PhD | Chief Scientific Officer

Date: June 21, 2019

**Detection of human COBRA1 by immunohistochemistry.**

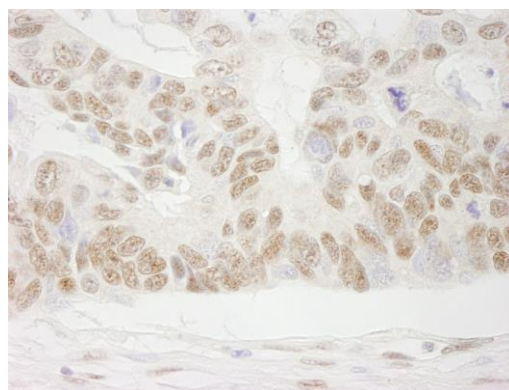
*Sample:* FFPE section of human breast carcinoma.

*Antibody:* Affinity purified rabbit anti-COBRA1 (Cat. No. IHC-00384) used at a dilution of 1:250. *Detection:* Red-fluorescent goat anti-rabbit IgG highly cross-adsorbed Antibody Hilyte Plus™ 555 used at a dilution of 1:100.

**Detection of human COBRA1 by immunohistochemistry.**

*Sample:* FFPE section of human breast carcinoma.

*Antibody:* Affinity purified rabbit anti-COBRA1 (Cat. No. IHC-00384) used at a dilution of 1:250. *Detection:* DAB

**Detection of human COBRA1 by immunohistochemistry.**

*Sample:* FFPE section of human ovarian carcinoma.

*Antibody:* Affinity purified rabbit anti-COBRA1 (Cat. No. IHC-00384) used at a dilution of 1:250. *Detection:* DAB