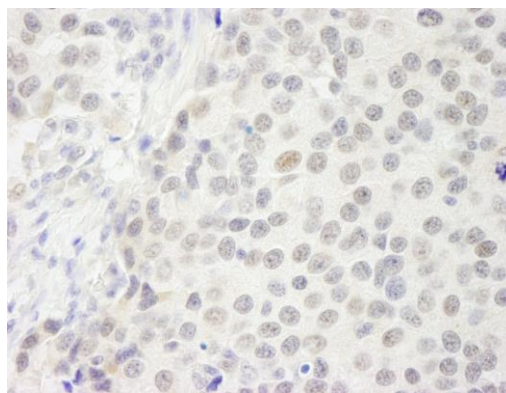
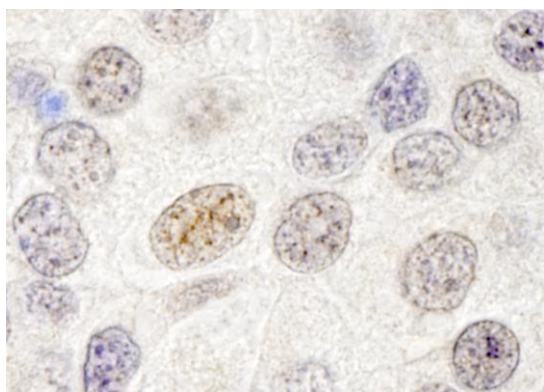


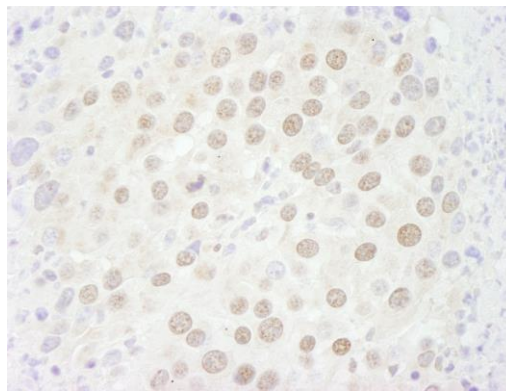
**Detection of human p66beta/GATAD2B by immunohistochemistry.** *Sample:* FFPE section of human small cell lung cancer. *Antibody:* Affinity purified rabbit anti-p66beta/GATAD2B (Cat. No. IHC-00377) used at a dilution of 1:250. *Detection:* DAB



**Detection of human p66beta/GATAD2B by immunohistochemistry.** *Sample:* FFPE section of human breast carcinoma. *Antibody:* Affinity purified rabbit anti-p66beta/GATAD2B (Cat. No. IHC-00377) used at a dilution of 1:250. *Detection:* DAB



**Detection of human p66beta/GATAD2B by immunohistochemistry.** *Sample:* FFPE section of human breast carcinoma. *Antibody:* Affinity purified rabbit anti-p66beta/GATAD2B (Cat. No. IHC-00377) used at a dilution of 1:250. *Detection:* DAB



**Detection of mouse p66beta/GATAD2B by immunohistochemistry.** *Sample:* FFPE section of mouse renal cell carcinoma. *Antibody:* Affinity purified rabbit anti-p66beta/GATAD2B (Cat. No. IHC-00377) used at a dilution of 1:250. *Detection:* DAB