

CEP290 IHC Antibody

Rabbit Polyclonal

Antigen Affinity Purified

Protein ID NP_079390.3

Catalog No. IHC-00365

GeneID 80184

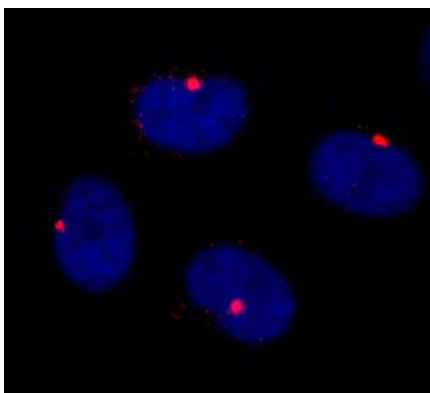
Lot No. IHC-00365-2



APPLICATIONS	ICC-IF
SPECIES REACTIVITY	Human
PRESUMED REACTIVITY	Based on 100% sequence identity, this antibody is predicted to react with Horse, Orangutan, Monkey, Gorilla, Northern white-cheeked gibbon, Small-eared galago and African elephant
AMOUNT	100 µl
CONCENTRATION	500 µg/ml
STORAGE/SHELF LIFE	2 – 8° C / 1 year from date of receipt
PHYSICAL STATE	Liquid
BUFFER	Tris-buffered Saline containing 0.1% BSA and 0.09% Sodium Azide
ISOTYPE	IgG
ORIGIN	USA
PRODUCTION PROCEDURES	<p>Antibody was affinity purified using an epitope specific to CEP290 immobilized on solid support.</p> <p>The epitope recognized by IHC-00365 maps to a region between residue 2429 and 2479 of human centrosomal protein 290kDa using the numbering given in entry NP_079390.3 (GeneID 80184).</p> <p>Antibody concentration was determined by extinction coefficient: absorbance at 280 nm of 1.4 equals 1.0 mg of IgG.</p>
APPLICATIONS	<p>Centrifuge tube to remove product from lid. Optimal working dilutions should be determined experimentally by the investigator. Prepare working dilution immediately before use.</p> <p>Immunofluorescence 1:100 – 1:500 (ICC)</p>
APPLICATION NOTES	<p>Formaldehyde-Fixed Cells 1:100 – 1:500: Permeabilization with Triton-X 100 is recommended.</p> <p>Acetone fixation is not recommended.</p>
IHC HUMAN CONTROLS	HeLa Cells
ADDITIONAL INFO	<p>https://www.bethyl.com/product/IHC-00365</p> <p>Use the link above to view SDS, a current list of citations, and other product specific information.</p>

This document certifies that this product has met all of the quality control standards defined by Bethyl Laboratories, Inc.
Eric McIntush, PhD | Chief Scientific Officer

Date: June 21, 2019

**Detection of human CEP290 by immunocytochemistry.**

Sample: NBF-fixed asynchronous HeLa cells. *Antibody:*

Affinity purified rabbit anti-CEP290 (Cat. No.

IHC-00365-2) used at a dilution of 1:250. *Detection:* Red-

fluorescent goat anti-rabbit IgG cross-adsorbed Antibody

DyLight 594 used at a dilution of 1:100.