

CEP131/AZ1 IHC Antibody

Rabbit Polyclonal

Antigen Affinity Purified

Protein ID EAW89632.1

Catalog No. IHC-00363

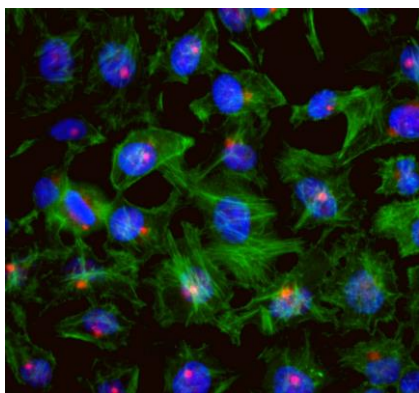
GeneID 22994

Lot No. IHC-00363-1

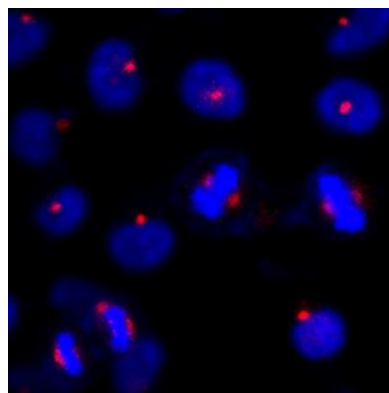


APPLICATIONS	ICC-IF
SPECIES REACTIVITY	Human
PRESUMED REACTIVITY	Based on 100% sequence identity, this antibody is predicted to react with Orangutan, Gorilla, Chimpanzee and Northern white-cheeked gibbon
AMOUNT	100 µl
CONCENTRATION	250 µg/ml
STORAGE/SHELF LIFE	2 – 8° C / 1 year from date of receipt
PHYSICAL STATE	Liquid
BUFFER	Tris-buffered Saline containing 0.1% BSA and 0.09% Sodium Azide
ISOTYPE	IgG
ORIGIN	USA
PRODUCTION PROCEDURES	<p>Antibody was affinity purified using an epitope specific to CEP131/AZ1 immobilized on solid support.</p> <p>The epitope recognized by IHC-00363 maps to a region between residue 1033 and 1083 of human centrosomal protein 131 kDa (5-azacytidine induced 1) using the numbering given in entry EAW89632.1 (GeneID 22994).</p> <p>Antibody concentration was determined by extinction coefficient: absorbance at 280 nm of 1.4 equals 1.0 mg of IgG.</p>
APPLICATIONS	<p>Centrifuge tube to remove product from lid. Optimal working dilutions should be determined experimentally by the investigator. Prepare working dilution immediately before use.</p> <p>Immunofluorescence 1:100 – 1:500 (ICC)</p>
APPLICATION NOTES	<p>Formaldehyde-Fixed Cells 1:100 – 1:500: Permeabilization with Triton-X 100 is recommended.</p> <p>Acetone-Fixed Cells 1:100 – 1:500:</p>
IHC HUMAN CONTROLS	HeLa Cells
ADDITIONAL INFO	<p>https://www.bethyl.com/product/IHC-00363</p> <p>Use the link above to view SDS, a current list of citations, and other product specific information.</p>

This document certifies that this product has met all of the quality control standards defined by Bethyl Laboratories, Inc.
Eric McIntush, PhD | Chief Scientific Officer Date: June 21, 2019



Detection of human CEP131/AZ1 by immunocytochemistry. *Sample:* NBF-fixed asynchronous HeLa cells. *Antibody:* Affinity purified rabbit anti-CEP131/AZ1 (Cat. No. IHC-00363) used at a dilution of 1:250. *Detection:* Red-fluorescent goat anti-rabbit IgG highly cross-adsorbed Antibody Hilyte Plus™ 555 used at a dilution of 1:100.



Detection of human CEP131/AZ1 by immunocytochemistry. *Sample:* NBF-fixed asynchronous HeLa cells. *Antibody:* Affinity purified rabbit anti-CEP131/AZ1 (Cat. No. IHC-00363) used at a dilution of 1:250. *Detection:* Red-fluorescent goat anti-rabbit IgG highly cross-adsorbed Antibody used at a dilution of 1:100.