

KPNA4 IHC Antibody

Rabbit Polyclonal

Antigen Affinity Purified

Protein ID NP_002259.1

Catalog No. IHC-00321

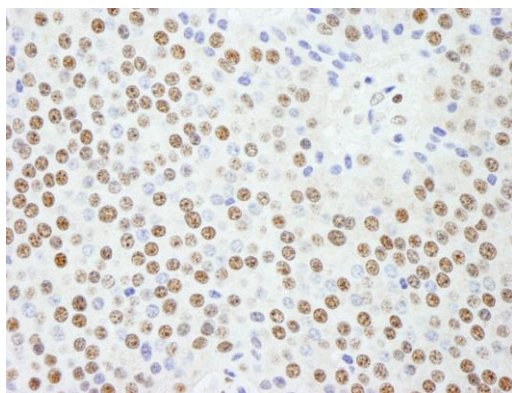
GeneID 3840

Lot No. IHC-00321-1

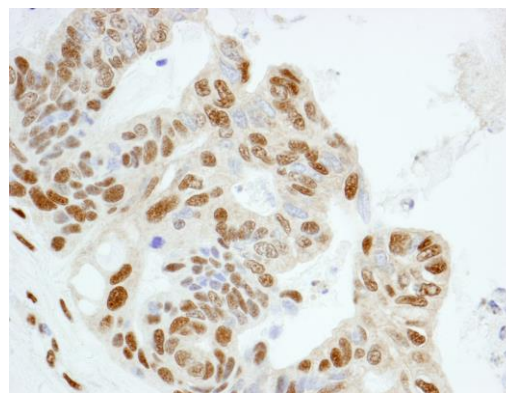


APPLICATIONS	IHC, IHC-IF
SPECIES REACTIVITY	Human, Mouse
PRESUMED REACTIVITY	Based on 100% sequence identity, this antibody is predicted to react with Bovine, Dog, Horse, Rabbit, Guinea pig_10141, Panda, Orangutan, Monkey, Gorilla, Chimpanzee and White-tufted-ear marmoset
AMOUNT	100 µl
CONCENTRATION	250 µg/ml
STORAGE/SHELF LIFE	2 – 8° C / 1 year from date of receipt
PHYSICAL STATE	Liquid
BUFFER	Tris-buffered Saline containing 0.1% BSA and 0.09% Sodium Azide
ISOTYPE	IgG
ORIGIN	USA
PRODUCTION PROCEDURES	<p>Antibody was affinity purified using an epitope specific to KPNA4 immobilized on solid support.</p> <p>The epitope recognized by IHC-00321 maps to a region between residue 471 and 521 of human karyopherin alpha 4 using the numbering given in entry NP_002259.1 (GeneID 3840).</p> <p>Antibody concentration was determined by extinction coefficient: absorbance at 280 nm of 1.4 equals 1.0 mg of IgG.</p>
APPLICATIONS	<p>Centrifuge tube to remove product from lid. Optimal working dilutions should be determined experimentally by the investigator. Prepare working dilution immediately before use.</p> <p>Immunohistochemistry 1:100 – 1:500</p> <p>Immunofluorescence 1:50 – 1:500 (IHC)</p>
APPLICATION NOTES	<p>Epitope exposure is recommended.</p> <p>Epitope exposure with citrate buffer will enhance staining.</p> <p>Likely to work with frozen sections.</p> <p>In some cases, the antibody may be diluted further than indicated.</p>
IHC HUMAN CONTROLS	Anaplastic Thyroid Carcinoma, Breast Carcinoma, Colon Carcinoma, Linitis Plastica Stomach Cancer, Ovarian Carcinoma, Pancreatic Islet Cell Tumor, Prostate Carcinoma, Stomach Adenocarcinoma, Testicular Seminoma
IHC MOUSE CONTROLS	Teratoma
ADDITIONAL INFO	<p>https://www.bethyl.com/product/IHC-00321</p> <p>Use the link above to view SDS, a current list of citations, and other product specific information.</p>

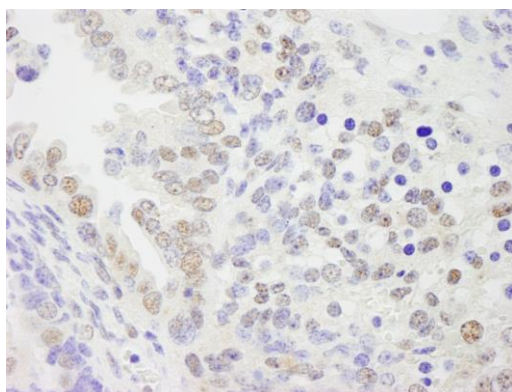
This document certifies that this product has met all of the quality control standards defined by Bethyl Laboratories, Inc.
Eric McIntush, PhD | Chief Scientific Officer Date: June 21, 2019



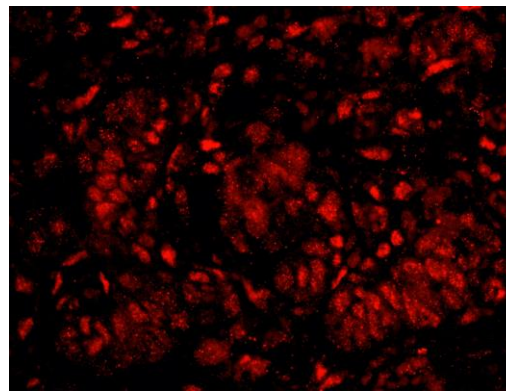
Detection of human KPNA4 by immunohistochemistry.
Sample: FFPE section of human pancreatic islet cell tumor. *Antibody:* Affinity purified rabbit anti-KPNA4 (Cat. No. IHC-00321) used at a dilution of 1:250. *Detection:* DAB



Detection of human KPNA4 by immunohistochemistry.
Sample: FFPE section of human ovarian tumor. *Antibody:* Affinity purified rabbit anti-KPNA4 (Cat. No. IHC-00321) used at a dilution of 1:250. *Detection:* DAB



Detection of mouse KPNA4 by immunohistochemistry.
Sample: FFPE section of mouse teratoma. *Antibody:* Affinity purified rabbit anti-KPNA4 (Cat. No. IHC-00321) used at a dilution of 1:250. *Detection:* DAB



Detection of human KPNA4 by IHC-IF. *Sample:* FFPE section of human ovarian tumor. *Antibody:* Affinity purified rabbit anti-KPNA4 (Cat. No. IHC-00321) used at a dilution of 1:100. *Detection:* Red-fluorescent goat anti-rabbit IgG highly cross-adsorbed Antibody used at a dilution of 1:100.