

SF3b145/SAP145 IHC Antibody

Rabbit Polyclonal

Antigen Affinity Purified

Protein ID AAA97461.1

Catalog No. IHC-00317

GeneID 10992

Lot No. IHC-00317-1



APPLICATIONS	IHC, IHC-IF
SPECIES REACTIVITY	Human, Mouse
PRESUMED REACTIVITY	Based on 100% sequence identity, this antibody is predicted to react with Rat, Bovine, Dog, Horse, Rabbit, Pig, Panda, Monkey, Gorilla, Chimpanzee, White-tufted-ear marmoset and Crab-eating macaque
AMOUNT	100 µl
CONCENTRATION	250 µg/ml
STORAGE/SHELF LIFE	2 – 8° C / 1 year from date of receipt
PHYSICAL STATE	Liquid
BUFFER	Tris-buffered Saline containing 0.1% BSA and 0.09% Sodium Azide
ISOTYPE	IgG
ORIGIN	USA
PRODUCTION PROCEDURES	Antibody was affinity purified using an epitope specific to SF3b145/SAP145 immobilized on solid support.

The epitope recognized by IHC-00317 maps to a region between residue 775 and 825 of human splicing factor 3b, subunit 2, 145kDa (spliceosome associated protein 145) using the numbering given in entry AAA97461.1 (GeneID 10992).

Antibody concentration was determined by extinction coefficient: absorbance at 280 nm of 1.4 equals 1.0 mg of IgG.

APPLICATIONS Centrifuge tube to remove product from lid. Optimal working dilutions should be determined experimentally by the investigator. Prepare working dilution immediately before use.

Immunohistochemistry 1:100 – 1:500

Immunofluorescence 1:50 – 1:500
(IHC)

APPLICATION NOTES Epitope exposure is recommended.

Epitope exposure with citrate buffer will enhance staining.

Likely to work with frozen sections.

In some cases, the antibody may be diluted further than indicated.

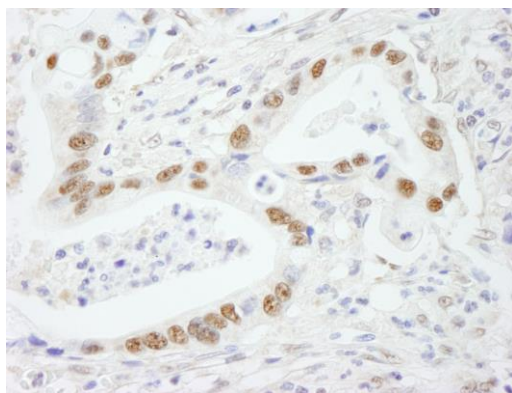
IHC HUMAN CONTROLS Anaplastic Thyroid Carcinoma, Breast Carcinoma, Colon Carcinoma, Ovarian Carcinoma, Prostate Carcinoma, Stomach Adenocarcinoma, Testicular Seminoma

IHC MOUSE CONTROLS Teratoma

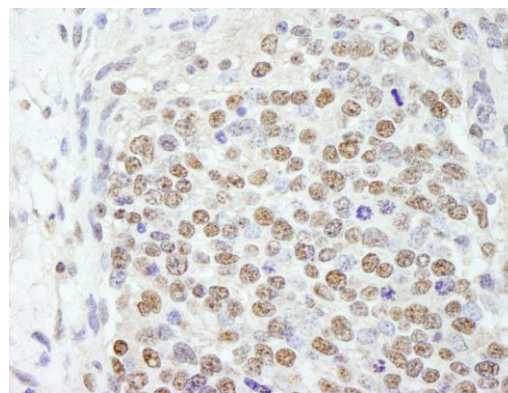
ADDITIONAL INFO <https://www.bethyl.com/product/IHC-00317>

Use the link above to view SDS, a current list of citations, and other product specific information.

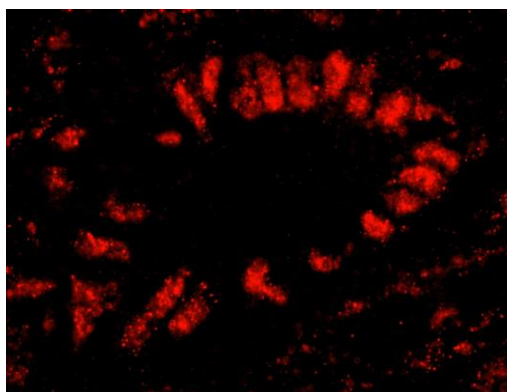
This document certifies that this product has met all of the quality control standards defined by Bethyl Laboratories, Inc.
Eric McIntush, PhD | Chief Scientific Officer Date: June 21, 2019



Detection of human SF3b145/SAP145 by immunohistochemistry. *Sample:* FFPE section of human stomach carcinoma. *Antibody:* Affinity purified rabbit anti-SF3b145/SAP145 (Cat. No. IHC-00317) used at a dilution of 1:250. *Detection:* DAB



Detection of mouse SF3b145/SAP145 by immunohistochemistry. *Sample:* FFPE section of mouse teratoma. *Antibody:* Affinity purified rabbit anti-SF3b145/SAP145 (Cat. No. IHC-00317) used at a dilution of 1:250. *Detection:* DAB



Detection of human SF3b145/SAP145 by IHC-IF. *Sample:* FFPE section of human stomach carcinoma. *Antibody:* Affinity purified rabbit anti-SF3b145/SAP145 (Cat. No. IHC-00317) used at a dilution of 1:100. *Detection:* Red-fluorescent goat anti-rabbit IgG highly cross-adsorbed Antibody used at a dilution of 1:100.