

USP5/IsoT IHC Antibody

Rabbit Polyclonal

Antigen Affinity Purified

Protein ID CAA62690.1

Catalog No. IHC-00313

GeneID 8078

Lot No. IHC-00313-1



APPLICATIONS	IHC, IHC-IF
SPECIES REACTIVITY	Human
PRESUMED REACTIVITY	Based on 100% sequence identity, this antibody is predicted to react with Orangutan, Monkey, Gorilla, Chimpanzee, Northern white-cheeked gibbon, Crab-eating macaque and White-tufted-ear marmoset
AMOUNT	100 µl
CONCENTRATION	100 µg/ml
STORAGE/SHELF LIFE	2 – 8° C / 1 year from date of receipt
PHYSICAL STATE	Liquid
BUFFER	Tris-buffered Saline containing 0.1% BSA and 0.09% Sodium Azide
ISOTYPE	IgG
ORIGIN	USA
PRODUCTION PROCEDURES	Antibody was affinity purified using an epitope specific to USP5/IsoT immobilized on solid support.

The epitope recognized by IHC-00313 maps to a region between residue 375 and 425 of human ubiquitin specific peptidase 5 (isopeptidase T) using the numbering given in entry CAA62690.1 (GeneID 8078).

Antibody concentration was determined by extinction coefficient: absorbance at 280 nm of 1.4 equals 1.0 mg of IgG.

APPLICATIONS Centrifuge tube to remove product from lid. Optimal working dilutions should be determined experimentally by the investigator. Prepare working dilution immediately before use.

Immunohistochemistry 1:100 – 1:500

Immunofluorescence 1:50 – 1:500
(IHC)

APPLICATION NOTES Epitope exposure is recommended.

Epitope exposure with citrate buffer will enhance staining.

Likely to work with frozen sections.

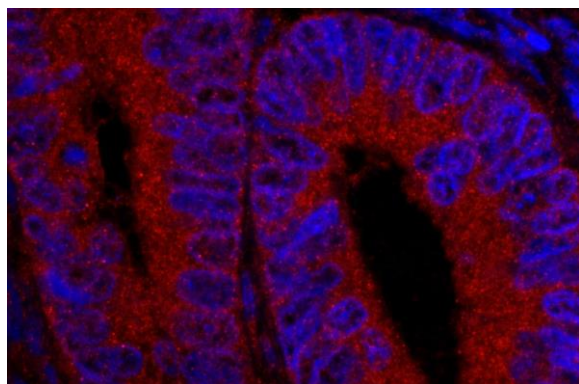
In some cases, the antibody may be diluted further than indicated.

IHC HUMAN CONTROLS Breast Carcinoma, Colon Carcinoma, Linitis Plastica Stomach Cancer, Non-Small Cell Lung Cancer, Ovarian Carcinoma, Pancreatic Islet Cell Tumor, Prostate Carcinoma, Skin Basal Cell Carcinoma, Stomach Adenocarcinoma, Testicular Seminoma

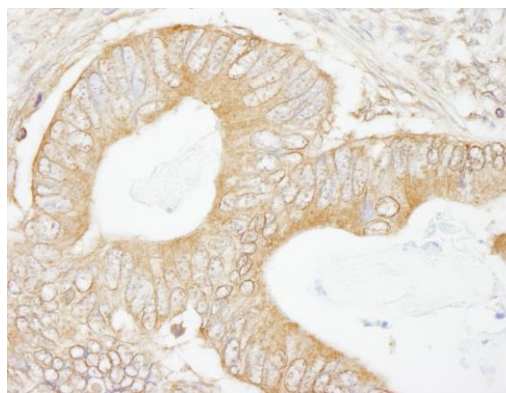
ADDITIONAL INFO <https://www.bethyl.com/product/IHC-00313>

Use the link above to view SDS, a current list of citations, and other product specific information.

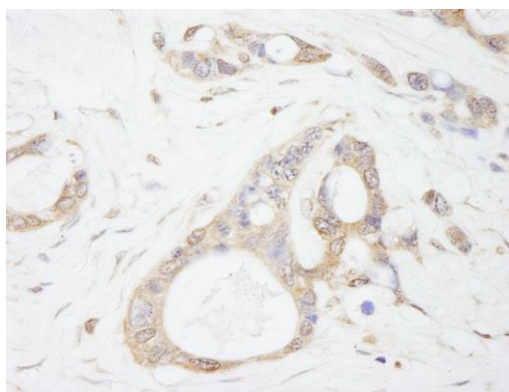
This document certifies that this product has met all of the quality control standards defined by Bethyl Laboratories, Inc.
Eric McIntush, PhD | Chief Scientific Officer Date: June 21, 2019



Detection of human USP5/IsoT by IHC-IF. *Sample:* FFPE section of human colon carcinoma. *Antibody:* Affinity purified rabbit anti-USP5/IsoT (Cat. No. IHC-00313) used at a dilution of 1:100. *Detection:* Red-fluorescent goat anti-rabbit IgG highly cross-adsorbed Antibody Hilyte Plus™ 555 used at a dilution of 1:100.



Detection of human USP5/IsoT by immunohistochemistry. *Sample:* FFPE section of human colon carcinoma. *Antibody:* Affinity purified rabbit anti-USP5/IsoT (Cat. No. IHC-00313) used at a dilution of 1:100. *Detection:* DAB



Detection of human USP5/IsoT by immunohistochemistry. *Sample:* FFPE section of human ovarian carcinoma. *Antibody:* Affinity purified rabbit anti-USP5/IsoT (Cat. No. IHC-00313) used at a dilution of 1:500. *Detection:* DAB