

RCOR3 IHC Antibody

Rabbit Polyclonal

Antigen Affinity Purified

Protein ID NP_060724.1

Catalog No. IHC-00308

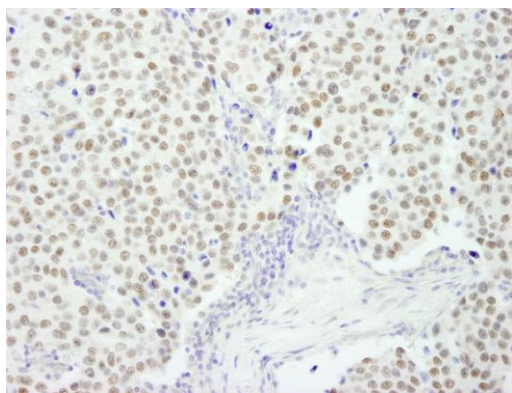
GeneID 55758

Lot No. IHC-00308-1



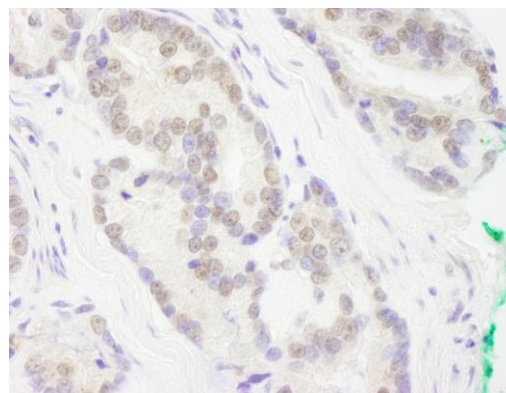
APPLICATIONS	IHC, IHC-IF, ICC-IF
SPECIES REACTIVITY	Human
PRESUMED REACTIVITY	Based on 100% sequence identity, this antibody is predicted to react with Mouse, Bovine, Dog, Horse, Guinea pig_10141, Panda, Orangutan, Monkey, Gorilla, Chimpanzee and Naked mole rat
AMOUNT	100 µl
CONCENTRATION	250 µg/ml
STORAGE/SHELF LIFE	2 – 8° C / 1 year from date of receipt
PHYSICAL STATE	Liquid
BUFFER	Tris-buffered Saline containing 0.1% BSA and 0.09% Sodium Azide
ISOTYPE	IgG
ORIGIN	USA
PRODUCTION PROCEDURES	<p>Antibody was affinity purified using an epitope specific to RCOR3 immobilized on solid support.</p> <p>The epitope recognized by IHC-00308 maps to a region between residue 445 and 495 of human REST corepressor 3 using the numbering given in entry NP_060724.1 (GeneID 55758).</p> <p>Antibody concentration was determined by extinction coefficient: absorbance at 280 nm of 1.4 equals 1.0 mg of IgG.</p>
APPLICATIONS	<p>Centrifuge tube to remove product from lid. Optimal working dilutions should be determined experimentally by the investigator. Prepare working dilution immediately before use.</p> <p>Immunohistochemistry 1:100 – 1:500</p> <p>Immunofluorescence (IHC) 1:50 – 1:500</p> <p>Immunofluorescence (ICC) 1:50 – 1:500</p>
APPLICATION NOTES	<p>Epitope exposure is recommended.</p> <p>Epitope exposure with citrate buffer will enhance staining.</p> <p>Likely to work with frozen sections.</p> <p>In some cases, the antibody may be diluted further than indicated.</p>
IHC HUMAN CONTROLS	Anaplastic Thyroid Carcinoma, Breast Carcinoma, Ovarian Carcinoma, Prostate Carcinoma, HeLa Cells
ADDITIONAL INFO	<p>https://www.bethyl.com/product/IHC-00308</p> <p>Use the link above to view SDS, a current list of citations, and other product specific information.</p>

This document certifies that this product has met all of the quality control standards defined by Bethyl Laboratories, Inc.
Eric McIntush, PhD | Chief Scientific Officer Date: June 21, 2019

**Detection of human RCOR3 by immunohistochemistry.**

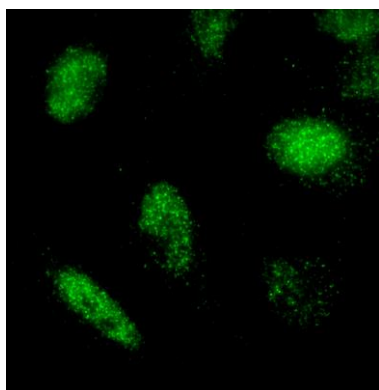
Sample: FFPE section of human breast carcinoma.

Antibody: Affinity purified rabbit anti-RCOR3 (Cat. No. IHC-00308) used at a dilution of 1:250. *Detection:* DAB

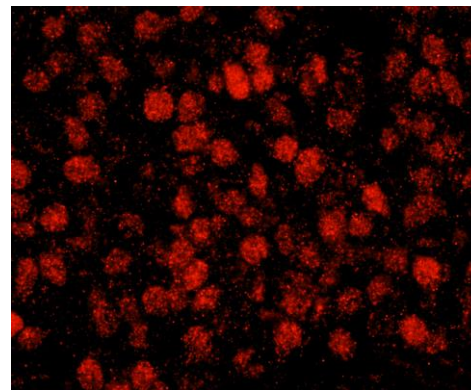
**Detection of human RCOR3 by immunohistochemistry.**

Sample: FFPE section of human prostate carcinoma.

Antibody: Affinity purified rabbit anti-RCOR3 (Cat. No. IHC-00308) used at a dilution of 1:250. *Detection:* DAB

**Detection of human RCOR3 by immunocytochemistry.**

Sample: NBF-fixed HeLa Cells. *Antibody:* Affinity purified rabbit anti-RCOR3 (Cat. No. IHC-00308) used at a dilution of 1:100. *Detection:* goat anti-rabbit IgG-heavy and light chain cross-adsorbed Antibody DyLight® 488 Conjugated used at a dilution of 1:100.

**Detection of human RCOR3 by immunohistochemistry.**

Sample: FFPE section of human breast carcinoma.

Antibody: Affinity purified rabbit anti-RCOR3 (Cat. No. IHC-00308) used at a dilution of 1:100. *Detection:* Red-fluorescent goat anti-rabbit IgG highly cross-adsorbed Antibody used at a dilution of 1:100.