

NUMA IHC Antibody

Rabbit Polyclonal

Antigen Affinity Purified

Protein ID NP_006176.2

Catalog No. IHC-00302

GeneID 4926

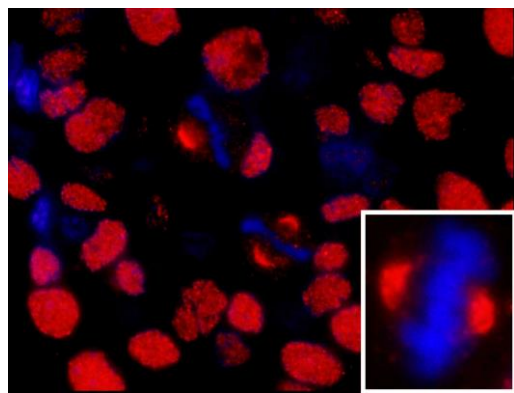
Lot No. IHC-00302-1



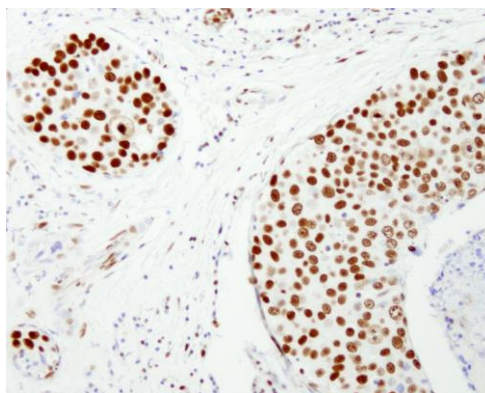
APPLICATIONS	IHC, IHC-IF
SPECIES REACTIVITY	Human
PRESUMED REACTIVITY	Based on 100% sequence identity, this antibody is predicted to react with Gorilla, Chimpanzee and Northern white-cheeked gibbon
AMOUNT	100 µl
CONCENTRATION	50 µg/ml
STORAGE/SHELF LIFE	2 – 8° C / 1 year from date of receipt
PHYSICAL STATE	Liquid
BUFFER	Tris-buffered Saline containing 0.1% BSA and 0.09% Sodium Azide
ISOTYPE	IgG
ORIGIN	USA
PRODUCTION PROCEDURES	<p>Antibody was affinity purified using an epitope specific to NUMA immobilized on solid support.</p> <p>The epitope recognized by IHC-00302 maps to a region between residue 900 and 950 of human nuclear mitotic apparatus protein 1 using the numbering given in entry NP_006176.2 (GeneID 4926).</p> <p>Antibody concentration was determined by extinction coefficient: absorbance at 280 nm of 1.4 equals 1.0 mg of IgG.</p>
APPLICATIONS	<p>Centrifuge tube to remove product from lid. Optimal working dilutions should be determined experimentally by the investigator. Prepare working dilution immediately before use.</p> <p>Immunohistochemistry 1:100 – 1:500</p> <p>Immunofluorescence 1:50 – 1:500 (IHC)</p>
APPLICATION NOTES	<p>Epitope exposure is recommended.</p> <p>Epitope exposure with citrate buffer will enhance staining.</p> <p>Likely to work with frozen sections.</p> <p>In some cases, the antibody may be diluted further than indicated.</p>
IHC HUMAN CONTROLS	Anaplastic Thyroid Carcinoma, Breast Carcinoma, Colon Carcinoma, Linitis Plastica Stomach Cancer, Ovarian Carcinoma, Pancreatic Islet Cell Tumor, Prostate Carcinoma, Skin Basal Cell Carcinoma, Skin Melanoma, Stomach Adenocarcinoma, Testicular Seminoma
ADDITIONAL INFO	<p>https://www.bethyl.com/product/IHC-00302</p> <p>Use the link above to view SDS, a current list of citations, and other product specific information.</p>

This document certifies that this product has met all of the quality control standards defined by Bethyl Laboratories, Inc.
Eric McIntush, PhD | Chief Scientific Officer

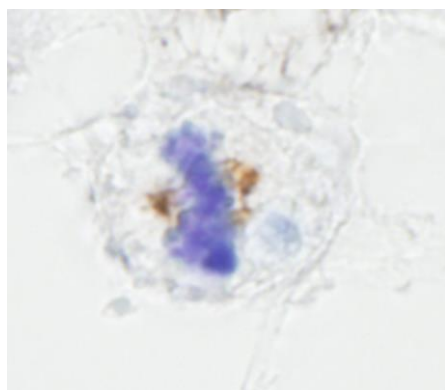
Date: June 21, 2019



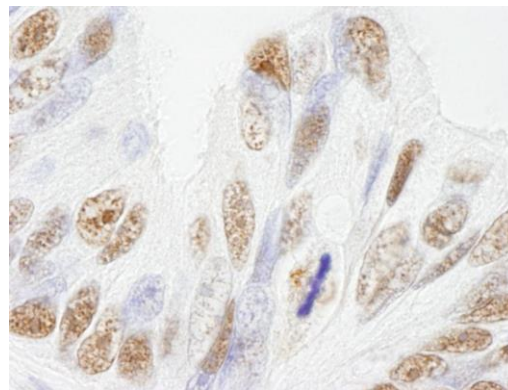
Detection of human NUMA by immunohistochemistry.
Sample: FFPE section of human breast carcinoma.
Antibody: Affinity purified rabbit anti-NUMA (Cat. No. IHC-00302) used at a dilution of 1:100. *Detection:* Red-fluorescent goat anti-rabbit IgG highly cross-adsorbed Antibody Hilyte Plus™ 555 used at a dilution of 1:100.



Detection of human NUMA by immunohistochemistry.
Sample: FFPE section of human breast carcinoma.
Antibody: Affinity purified rabbit anti-NUMA (Cat. No. IHC-00302) used at a dilution of 1:250. *Detection:* DAB



Detection of human NUMA by immunohistochemistry.
Sample: FFPE section of human seminoma. *Antibody:* Affinity purified rabbit anti-NUMA (Cat. No. IHC-00302) used at a dilution of 1:250. *Detection:* DAB



Detection of human NUMA by immunohistochemistry.
Sample: FFPE section of human ovarian tumor. *Antibody:* Affinity purified rabbit anti-NUMA (Cat. No. IHC-00302) used at a dilution of 1:250. *Detection:* DAB