

FIP1 IHC Antibody

Rabbit Polyclonal

Antigen Affinity Purified

Protein ID NP_112179.2

Catalog No. IHC-00293

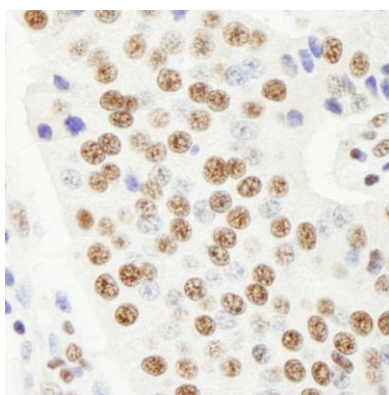
GeneID 81608

Lot No. IHC-00293-1



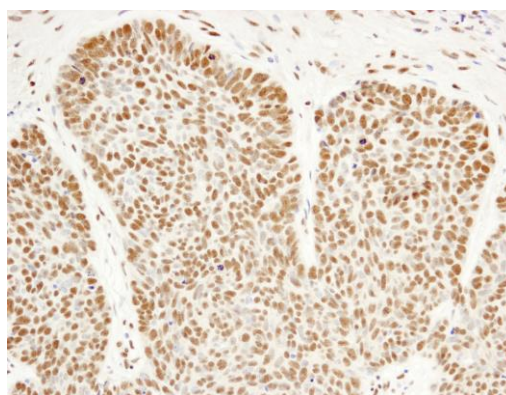
APPLICATIONS	IHC, IHC-IF
SPECIES REACTIVITY	Human
PRESUMED REACTIVITY	Based on 100% sequence identity, this antibody is predicted to react with Bovine, Horse, Pig, Orangutan, Monkey, Gorilla, Chimpanzee, Northern white-cheeked gibbon and White-tufted-ear marmoset
AMOUNT	100 µl
CONCENTRATION	100 µg/ml
STORAGE/SHELF LIFE	2 – 8° C / 1 year from date of receipt
PHYSICAL STATE	Liquid
BUFFER	Tris-buffered Saline containing 0.1% BSA and 0.09% Sodium Azide
ISOTYPE	IgG
ORIGIN	USA
PRODUCTION PROCEDURES	<p>Antibody was affinity purified using an epitope specific to FIP1 immobilized on solid support.</p> <p>The epitope recognized by IHC-00293 maps to a region between residue 544 and 594 of human factor interacting with PAP using the numbering given in entry NP_112179.2 (GeneID 81608).</p> <p>Antibody concentration was determined by extinction coefficient: absorbance at 280 nm of 1.4 equals 1.0 mg of IgG.</p>
APPLICATIONS	<p>Centrifuge tube to remove product from lid. Optimal working dilutions should be determined experimentally by the investigator. Prepare working dilution immediately before use.</p> <p>Immunohistochemistry 1:100 – 1:500</p> <p>Immunofluorescence 1:50 – 1:500 (IHC)</p>
APPLICATION NOTES	<p>Epitope exposure is recommended.</p> <p>Epitope exposure with citrate buffer will enhance staining.</p> <p>Likely to work with frozen sections.</p> <p>In some cases, the antibody may be diluted further than indicated.</p>
IHC HUMAN CONTROLS	Anaplastic Thyroid Carcinoma, Bladder Cell Carcinoma, Breast Carcinoma, Colon Carcinoma, Hodgkins Lymphoma, Linitis Plastica Stomach Cancer, Ovarian Carcinoma, Pancreatic Islet Cell Tumor, Prostate Carcinoma, Skin Basal Cell Carcinoma, Skin Squamous Cell Carcinoma, Small Cell Lung Cancer, Stomach Adenocarcinoma
ADDITIONAL INFO	<p>https://www.bethyl.com/product/IHC-00293</p> <p>Use the link above to view SDS, a current list of citations, and other product specific information.</p>

This document certifies that this product has met all of the quality control standards defined by Bethyl Laboratories, Inc.
Eric McIntush, PhD | Chief Scientific Officer Date: June 21, 2019

**Detection of human FIP1 by immunohistochemistry.**

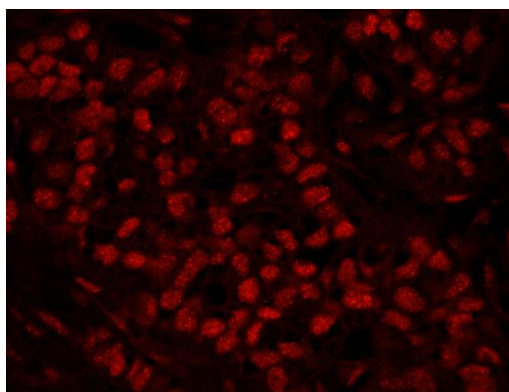
Sample: FFPE section of human pancreatic islet cell tumor.

Antibody: Affinity purified rabbit anti-FIP1 (Cat. No. IHC-00293) used at a dilution of 1:100. *Detection:* DAB

**Detection of human FIP1 by immunohistochemistry.**

Sample: FFPE section of human skin cancer. *Antibody:*

Affinity purified rabbit anti-FIP1 (Cat. No. IHC-00293) used at a dilution of 1:100. *Detection:* DAB

**Detection of human FIP1 by immunohistochemistry.**

Sample: FFPE section of human breast carcinoma.

Antibody: Affinity purified rabbit anti-FIP1 (Cat. No. IHC-00293) used at a dilution of 1:100. *Detection:* Red-fluorescent goat anti-rabbit IgG highly cross-adsorbed Antibody used at a dilution of 1:100.