

PHF6 IHC Antibody

Rabbit Polyclonal

Antigen Affinity Purified

Protein ID NP_115834.1

Catalog No. IHC-00292

GeneID 84295

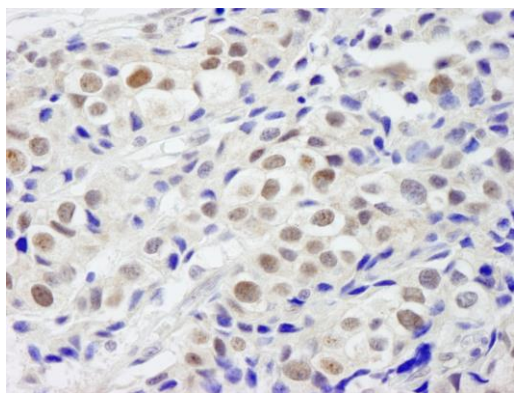
Lot No. IHC-00292-1



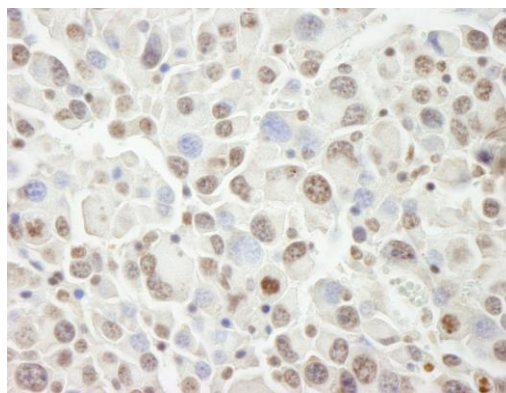
| | |
|------------------------------|--|
| APPLICATIONS | IHC, IHC-IF |
| SPECIES REACTIVITY | Human, Mouse |
| PRESUMED REACTIVITY | Based on 100% sequence identity, this antibody is predicted to react with Bovine, Dog, Horse, Rabbit, Pig, Panda, Orangutan, Monkey, Gorilla, Chimpanzee, Chinese hamster and Naked mole rat |
| AMOUNT | 100 µl |
| CONCENTRATION | 250 µg/ml |
| STORAGE/SHELF LIFE | 2 – 8° C / 1 year from date of receipt |
| PHYSICAL STATE | Liquid |
| BUFFER | Tris-buffered Saline containing 0.1% BSA and 0.09% Sodium Azide |
| ISOTYPE | IgG |
| ORIGIN | USA |
| PRODUCTION PROCEDURES | <p>Antibody was affinity purified using an epitope specific to PHF6 immobilized on solid support.</p> <p>The epitope recognized by IHC-00292 maps to a region between residue 125 and 175 of human PHD finger protein 6 using the numbering given in entry NP_115834.1 (GeneID 84295).</p> <p>Antibody concentration was determined by extinction coefficient: absorbance at 280 nm of 1.4 equals 1.0 mg of IgG.</p> |
| APPLICATIONS | <p>Centrifuge tube to remove product from lid. Optimal working dilutions should be determined experimentally by the investigator. Prepare working dilution immediately before use.</p> <p>Immunohistochemistry 1:100 – 1:500</p> <p>Immunofluorescence 1:50 – 1:500 (IHC)</p> |
| APPLICATION NOTES | <p>Epitope exposure is recommended.</p> <p>Epitope exposure with citrate buffer will enhance staining.</p> <p>Likely to work with frozen sections.</p> <p>In some cases, the antibody may be diluted further than indicated.</p> |
| IHC HUMAN CONTROLS | Anaplastic Thyroid Carcinoma, Breast Carcinoma, Hodgkins Lymphoma, Ovarian Carcinoma, Prostate Carcinoma |
| IHC MOUSE CONTROLS | Renal Cell Carcinoma |
| ADDITIONAL INFO | <p>https://www.bethyl.com/product/IHC-00292</p> <p>Use the link above to view SDS, a current list of citations, and other product specific information.</p> |

This document certifies that this product has met all of the quality control standards defined by Bethyl Laboratories, Inc.
Eric McIntush, PhD | Chief Scientific Officer

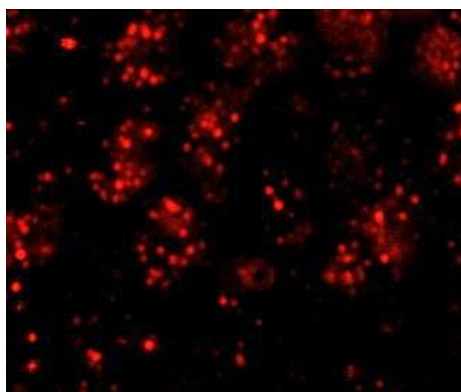
Date: June 21, 2019



Detection of human PHF6 by immunohistochemistry.
Sample: FFPE section of human breast carcinoma.
Antibody: Affinity purified rabbit anti-PHF6 (Cat. No. IHC-00292) used at a dilution of 1:250. *Detection:* DAB



Detection of mouse PHF6 by immunohistochemistry.
Sample: FFPE section of mouse renal cell carcinoma.
Antibody: Affinity purified rabbit anti-PHF6 (Cat. No. IHC-00292) used at a dilution of 1:250. *Detection:* DAB



Detection of human PHF6 by immunohistochemistry.
Sample: FFPE section of human skin carcinoma. *Antibody:* Affinity purified rabbit anti-PHF6 (Cat. No. IHC-00292) used at a dilution of 1:100. *Detection:* Red-fluorescent goat anti-rabbit IgG highly cross-adsorbed Antibody used at a dilution of 1:100.