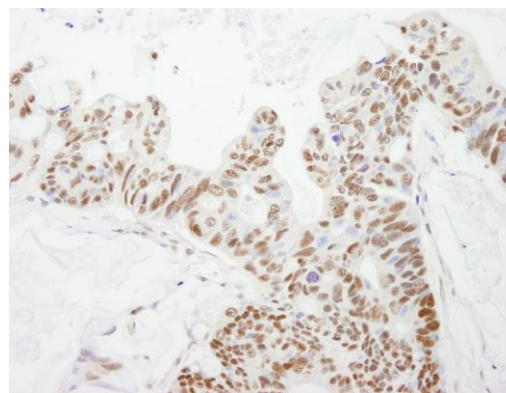
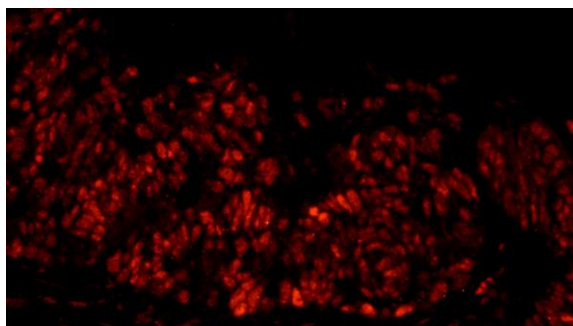


**Detection of human DFF45/DFFA by immunohistochemistry.** *Sample:* FFPE section of human breast carcinoma. *Antibody:* Affinity purified rabbit anti-DFF45/DFFA (Cat. No. IHC-00291) used at a dilution of 1:500. *Detection:* DAB



**Detection of human DFF45/DFFA by immunohistochemistry.** *Sample:* FFPE section of human ovarian carcinoma. *Antibody:* Affinity purified rabbit anti-DFF45/DFFA (Cat. No. IHC-00291) used at a dilution of 1:100. *Detection:* DAB



**Detection of human DFF45/DFFA by immunohistochemistry.** *Sample:* FFPE section of human ovarian carcinoma. *Antibody:* Affinity purified rabbit anti-DFF45/DFFA (Cat. No. IHC-00291) used at a dilution of 1:100. *Detection:* Red-fluorescent goat anti-rabbit IgG highly cross-adsorbed Antibody used at a dilution of 1:100.