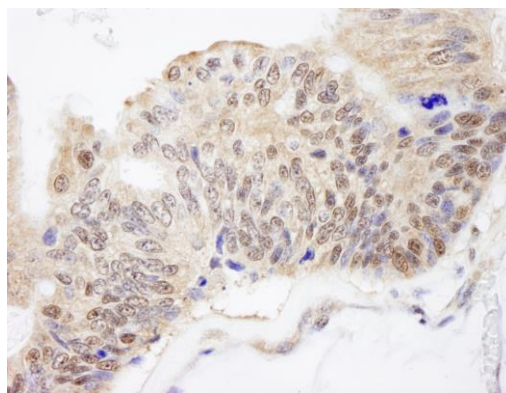
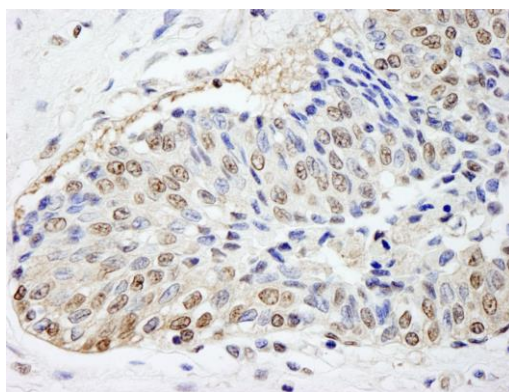


Detection of human FKBP4/FKBP52 by immunohistochemistry. *Sample:* FFPE section of human ovarian carcinoma. *Antibody:* Affinity purified rabbit anti-FKBP4/FKBP52 (Cat. No. IHC-00290) used at a dilution of 1:100. *Detection:* Red-fluorescent goat anti-rabbit IgG highly cross-adsorbed Antibody Hilyte Plus™ 555 used at a dilution of 1:100.



Detection of human FKBP4/FKBP52 by immunohistochemistry. *Sample:* FFPE section of human ovarian carcinoma. *Antibody:* Affinity purified rabbit anti-FKBP4/FKBP52 (Cat. No. IHC-00290) used at a dilution of 1:500. *Detection:* DAB



Detection of human FKBP4/FKBP52 by immunohistochemistry. *Sample:* FFPE section of human prostate carcinoma. *Antibody:* Affinity purified rabbit anti-FKBP4/FKBP52 (Cat. No. IHC-00290) used at a dilution of 1:500. *Detection:* DAB