

CTR9 IHC Antibody

Rabbit Polyclonal

Antigen Affinity Purified

Protein ID NP_055448.1

Catalog No. IHC-00288

GeneID 9646

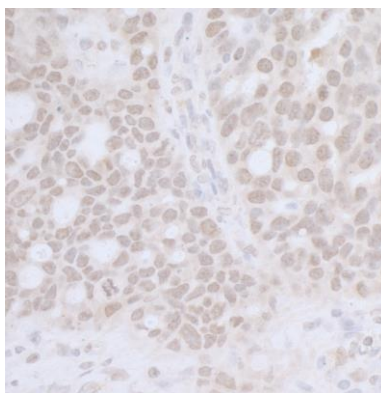
Lot No. IHC-00288-3



APPLICATIONS	IHC
SPECIES REACTIVITY	Human, Mouse
PRESUMED REACTIVITY	Based on 100% sequence identity, this antibody is predicted to react with Rat, Panda, Orangutan, Monkey, Gorilla, Chimpanzee, Northern white-cheeked gibbon and Little brown bat
AMOUNT	100 µl
CONCENTRATION	50 µg/ml
STORAGE/SHELF LIFE	2 – 8° C / 1 year from date of receipt
PHYSICAL STATE	Liquid
BUFFER	Tris-buffered Saline containing 0.1% BSA and 0.09% Sodium Azide
ISOTYPE	IgG
ORIGIN	USA
PRODUCTION PROCEDURES	<p>Antibody was affinity purified using an epitope specific to CTR9 immobilized on solid support.</p> <p>The epitope recognized by IHC-00288 maps to a region between residue 1123 and 1173 of human Paf1 /RNA polymerase II complex component homolog CTR9 using the numbering given in entry NP_055448.1 (GeneID 9646).</p> <p>Antibody concentration was determined by extinction coefficient: absorbance at 280 nm of 1.4 equals 1.0 mg of IgG.</p>
APPLICATIONS	<p>Centrifuge tube to remove product from lid. Optimal working dilutions should be determined experimentally by the investigator. Prepare working dilution immediately before use.</p> <p>Immunohistochemistry 1:100 – 1:500. Epitope retrieval with citrate buffer pH 6.0 is recommended for FFPE tissue sections.</p>
IHC HUMAN CONTROLS	Breast Carcinoma, Ovarian Carcinoma
IHC MOUSE CONTROLS	Colon Carcinoma CT26, Teratoma
ADDITIONAL INFO	<p>https://www.bethyl.com/product/IHC-00288</p> <p>Use the link above to view SDS, a current list of citations, and other product specific information.</p>

This document certifies that this product has met all of the quality control standards defined by Bethyl Laboratories, Inc.
Eric McIntush, PhD | Chief Scientific Officer

Date: June 21, 2019

**Detection of human CTR9 by immunohistochemistry.**

Sample: FFPE section of human ovarian carcinoma.

Antibody: Affinity purified rabbit anti-CTR9 (Cat. No. IHC-00288 Lot3) used at a dilution of 1:250. *Detection:* DAB