

CAD IHC Antibody

Rabbit Polyclonal

Antigen Affinity Purified

Protein ID NP_004332.2

Catalog No. IHC-00280

GeneID 790

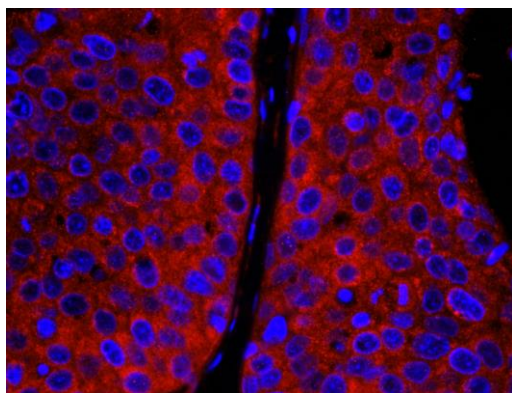
Lot No. IHC-00280-1



APPLICATIONS	IHC, IHC-IF
SPECIES REACTIVITY	Human
PRESUMED REACTIVITY	Based on 100% sequence identity, this antibody is predicted to react with Mouse, Rat, Dog, Rabbit, Guinea pig_10141, Pig, Orangutan, Monkey, Gorilla, Chimpanzee, Black rat and Gray short-tailed opossum
AMOUNT	100 µl
CONCENTRATION	250 µg/ml
STORAGE/SHELF LIFE	2 – 8° C / 1 year from date of receipt
PHYSICAL STATE	Liquid
BUFFER	Tris-buffered Saline containing 0.1% BSA and 0.09% Sodium Azide
ISOTYPE	IgG
ORIGIN	USA
PRODUCTION PROCEDURES	<p>Antibody was affinity purified using an epitope specific to CAD immobilized on solid support.</p> <p>The epitope recognized by IHC-00280 maps to a region between residue 1650 and 1700 of human carbamoyl-phosphate synthetase 2, aspartate transcarbamylase, and dihydroorotase using the numbering given in entry NP_004332.2 (GeneID 790).</p> <p>Antibody concentration was determined by extinction coefficient: absorbance at 280 nm of 1.4 equals 1.0 mg of IgG.</p>
APPLICATIONS	<p>Centrifuge tube to remove product from lid. Optimal working dilutions should be determined experimentally by the investigator. Prepare working dilution immediately before use.</p> <p>Immunohistochemistry 1:100 – 1:500</p> <p>Immunofluorescence 1:50 – 1:500 (IHC)</p>
APPLICATION NOTES	<p>Epitope exposure is recommended.</p> <p>Epitope exposure with citrate buffer will enhance staining.</p> <p>Likely to work with frozen sections.</p> <p>In some cases, the antibody may be diluted further than indicated.</p>
IHC HUMAN CONTROLS	Breast Carcinoma, Colon Carcinoma, Linitis Plastica Stomach Cancer, Ovarian Carcinoma, Stomach Adenocarcinoma, Testicular Seminoma
ADDITIONAL INFO	<p>https://www.bethyl.com/product/IHC-00280</p> <p>Use the link above to view SDS, a current list of citations, and other product specific information.</p>

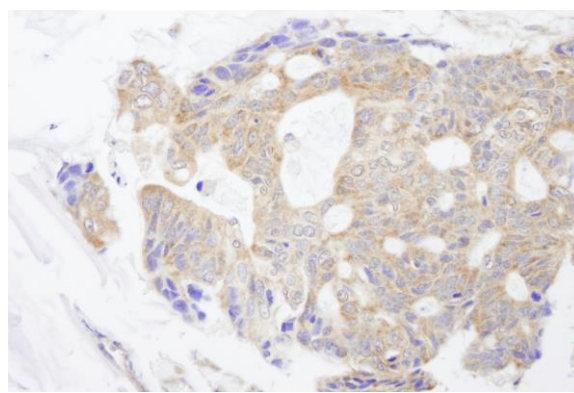
This document certifies that this product has met all of the quality control standards defined by Bethyl Laboratories, Inc.
Eric McIntush, PhD | Chief Scientific Officer

Date: June 21, 2019

**Detection of human CAD by immunohistochemistry.**

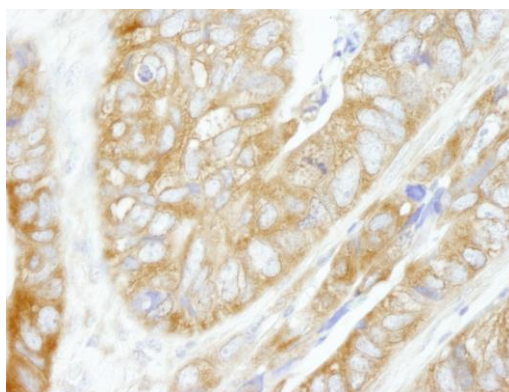
Sample: FFPE section of human breast carcinoma.

Antibody: Affinity purified rabbit anti-CAD (Cat. No. IHC-00280) used at a dilution of 1:100. *Detection:* Red-fluorescent goat anti-rabbit IgG highly cross-adsorbed IHC Antibody Hilyte Plus™ 555 used at a dilution of 1:100.

**Detection of human CAD by immunohistochemistry.**

Sample: FFPE section of human mucinous ovarian carcinoma.

Antibody: Affinity purified rabbit anti-CAD (Cat. No. IHC-00280) used at a dilution of 1:250. *Detection:* DAB

**Detection of human CAD by immunohistochemistry.**

Sample: FFPE section of human colon carcinoma. *Antibody:* Affinity purified rabbit anti-CAD (Cat. No. IHC-00280) used at a dilution of 1:250. *Detection:* DAB