

GTF2IRD/TFII-IRD1 IHC Antibody

Rabbit Polyclonal

Antigen Affinity Purified

Protein ID NP_057412.1

Catalog No. IHC-00274

GeneID 9569

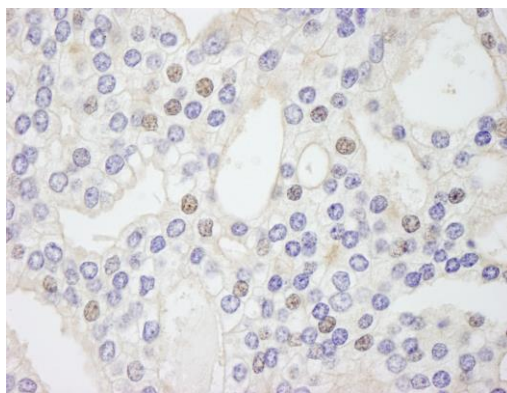
Lot No. IHC-00274-1



APPLICATIONS	IHC
SPECIES REACTIVITY	Human
PRESUMED REACTIVITY	Based on 100% sequence identity, this antibody is predicted to react with Bovine, Dog, Horse, Pig, Panda, Orangutan, Gorilla and Chimpanzee
AMOUNT	100 µl
CONCENTRATION	100 µg/ml
STORAGE/SHELF LIFE	2 – 8° C / 1 year from date of receipt
PHYSICAL STATE	Liquid
BUFFER	Tris-buffered Saline containing 0.1% BSA and 0.09% Sodium Azide
ISOTYPE	IgG
ORIGIN	USA
PRODUCTION PROCEDURES	<p>Antibody was affinity purified using an epitope specific to GTF2IRD/TFII-IRD1 immobilized on solid support.</p> <p>The epitope recognized by IHC-00274 maps to a region between residue 650 and 700 of human general transcription factor 2I repeat domain containing 1 using the numbering given in entry NP_057412.1 (GeneID 9569).</p> <p>Antibody concentration was determined by extinction coefficient: absorbance at 280 nm of 1.4 equals 1.0 mg of IgG.</p>
APPLICATIONS	<p>Centrifuge tube to remove product from lid. Optimal working dilutions should be determined experimentally by the investigator. Prepare working dilution immediately before use.</p> <p>Immunohistochemistry 1:100 – 1:500</p>
APPLICATION NOTES	<p>Epitope exposure is recommended.</p> <p>Epitope exposure with citrate buffer will enhance staining.</p> <p>Likely to work with frozen sections.</p>
IHC HUMAN CONTROLS	<p>In some cases, the antibody may be diluted further than indicated.</p> <p>Ovarian Carcinoma, Prostate Carcinoma, Stomach Adenocarcinoma</p>
ADDITIONAL INFO	<p>https://www.bethyl.com/product/IHC-00274</p> <p>Use the link above to view SDS, a current list of citations, and other product specific information.</p>

This document certifies that this product has met all of the quality control standards defined by Bethyl Laboratories, Inc.
Eric McIntush, PhD | Chief Scientific Officer

Date: June 21, 2019



Detection of human GTF2IRD/TFII-IRD1 by immunohistochemistry. *Sample:* FFPE section of human prostate carcinoma. *Antibody:* Affinity purified rabbit anti-GTF2IRD/TFII-IRD1 (Cat. No. IHC-00274) used at a dilution of 1:500. *Detection:* DAB