

# Coronin 2 IHC Antibody

Rabbit Polyclonal

Antigen Affinity Purified

Protein ID NP\_065174.1

Catalog No. IHC-00269

GeneID 57175

Lot No. IHC-00269-1



<b>APPLICATIONS</b>	IHC, IHC-IF
<b>SPECIES REACTIVITY</b>	Human
<b>PRESUMED REACTIVITY</b>	Based on 100% sequence identity, this antibody is predicted to react with Mouse, Orangutan, Monkey, Gorilla, Chimpanzee, Northern white-cheeked gibbon and thirteen-lined ground squirrel
<b>AMOUNT</b>	100 µl
<b>CONCENTRATION</b>	250 µg/ml
<b>STORAGE/SHELF LIFE</b>	2 - 8° C / 1 year from date of receipt
<b>PHYSICAL STATE</b>	Liquid
<b>BUFFER</b>	Tris-buffered Saline containing 0.1% BSA and 0.09% Sodium Azide
<b>ISOTYPE</b>	IgG
<b>ORIGIN</b>	USA
<b>PRODUCTION PROCEDURES</b>	Antibody was affinity purified using an epitope specific to Coronin 2 immobilized on solid support.

The epitope recognized by IHC-00269 maps to a region between residue 450 and 489 of human Coronin, actin binding protein, 1B using the numbering given in entry NP\_065174.1 (GeneID 57175).

Antibody concentration was determined by extinction coefficient: absorbance at 280 nm of 1.4 equals 1.0 mg of IgG.

**APPLICATIONS** Centrifuge tube to remove product from lid. Optimal working dilutions should be determined experimentally by the investigator. Prepare working dilution immediately before use.

Immunohistochemistry 1:100 - 1:500

Immunofluorescence 1:50 - 1:500 (IHC)

**APPLICATION NOTES** Epitope exposure is recommended.

Epitope exposure with citrate buffer will enhance staining.

Likely to work with frozen sections.

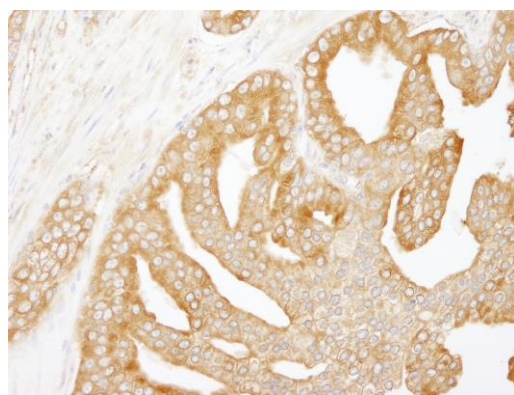
In some cases, the antibody may be diluted further than indicated.

**IHC HUMAN CONTROLS** Breast Carcinoma, Ovarian Carcinoma, Prostate Carcinoma, Skin Squamous Cell Carcinoma

**ADDITIONAL INFO** <https://www.bethyl.com/product/IHC-00269>

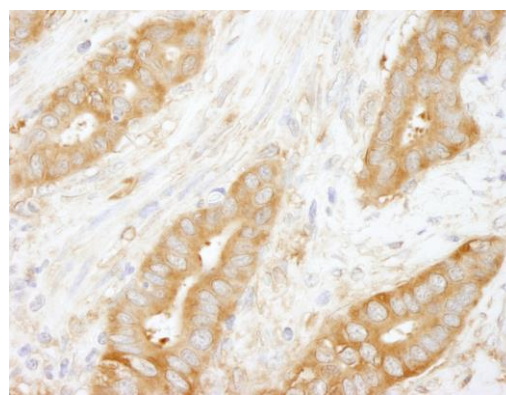
Use the link above to view SDS, a current list of citations, and other product specific information.

This document certifies that this product has met all of the quality control standards defined by Bethyl Laboratories, Inc.  
Eric McIntush, PhD | Chief Scientific Officer Date: June 21, 2019

**Detection of human Coronin 2 by immunohistochemistry.**

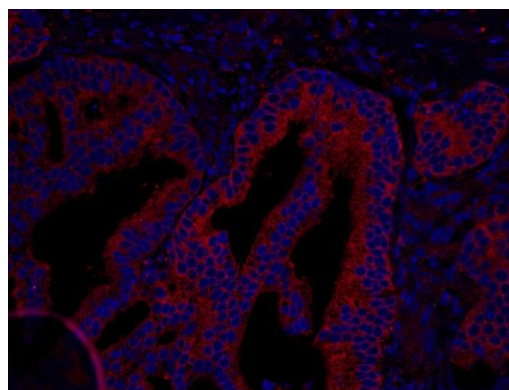
*Sample:* FFPE section of human prostate carcinoma.

*Antibody:* Affinity purified rabbit anti-Coronin 2 (Cat. No. IHC-00269) used at a dilution of 1:250. *Detection:* DAB

**Detection of human Coronin 2 by immunohistochemistry.**

*Sample:* FFPE section of human stomach carcinoma.

*Antibody:* Affinity purified rabbit anti-Coronin 2 (Cat. No. IHC-00269) used at a dilution of 1:250. *Detection:* DAB

**Detection of human Coronin 2 by immunohistochemistry.**

*Sample:* FFPE section of human prostate carcinoma.

*Antibody:* Affinity purified rabbit anti-Coronin 2 (Cat. No. IHC-00269) used at a dilution of 1:100. *Detection:* Red-fluorescent goat anti-rabbit IgG highly cross-adsorbed Antibody used at a dilution of 1:100.