

Pericentrin/Kendrin IHC Antibody

Rabbit Polyclonal

Antigen Affinity Purified

Protein ID NP_006022.3

Catalog No. IHC-00264

GeneID 5116

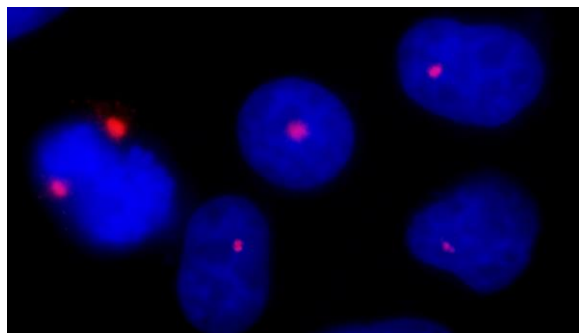
Lot No. IHC-00264-1



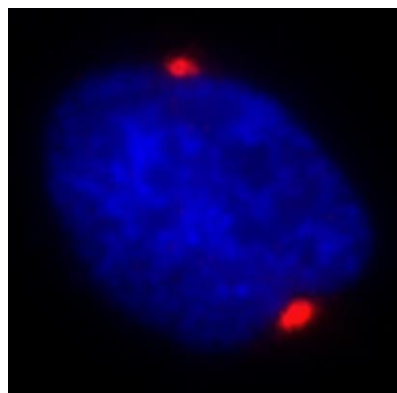
| | |
|-----------------------|--|
| APPLICATIONS | ICC-IF |
| SPECIES REACTIVITY | Human |
| AMOUNT | 100 µl |
| CONCENTRATION | 100 µg/ml |
| STORAGE/SHELF LIFE | 2 – 8° C / 1 year from date of receipt |
| PHYSICAL STATE | Liquid |
| BUFFER | Tris-buffered Saline containing 0.1% BSA and 0.09% Sodium Azide |
| ISOTYPE | IgG |
| ORIGIN | USA |
| PRODUCTION PROCEDURES | Antibody was affinity purified using an epitope specific to Pericentrin/Kendrin immobilized on solid support. The epitope recognized by IHC-00264 maps to a region between residue 175 and 225 of human Pericentrin/Kendrin using the numbering given in entry NP_006022.3 (GeneID 5116). Antibody concentration was determined by extinction coefficient: absorbance at 280 nm of 1.4 equals 1.0 mg of IgG. |
| APPLICATIONS | Centrifuge tube to remove product from lid. Optimal working dilutions should be determined experimentally by the investigator. Prepare working dilution immediately before use. Immunofluorescence 1:100 – 1:500 (ICC) |
| APPLICATION NOTES | Formaldehyde-Fixed Cells 1:100 – 1:500: Permeabilization with Triton-X 100 is recommended. Acetone-Fixed Cells: 1:100 – 1:500. |
| IHC HUMAN CONTROLS | HeLa Cells |
| ADDITIONAL INFO | https://www.bethyl.com/product/IHC-00264 Use the link above to view SDS, a current list of citations, and other product specific information. |

This document certifies that this product has met all of the quality control standards defined by Bethyl Laboratories, Inc.
Eric McIntush, PhD | Chief Scientific Officer

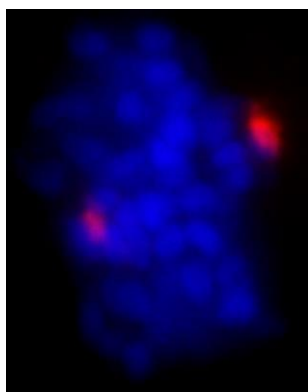
Date: June 21, 2019



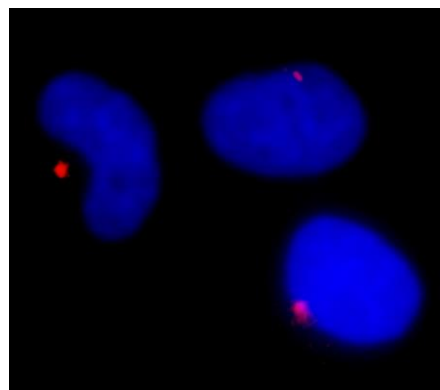
Detection of human Pericentrin/Kendrin by immunocytochemistry. *Sample:* NBF-fixed asynchronous HeLa cells. *Antibody:* Affinity purified rabbit anti-Pericentrin/Kendrin (Cat. No. IHC-00264) used at a dilution of 1:100. *Detection:* Red-fluorescent Alexa Fluor® 594 goat anti-rabbit IgG (Invitrogen).



Detection of human Pericentrin/Kendrin by immunocytochemistry. *Sample:* NBF-fixed asynchronous HeLa cells. *Antibody:* Affinity purified rabbit anti-Pericentrin/Kendrin (Cat. No. IHC-00264) used at a dilution of 1:500. *Detection:* Red-fluorescent Alexa Fluor® 594 goat anti-rabbit IgG (Invitrogen).



Detection of human Pericentrin/Kendrin by immunocytochemistry. *Sample:* NBF-fixed asynchronous HeLa cells. *Antibody:* Affinity purified rabbit anti-Pericentrin/Kendrin (Cat. No. IHC-00264) used at a dilution of 1:500. *Detection:* Red-fluorescent Alexa Fluor® 594 goat anti-rabbit IgG (Invitrogen).



Detection of human Pericentrin/Kendrin by immunocytochemistry. *Sample:* Acetone-fixed asynchronous HeLa cells. *Antibody:* Affinity purified rabbit anti-Pericentrin/Kendrin (Cat. No. IHC-00264) used at a dilution of 1:100. *Detection:* Red-fluorescent Alexa Fluor® 594 goat anti-rabbit IgG (Invitrogen).