

CHD3 IHC Antibody

Rabbit Polyclonal

Antigen Affinity Purified

Protein ID NP_001005273.1

Catalog No. IHC-00247

GeneID 1107

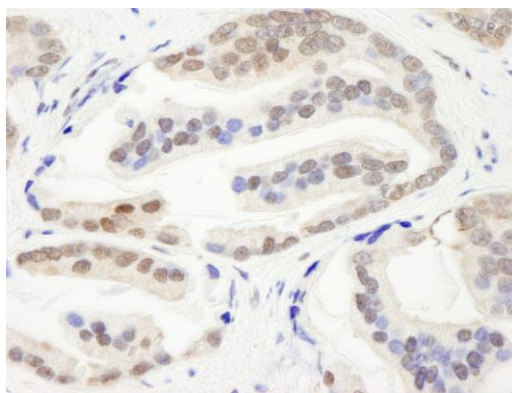
Lot No. IHC-00247-1



APPLICATIONS	IHC
SPECIES REACTIVITY	Human, Mouse
PRESUMED REACTIVITY	Based on 100% sequence identity, this antibody is predicted to react with Rat, Dog, Horse, Rabbit, Guinea pig_10141, Pig, Panda, Orangutan, Monkey, Gorilla, Chimpanzee and Chinese hamster
AMOUNT	100 µl
CONCENTRATION	250 µg/ml
STORAGE/SHELF LIFE	2 – 8° C / 1 year from date of receipt
PHYSICAL STATE	Liquid
BUFFER	Tris-buffered Saline containing 0.1% BSA and 0.09% Sodium Azide
ISOTYPE	IgG
ORIGIN	USA
PRODUCTION PROCEDURES	<p>Antibody was affinity purified using an epitope specific to CHD3 immobilized on solid support.</p> <p>The epitope recognized by IHC-00247 maps to a region between residue 1950 and 2000 of human chromodomain helicase DNA binding protein 3 using the numbering given in entry NP_001005273.1 (GeneID 1107).</p> <p>Antibody concentration was determined by extinction coefficient: absorbance at 280 nm of 1.4 equals 1.0 mg of IgG.</p>
APPLICATIONS	<p>Centrifuge tube to remove product from lid. Optimal working dilutions should be determined experimentally by the investigator. Prepare working dilution immediately before use.</p> <p>Immunohistochemistry 1:100 – 1:500</p>
APPLICATION NOTES	<p>Epitope exposure is recommended.</p> <p>Epitope exposure with citrate buffer will enhance staining.</p> <p>Likely to work with frozen sections.</p> <p>In some cases, the antibody may be diluted further than indicated.</p>
IHC HUMAN CONTROLS	Anaplastic Thyroid Carcinoma, Ewing Sarcoma, Non-Small Cell Lung Cancer, Ovarian Carcinoma, Pancreatic Islet Cell Tumor, Prostate Carcinoma, Skin Basal Cell Carcinoma, Skin Squamous Cell Carcinoma, Small Cell Lung Cancer
IHC MOUSE CONTROLS	Teratoma
ADDITIONAL INFO	<p>https://www.bethyl.com/product/IHC-00247</p> <p>Use the link above to view SDS, a current list of citations, and other product specific information.</p>

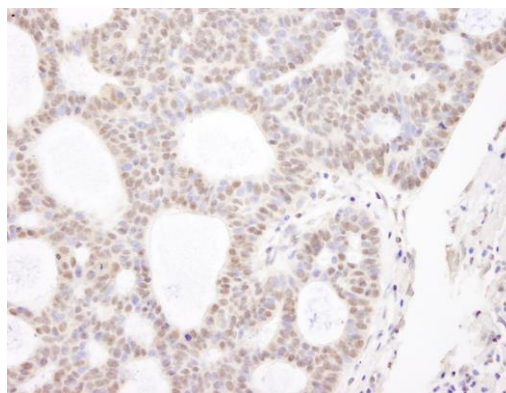
This document certifies that this product has met all of the quality control standards defined by Bethyl Laboratories, Inc.
Eric McIntush, PhD | Chief Scientific Officer

Date: June 21, 2019

**Detection of human CHD3 by immunohistochemistry.**

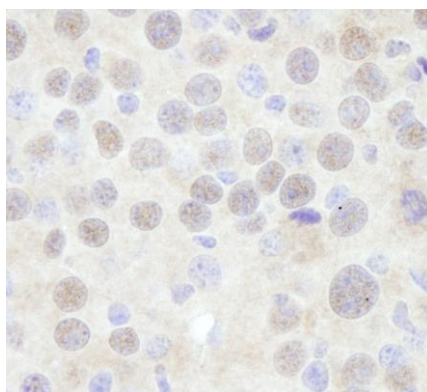
Sample: FFPE section of human prostate carcinoma.

Antibody: Affinity purified rabbit anti-CHD3 (Cat. No. IHC-00247) used at a dilution of 1:250. *Detection:* DAB

**Detection of human CHD3 by immunohistochemistry.**

Sample: FFPE section of human basal cell carcinoma.

Antibody: Affinity purified rabbit anti-CHD3 (Cat. No. IHC-00247) used at a dilution of 1:250. *Detection:* DAB

**Detection of mouse CHD3 by immunohistochemistry.**

Sample: FFPE section of mouse renal cell carcinoma.

Antibody: Affinity purified rabbit anti-CHD3 (Cat. No. IHC-00247) used at a dilution of 1:250. *Detection:* DAB