

# RbBP4 IHC Antibody

Rabbit Polyclonal

Antigen Affinity Purified

Protein ID CAA52321.1

Catalog No. IHC-00242

GeneID 5928

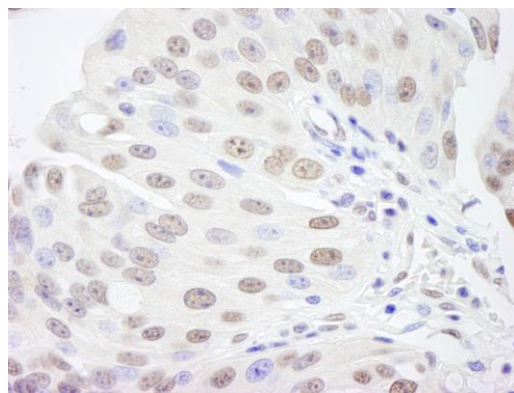
Lot No. IHC-00242-1



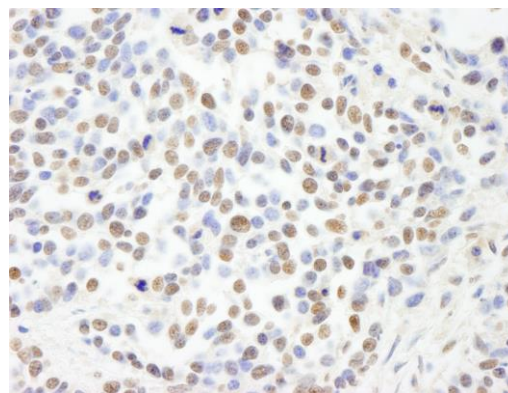
<b>APPLICATIONS</b>	IHC
<b>SPECIES REACTIVITY</b>	Human, Mouse
<b>PRESUMED REACTIVITY</b>	Based on 100% sequence identity, this antibody is predicted to react with Rat, Zebrafish, X. laevis, X. tropicalis, Chicken, Bovine, Dog, Rabbit, Guinea pig_10141, Orangutan, Monkey and Gorilla
<b>AMOUNT</b>	100 µl
<b>CONCENTRATION</b>	100 µg/ml
<b>STORAGE/SHELF LIFE</b>	2 – 8° C / 1 year from date of receipt
<b>PHYSICAL STATE</b>	Liquid
<b>BUFFER</b>	Tris-buffered Saline containing 0.1% BSA and 0.09% Sodium Azide
<b>ISOTYPE</b>	IgG
<b>ORIGIN</b>	USA
<b>PRODUCTION PROCEDURES</b>	<p>Antibody was affinity purified using an epitope specific to RbBP4 immobilized on solid support.</p> <p>The epitope recognized by IHC-00242 maps to a region between residue 1 and 50 of human retinoblastoma binding protein 4 (retinoblastoma-binding protein p48) using the numbering given in entry CAA52321.1 (GeneID 5928).</p> <p>Antibody concentration was determined by extinction coefficient: absorbance at 280 nm of 1.4 equals 1.0 mg of IgG.</p>
<b>APPLICATIONS</b>	<p>Centrifuge tube to remove product from lid. Optimal working dilutions should be determined experimentally by the investigator. Prepare working dilution immediately before use.</p> <p>Immunohistochemistry 1:100 – 1:500</p>
<b>APPLICATION NOTES</b>	<p>Epitope exposure is recommended.</p> <p>Epitope exposure with citrate buffer will enhance staining.</p> <p>Likely to work with frozen sections.</p> <p>In some cases, the antibody may be diluted further than indicated.</p>
<b>IHC HUMAN CONTROLS</b>	Anaplastic Thyroid Carcinoma, Bladder Cell Carcinoma, Breast Carcinoma, Colon Carcinoma, Ewing Sarcoma, Linitis Plastica Stomach Cancer, Metastatic Lymph Node, Non-Small Cell Lung Cancer, Ovarian Carcinoma, Pancreatic Islet Cell Tumor, Prostate Carcinoma, Skin Basal Cell Carcinoma, Skin Squamous Cell Carcinoma, Small Cell Lung Cancer, Stomach Adenocarcinoma, Testicular Seminoma
<b>IHC MOUSE CONTROLS</b>	Colon Carcinoma CT26, Skin, Teratoma
<b>ADDITIONAL INFO</b>	<p><a href="https://www.bethyl.com/product/IHC-00242">https://www.bethyl.com/product/IHC-00242</a></p> <p>Use the link above to view SDS, a current list of citations, and other product specific information.</p>

This document certifies that this product has met all of the quality control standards defined by Bethyl Laboratories, Inc.  
Eric McIntush, PhD | Chief Scientific Officer

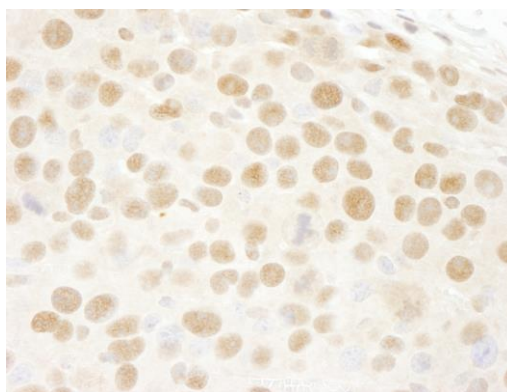
Date: June 21, 2019



**Detection of human RBBP4/RbAp48 by immunohistochemistry.** *Sample:* FFPE section of human bladder cell carcinoma. *Antibody:* Affinity purified rabbit anti-RBBP4/RbAp48 (Cat. No. IHC-00242) used at a dilution of 1:500. *Detection:* DAB



**Detection of human RBBP4/RbAp48 by immunohistochemistry.** *Sample:* FFPE section of human non-small cell lung cancer. *Antibody:* Affinity purified rabbit anti-RBBP4/RbAp48 (Cat. No. IHC-00242) used at a dilution of 1:100. *Detection:* DAB



**Detection of mouse RBBP4/RbAp48 by immunohistochemistry.** *Sample:* FFPE section of mouse renal cell carcinoma. *Antibody:* Affinity purified rabbit anti-RBBP4/RbAp48 (Cat. No. IHC-00242) used at a dilution of 1:100. *Detection:* DAB