

RBM25/RED120 IHC Antibody

Rabbit Polyclonal

Antigen Affinity Purified

Protein ID AAF19255.1

Catalog No. IHC-00233

GeneID 58517

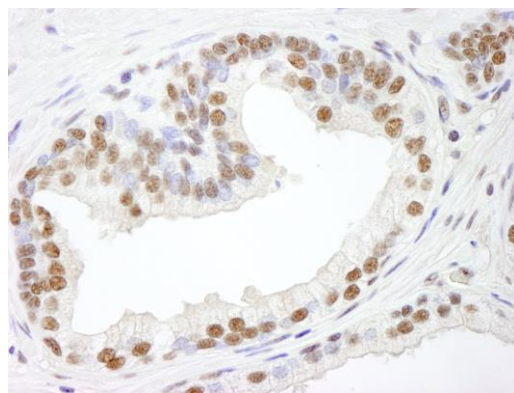
Lot No. IHC-00233-1



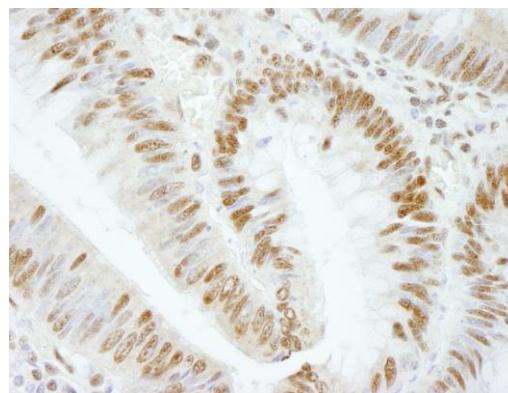
| | |
|------------------------------|---|
| APPLICATIONS | IHC |
| SPECIES REACTIVITY | Human, Mouse |
| PRESUMED REACTIVITY | Based on 100% sequence identity, this antibody is predicted to react with Rat, Chicken, Turkey, Bovine, Dog, Horse, Rabbit, Guinea pig_10141, Pig, Panda, Monkey, Gorilla and Chimpanzee |
| AMOUNT | 100 µl |
| CONCENTRATION | 100 µg/ml |
| STORAGE/SHELF LIFE | 2 – 8° C / 1 year from date of receipt |
| PHYSICAL STATE | Liquid |
| BUFFER | Tris-buffered Saline containing 0.1% BSA and 0.09% Sodium Azide |
| ISOTYPE | IgG |
| ORIGIN | USA |
| PRODUCTION PROCEDURES | <p>Antibody was affinity purified using an epitope specific to RBM25/RED120 immobilized on solid support.</p> <p>The epitope recognized by IHC-00233 maps to a region between residue 475 and 525 of human RNA binding motif protein 25 (Arg/Glu/Asp-rich protein, 120 kDa) using the numbering given in entry AAF19255.1 (GeneID 58517).</p> <p>Antibody concentration was determined by extinction coefficient: absorbance at 280 nm of 1.4 equals 1.0 mg of IgG.</p> |
| APPLICATIONS | <p>Centrifuge tube to remove product from lid. Optimal working dilutions should be determined experimentally by the investigator. Prepare working dilution immediately before use.</p> <p>Immunohistochemistry 1:100 – 1:500</p> |
| APPLICATION NOTES | <p>Epitope exposure is recommended.</p> <p>Epitope exposure with citrate buffer will enhance staining.</p> <p>Likely to work with frozen sections.</p> <p>In some cases, the antibody may be diluted further than indicated.</p> |
| IHC HUMAN CONTROLS | Breast Carcinoma, Colon Carcinoma, Linitis Plastica Stomach Cancer, Non-Small Cell Lung Cancer, Ovarian Carcinoma, Pancreatic Islet Cell Tumor, Prostate Carcinoma, Skin Basal Cell Carcinoma, Stomach Adenocarcinoma, Testicular Seminoma |
| IHC MOUSE CONTROLS | Colon Carcinoma CT26, Teratoma |
| ADDITIONAL INFO | <p>https://www.bethyl.com/product/IHC-00233</p> <p>Use the link above to view SDS, a current list of citations, and other product specific information.</p> |

This document certifies that this product has met all of the quality control standards defined by Bethyl Laboratories, Inc.
Eric McIntush, PhD | Chief Scientific Officer

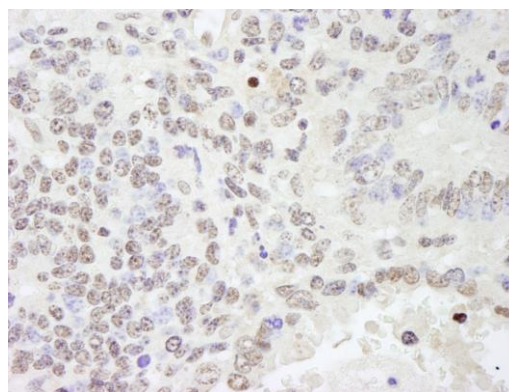
Date: June 21, 2019



Detection of human RBM25/RED120 by immunohistochemistry. *Sample:* FFPE section of human prostate adenocarcinoma. *Antibody:* Affinity purified rabbit anti-RBM25/RED120 (Cat. No. IHC-00233) used at a dilution of 1:500. *Detection:* DAB



Detection of human RBM25/RED120 by immunohistochemistry. *Sample:* FFPE section of human colon carcinoma. *Antibody:* Affinity purified rabbit anti-RBM25/RED120 (Cat. No. IHC-00233) used at a dilution of 1:100. *Detection:* DAB



Detection of mouse RBM25/RED120 by immunohistochemistry. *Sample:* FFPE section of mouse teratoma. *Antibody:* Affinity purified rabbit anti-RBM25/RED120 (Cat. No. IHC-00233) used at a dilution of 1:100. *Detection:* DAB