

Filamin A IHC Antibody

Rabbit Polyclonal

Antigen Affinity Purified

Protein ID NP_001447.1

Catalog No. IHC-00225

GeneID 2316

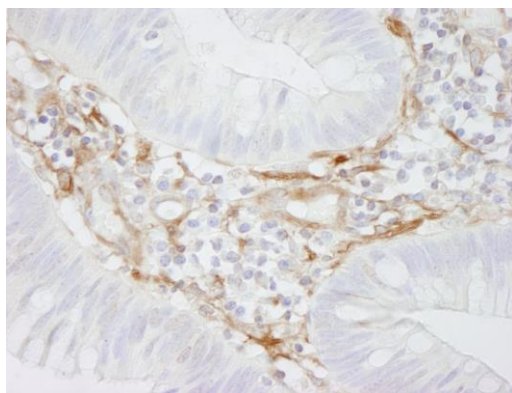
Lot No. IHC-00225-1



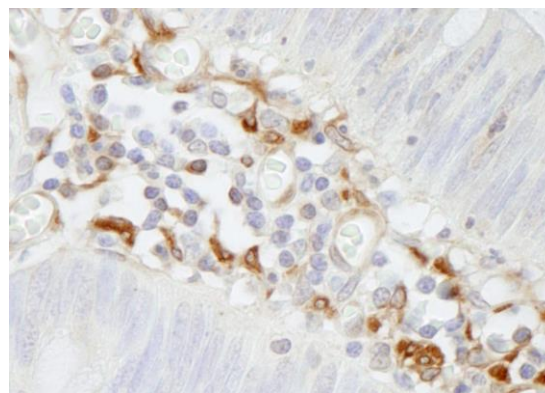
APPLICATIONS	IHC, IHC-IF
SPECIES REACTIVITY	Human
PRESUMED REACTIVITY	Based on 100% sequence identity, this antibody is predicted to react with Mouse, Orangutan, Monkey, Gorilla, Northern white-cheeked gibbon, Olive baboon, Crab-eating macaque and Dusky titi monkey
AMOUNT	100 µl
CONCENTRATION	50 µg/ml
STORAGE/SHELF LIFE	2 – 8° C / 1 year from date of receipt
PHYSICAL STATE	Liquid
BUFFER	Tris-buffered Saline containing 0.1% BSA and 0.09% Sodium Azide
ISOTYPE	IgG
ORIGIN	USA
PRODUCTION PROCEDURES	Antibody was affinity purified using an epitope specific to Filamin A immobilized on solid support. The epitope recognized by IHC-00225 maps to a region between residue 1725 and 1775 of human Filamin A using the numbering given in entry NP_001447.1 (GeneID 2316). Antibody concentration was determined by extinction coefficient: absorbance at 280 nm of 1.4 equals 1.0 mg of IgG.
APPLICATIONS	Centrifuge tube to remove product from lid. Optimal working dilutions should be determined experimentally by the investigator. Prepare working dilution immediately before use. Immunohistochemistry 1:100 – 1:500 Immunofluorescence 1:50 – 1:500 (IHC)
APPLICATION NOTES	Epitope exposure is recommended. Epitope exposure with citrate buffer will enhance staining. Likely to work with frozen sections.
IHC HUMAN CONTROLS	In some cases, the antibody may be diluted further than indicated. Breast Carcinoma, Colon Carcinoma, Non-Small Cell Lung Cancer, Ovarian Carcinoma, Prostate Carcinoma, Testicular Seminoma
ADDITIONAL INFO	https://www.bethyl.com/product/IHC-00225 Use the link above to view SDS, a current list of citations, and other product specific information.

This document certifies that this product has met all of the quality control standards defined by Bethyl Laboratories, Inc.
Eric McIntush, PhD | Chief Scientific Officer

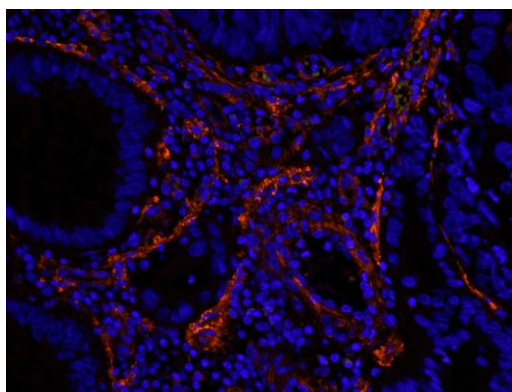
Date: June 21, 2019



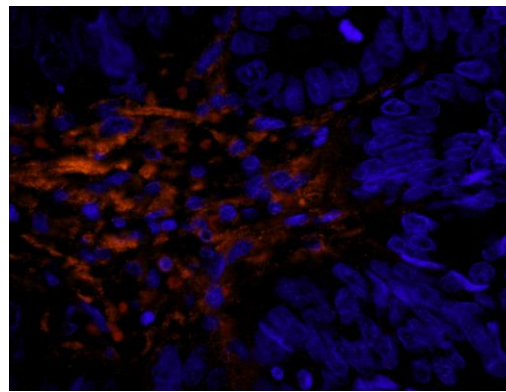
Detection of human Filamin A by immunohistochemistry.
Sample: FFPE section of human colon carcinoma. *Antibody:* Affinity purified rabbit anti-Filamin A (Cat. No. IHC-00225) used at a dilution of 1:250. *Detection:* DAB



Detection of human Filamin A by immunohistochemistry.
Sample: FFPE section of human colon carcinoma. *Antibody:* Affinity purified rabbit anti-Filamin A (Cat. No. IHC-00225) used at a dilution of 1:250. *Detection:* DAB



Detection of human Filamin by immunohistochemistry.
Sample: FFPE section of human colon carcinoma. *Antibody:* Affinity purified rabbit anti-Filamin (Cat. No. IHC-00225) used at a dilution of 1:100. *Detection:* Red-fluorescent Alexa Fluor® 555 goat anti-rabbit IgG (Invitrogen) used at a dilution of 1:500.



Detection of human Filamin by immunohistochemistry.
Sample: FFPE section of human colon carcinoma. *Antibody:* Affinity purified rabbit anti-Filamin (Cat. No. IHC-00225) used at a dilution of 1:100. *Detection:* Red-fluorescent Alexa Fluor® 555 goat anti-rabbit IgG (Invitrogen) used at a dilution of 1:500.