

Phospho PCNA (Y211) IHC Antibody

Rabbit Polyclonal

Antigen Affinity Purified

Protein ID NP_002583.1

Catalog No. IHC-00219

GeneID 5111

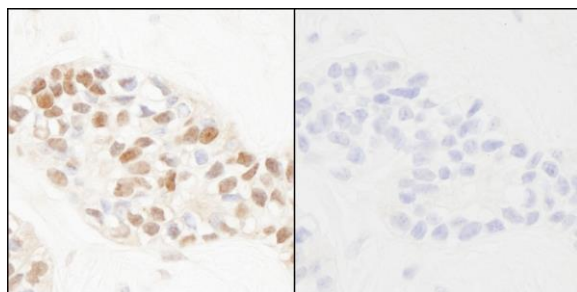
Lot No. IHC-00219-1



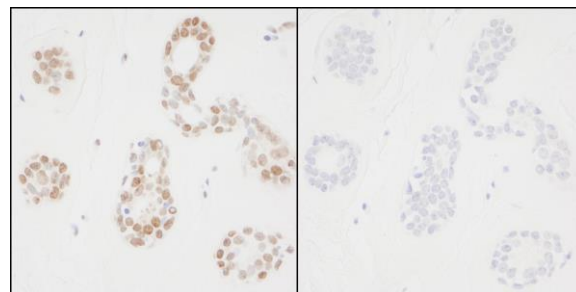
APPLICATIONS	IHC
SPECIES REACTIVITY	Human
AMOUNT	100 µl
CONCENTRATION	50 µg/ml
STORAGE/SHELF LIFE	2 – 8° C / 1 year from date of receipt
PHYSICAL STATE	Liquid
BUFFER	Tris-buffered Saline containing 0.1% BSA and 0.09% Sodium Azide
ISOTYPE	IgG
ORIGIN	USA
PRODUCTION PROCEDURES	<p>Antibody was affinity purified using an epitope specific to Phospho PCNA (Y211) immobilized on solid support.</p> <p>Immunogen for IHC-00219 was a phosphorylated synthetic peptide, which represented a portion of human proliferating cell nuclear antigen (GeneID 5111) around tyrosine 211 according to the numbering given in entry NP_002583.1.</p>
APPLICATIONS	<p>Centrifuge tube to remove product from lid. Optimal working dilutions should be determined experimentally by the investigator. Prepare working dilution immediately before use.</p> <p>Immunohistochemistry 1:100 – 1:500</p>
APPLICATION NOTES	<p>Epitope exposure is recommended.</p> <p>Epitope exposure with citrate buffer will enhance staining.</p> <p>Extended incubation with primary antibody (16–24 hours) at room temperature is recommended.</p> <p>Likely to work with frozen sections.</p> <p>In some cases, the antibody may be diluted further than indicated.</p>
ADDITIONAL INFO	<p>https://www.bethyl.com/product/IHC-00219</p> <p>Use the link above to view SDS, a current list of citations, and other product specific information.</p>

This document certifies that this product has met all of the quality control standards defined by Bethyl Laboratories, Inc.
Eric McIntush, PhD | Chief Scientific Officer

Date: June 21, 2019



Detection of human Phospho-PCNA (Y211) by immunohistochemistry. *Samples:* FFPE serial sections of human breast carcinoma. Mock phosphatase treated section (left) or calf intestinal phosphatase-treated section (right) immunostained for Phospho-PCNA (Y211). *Antibody:* Affinity purified rabbit anti-Phospho-PCNA (Y211) (Cat. No. IHC-00219) used at a dilution of 1:250 and incubated for 18 hours at room temperature. *Detection:* DAB



Detection of human Phospho-PCNA (Y211) by immunohistochemistry. *Samples:* FFPE serial sections of human breast tissue. Mock phosphatase treated section (left) or calf intestinal phosphatase-treated section (right) immunostained for Phospho-PCNA (Y211). *Antibody:* Affinity purified rabbit anti-Phospho-PCNA (Y211) (Cat. No. IHC-00219) used at a dilution of 1:250 and incubated for 18 hours at room temperature. *Detection:* DAB