

TRIM33/TIF1gamma IHC Antibody

Rabbit Polyclonal

Antigen Affinity Purified

Protein ID NP_056990.3

Catalog No. IHC-00216

GeneID 51592

Lot No. IHC-00216-1



APPLICATIONS	IHC
SPECIES REACTIVITY	Human, Mouse
PRESUMED REACTIVITY	Based on 100% sequence identity, this antibody is predicted to react with Rat, X. tropicalis, Chicken, Turkey, Bovine, Dog, Horse, Rabbit, Guinea pig_10141, Pig, Panda, Orangutan, Monkey and Gorilla
AMOUNT	100 µl
CONCENTRATION	250 µg/ml
STORAGE/SHELF LIFE	2 – 8° C / 1 year from date of receipt
PHYSICAL STATE	Liquid
BUFFER	Tris-buffered Saline containing 0.1% BSA and 0.09% Sodium Azide
ISOTYPE	IgG
ORIGIN	USA
PRODUCTION PROCEDURES	Antibody was affinity purified using an epitope specific to TRIM33/TIF1gamma immobilized on solid support.

The epitope recognized by IHC-00216 maps to a region between residue 1077 and the C-terminus (residue 1127) of human tripartite motif-containing 33 (transcriptional intermediary factor 1 gamma) using the numbering given in entry NP_056990.3 (GeneID 51592).

Antibody concentration was determined by extinction coefficient: absorbance at 280 nm of 1.4 equals 1.0 mg of IgG.

APPLICATIONS Centrifuge tube to remove product from lid. Optimal working dilutions should be determined experimentally by the investigator. Prepare working dilution immediately before use.

Immunohistochemistry 1:100 – 1:500

APPLICATION NOTES Epitope exposure is recommended.

Epitope exposure with citrate buffer will enhance staining.

Likely to work with frozen sections.

In some cases, the antibody may be diluted further than indicated.

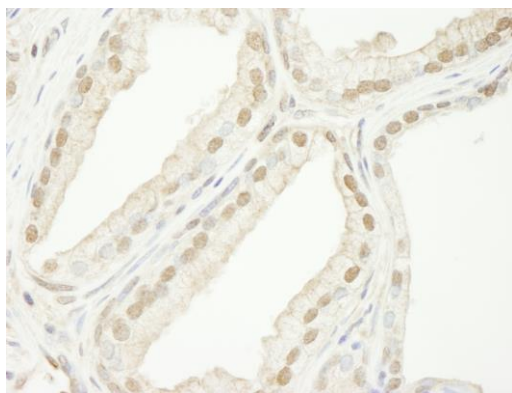
IHC HUMAN CONTROLS Breast Carcinoma, Colon Carcinoma, Prostate Carcinoma, Small Cell Lung Cancer

IHC MOUSE CONTROLS Teratoma

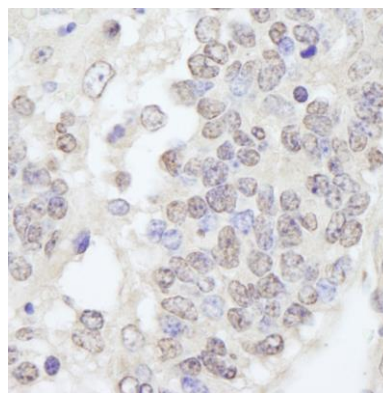
ADDITIONAL INFO <https://www.bethyl.com/product/IHC-00216>

Use the link above to view SDS, a current list of citations, and other product specific information.

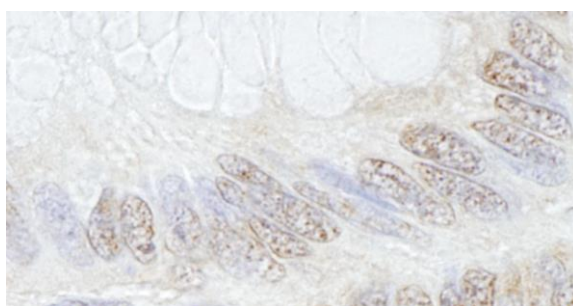
This document certifies that this product has met all of the quality control standards defined by Bethyl Laboratories, Inc.
Eric McIntush, PhD | Chief Scientific Officer Date: June 21, 2019



Detection of human TRIM33/TIF1gamma by immunohistochemistry. *Sample:* FFPE section of human prostate adenocarcinoma. *Antibody:* Affinity purified rabbit anti-TRIM33/TIF1gamma (Cat. No. IHC-00216) used at a dilution of 1:250. *Detection:* DAB



Detection of mouse TRIM33/TIF1gamma by immunohistochemistry. *Sample:* FFPE section of mouse teratoma. *Antibody:* Affinity purified rabbit anti-TRIM33/TIF1gamma (Cat. No. IHC-00216) used at a dilution of 1:250. *Detection:* DAB



Detection of human TRIM33/TIF1gamma by immunohistochemistry. *Sample:* FFPE section of human colon adenocarcinoma. *Antibody:* Affinity purified rabbit anti-TRIM33/TIF1gamma (Cat. No. IHC-00216) used at a dilution of 1:250. *Detection:* DAB