

# SF3b155/SAP155 IHC Antibody

Rabbit Polyclonal

Antigen Affinity Purified

Protein ID NP\_036565.2

Catalog No. IHC-00214

GeneID 23451

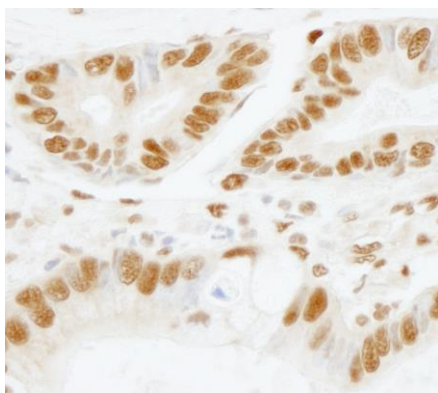
Lot No. IHC-00214-1



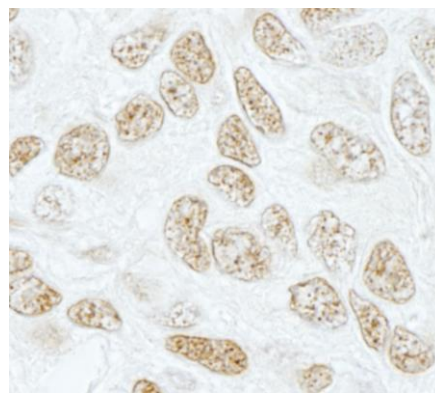
<b>APPLICATIONS</b>	IHC
<b>SPECIES REACTIVITY</b>	Human
<b>PRESUMED REACTIVITY</b>	Based on 100% sequence identity, this antibody is predicted to react with Mouse, Rat, X. tropicalis, Chicken, Turkey, Bovine, Dog, Horse, Rabbit, Guinea pig_10141, Pig, Panda, Orangutan and Monkey
<b>AMOUNT</b>	100 µl
<b>CONCENTRATION</b>	250 µg/ml
<b>STORAGE/SHELF LIFE</b>	2 – 8° C / 1 year from date of receipt
<b>PHYSICAL STATE</b>	Liquid
<b>BUFFER</b>	Tris-buffered Saline containing 0.1% BSA and 0.09% Sodium Azide
<b>ISOTYPE</b>	IgG
<b>ORIGIN</b>	USA
<b>PRODUCTION PROCEDURES</b>	<p>Antibody was affinity purified using an epitope specific to SF3b155/SAP155 immobilized on solid support.</p> <p>The epitope recognized by IHC-00214 maps to a region between residue 200 and 250 of human splicing factor 3b, subunit 1, 155kDa using the numbering given in entry NP_036565.2 (GeneID 23451).</p> <p>Antibody concentration was determined by extinction coefficient: absorbance at 280 nm of 1.4 equals 1.0 mg of IgG.</p>
<b>APPLICATIONS</b>	<p>Centrifuge tube to remove product from lid. Optimal working dilutions should be determined experimentally by the investigator. Prepare working dilution immediately before use.</p> <p>Immunohistochemistry 1:100 – 1:500</p>
<b>APPLICATION NOTES</b>	<p>Epitope exposure is recommended.</p> <p>Epitope exposure with citrate buffer will enhance staining.</p> <p>Likely to work with frozen sections.</p>
<b>IHC HUMAN CONTROLS</b>	<p>In some cases, the antibody may be diluted further than indicated.</p> <p>Anaplastic Thyroid Carcinoma, Bladder Cell Carcinoma, Colon Carcinoma, Ewing Sarcoma, Linitis Plastica Stomach Cancer, Metastatic Lymph Node, Ovarian Carcinoma, Pancreatic Islet Cell Tumor, Prostate Carcinoma, Skin Basal Cell Carcinoma, Stomach Adenocarcinoma, Testicular Seminoma</p>
<b>ADDITIONAL INFO</b>	<p><a href="https://www.bethyl.com/product/IHC-00214">https://www.bethyl.com/product/IHC-00214</a></p> <p>Use the link above to view SDS, a current list of citations, and other product specific information.</p>

This document certifies that this product has met all of the quality control standards defined by Bethyl Laboratories, Inc.  
Eric McIntush, PhD | Chief Scientific Officer

Date: June 21, 2019



**Detection of human SF3b155/SAP155 by immunohistochemistry.** *Sample:* FFPE section of human stomach adenocarcinoma. *Antibody:* Affinity purified rabbit anti-SF3b155/SAP155 (Cat. No. IHC-00214) used at a dilution of 1:250. *Detection:* DAB



**Detection of human SF3b155/SAP155 by immunohistochemistry.** *Sample:* FFPE section of human basal cell carcinoma. *Antibody:* Affinity purified rabbit anti-SF3b155/SAP155 (Cat. No. IHC-00214) used at a dilution of 1:250. *Detection:* DAB