

SMARCC2/BAF170 IHC Antibody

Rabbit Polyclonal

Antigen Affinity Purified

Protein ID NP_003066.2

Catalog No. IHC-00213

GeneID 6601

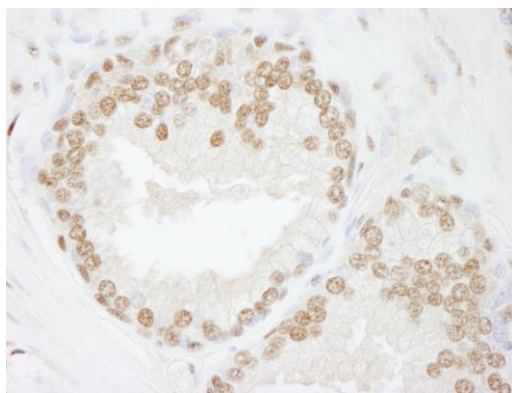
Lot No. IHC-00213-1



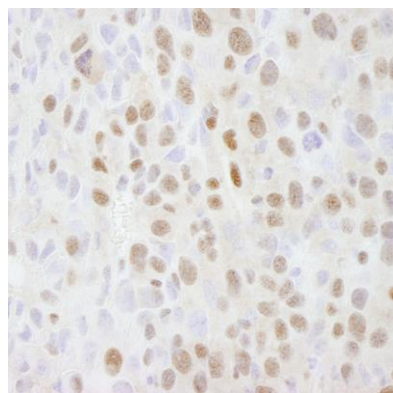
APPLICATIONS	IHC
SPECIES REACTIVITY	Human, Mouse
PRESUMED REACTIVITY	Based on 100% sequence identity, this antibody is predicted to react with Rat, Bovine, Dog, Horse, Rabbit, Pig, Panda, Orangutan, Monkey, Gorilla, Chimpanzee, Chinese hamster and Naked mole rat
AMOUNT	100 µl
CONCENTRATION	100 µg/ml
STORAGE/SHELF LIFE	2 – 8° C / 1 year from date of receipt
PHYSICAL STATE	Liquid
BUFFER	Tris-buffered Saline containing 0.1% BSA and 0.09% Sodium Azide
ISOTYPE	IgG
ORIGIN	USA
PRODUCTION PROCEDURES	<p>Antibody was affinity purified using an epitope specific to SMARCC2/BAF170 immobilized on solid support.</p> <p>The epitope recognized by IHC-00213 maps to a region between residue 1164 and the C-terminus (residue 1214) of human SWI/SNF related, matrix associated, actin dependent regulator of chromatin, subfamily c, member 2 (BRG1-associated factor 170) using the numbering given in entry NP_003066.2 (GeneID 6601).</p> <p>Antibody concentration was determined by extinction coefficient: absorbance at 280 nm of 1.4 equals 1.0 mg of IgG.</p>
APPLICATIONS	<p>Centrifuge tube to remove product from lid. Optimal working dilutions should be determined experimentally by the investigator. Prepare working dilution immediately before use.</p> <p>Immunohistochemistry 1:100 – 1:500</p>
APPLICATION NOTES	<p>Epitope exposure is recommended. Epitope exposure with citrate buffer will enhance staining. Likely to work with frozen sections.</p> <p>In some cases, the antibody may be diluted further than indicated.</p>
IHC HUMAN CONTROLS	Anaplastic Thyroid Carcinoma, Bladder Cell Carcinoma, Breast Carcinoma, Colon Carcinoma, Laryngeal Squamous Cell Carcinoma, Linitis Plastica Stomach Cancer, Metastatic Lymph Node, Non-Small Cell Lung Cancer, Ovarian Carcinoma, Prostate Carcinoma, Skin Basal Cell Carcinoma, Stomach Adenocarcinoma, Testicular Seminoma
IHC MOUSE CONTROLS	Squamous Cell Carcinoma
ADDITIONAL INFO	<p>https://www.bethyl.com/product/IHC-00213</p> <p>Use the link above to view SDS, a current list of citations, and other product specific information.</p>

This document certifies that this product has met all of the quality control standards defined by Bethyl Laboratories, Inc.
Eric McIntush, PhD | Chief Scientific Officer

Date: June 21, 2019



Detection of human SMARCC2/BAF170 by immunohistochemistry. *Sample:* FFPE section of human prostate adenocarcinoma. *Antibody:* Affinity purified rabbit anti-SMARCC2/BAF170 (Cat. No. IHC-00213) used at a dilution of 1:500. *Detection:* DAB



Detection of mouse SMARCC2/BAF170 by immunohistochemistry. *Sample:* FFPE section of mouse squamous cell carcinoma. *Antibody:* Affinity purified rabbit anti-SMARCC2/BAF170 (Cat. No. IHC-00213) used at a dilution of 1:500. *Detection:* DAB