

RBM16 IHC Antibody

Rabbit Polyclonal

Antigen Affinity Purified

Protein ID NP_055707.3

Catalog No. IHC-00212

GeneID 22828

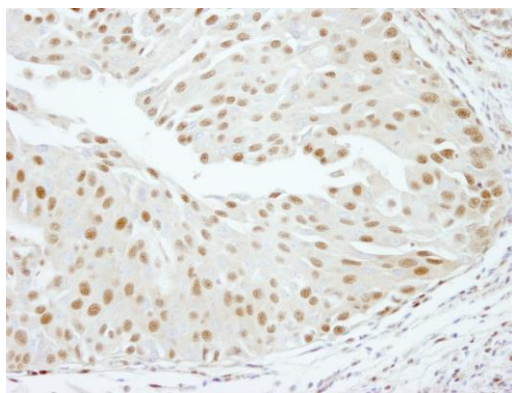
Lot No. IHC-00212-1



APPLICATIONS	IHC
SPECIES REACTIVITY	Human, Mouse
PRESUMED REACTIVITY	Based on 100% sequence identity, this antibody is predicted to react with Chicken, Turkey, Bovine, Dog, Horse, Pig, Panda, Orangutan, Monkey, Gorilla, Chimpanzee and Gray short-tailed opossum
AMOUNT	100 µl
CONCENTRATION	50 µg/ml
STORAGE/SHELF LIFE	2 – 8° C / 1 year from date of receipt
PHYSICAL STATE	Liquid
BUFFER	Tris-buffered Saline containing 0.1% BSA and 0.09% Sodium Azide
ISOTYPE	IgG
ORIGIN	USA
PRODUCTION PROCEDURES	<p>Antibody was affinity purified using an epitope specific to RBM16 immobilized on solid support.</p> <p>The epitope recognized by IHC-00212 maps to a region between residue 1221 and the C-terminus (residue 1271) of human RNA binding motif protein 16 using the numbering given in entry NP_055707.3 (GeneID 22828).</p> <p>Antibody concentration was determined by extinction coefficient: absorbance at 280 nm of 1.4 equals 1.0 mg of IgG.</p>
APPLICATIONS	<p>Centrifuge tube to remove product from lid. Optimal working dilutions should be determined experimentally by the investigator. Prepare working dilution immediately before use.</p> <p>Immunohistochemistry 1:100 – 1:500</p>
APPLICATION NOTES	<p>Epitope exposure is recommended.</p> <p>Epitope exposure with citrate buffer will enhance staining.</p> <p>Likely to work with frozen sections.</p> <p>In some cases, the antibody may be diluted further than indicated.</p>
IHC HUMAN CONTROLS	Anaplastic Thyroid Carcinoma, Bladder Cell Carcinoma, Colon Carcinoma, Laryngeal Squamous Cell Carcinoma, Linitis Plastica Stomach Cancer, Metastatic Lymph Node, Non-Small Cell Lung Cancer, Ovarian Carcinoma, Pancreatic Islet Cell Tumor, Prostate Carcinoma, Skin Basal Cell Carcinoma, Small Cell Lung Cancer, Stomach Adenocarcinoma, Testicular Seminoma
IHC MOUSE CONTROLS	Colon Carcinoma CT26, Squamous Cell Carcinoma, Teratoma
ADDITIONAL INFO	<p>https://www.bethyl.com/product/IHC-00212</p> <p>Use the link above to view SDS, a current list of citations, and other product specific information.</p>

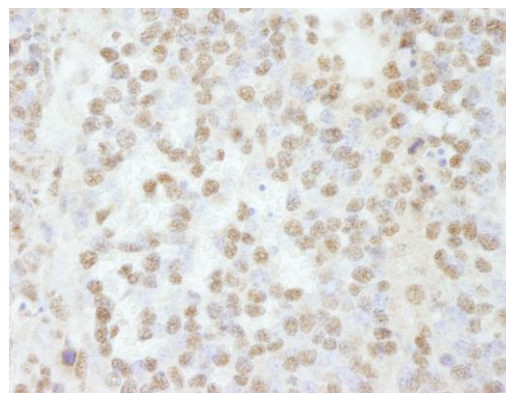
This document certifies that this product has met all of the quality control standards defined by Bethyl Laboratories, Inc.
Eric McIntush, PhD | Chief Scientific Officer

Date: June 21, 2019

**Detection of human RBM16 by immunohistochemistry.**

Sample: FFPE section of human bladder carcinoma.

Antibody: Affinity purified rabbit anti-RBM16 (Cat. No. IHC-00212) used at a dilution of 1:250. *Detection:* DAB

**Detection of mouse RBM16 by immunohistochemistry.**

Sample: FFPE section of mouse teratoma. *Antibody:* Affinity purified rabbit anti-RBM16 (Cat. No. IHC-00212) used at a dilution of 1:250. *Detection:* DAB