

Reticulocalbin-1 IHC Antibody

Rabbit Polyclonal

Antigen Affinity Purified Protein ID Q15293

Catalog No. IHC-00207 GeneID 5954

Lot No. IHC-00207-1



APPLICATIONS	IHC, IHC-IF
SPECIES REACTIVITY	Human
PRESUMED REACTIVITY	Based on 100% sequence identity, this antibody is predicted to react with Mouse, Rat, Pig, Orangutan, Monkey, Gorilla, Little brown bat and Small-eared galago
AMOUNT	100 µl
CONCENTRATION	250 µg/ml
STORAGE/SHELF LIFE	2 - 8° C / 1 year from date of receipt
PHYSICAL STATE	Liquid
BUFFER	Tris-buffered Saline containing 0.1% BSA and 0.09% Sodium Azide
ISOTYPE	IgG
ORIGIN	USA
PRODUCTION PROCEDURES	Antibody was affinity purified using an epitope specific to Reticulocalbin-1 immobilized on solid support.

The epitope recognized by IHC-00207 maps to a region between residues 1 and 75 of human Reticulocalbin-1, EF-hand calcium binding domain using the numbering given in Swiss-Prot entry Q15293 (GeneID 5954).

APPLICATIONS Centrifuge tube to remove product from lid. Optimal working dilutions should be determined experimentally by the investigator. Prepare working dilution immediately before use.

Immunohistochemistry 1:100 - 1:500

Immunofluorescence 1:50 - 1:500
(IHC)

APPLICATION NOTES Epitope exposure is recommended.

Epitope exposure with citrate buffer will enhance staining.

Likely to work with frozen sections.

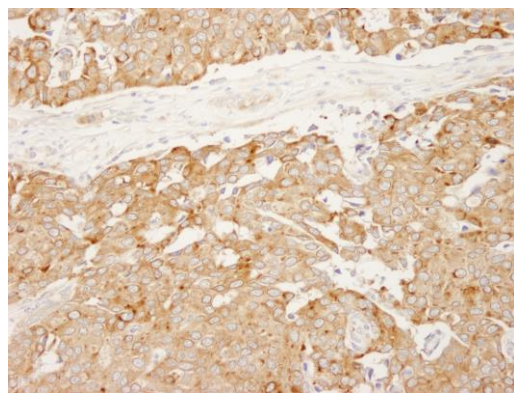
In some cases, the antibody may be diluted further than indicated.

IHC HUMAN CONTROLS Breast Carcinoma, Colon Carcinoma, Metastatic Lymph Node, Ovarian Carcinoma, Pancreatic Islet Cell Tumor

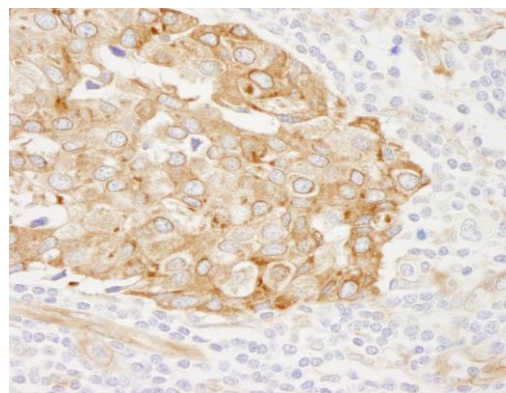
ADDITIONAL INFO <https://www.bethyl.com/product/IHC-00207>

Use the link above to view SDS, a current list of citations, and other product specific information.

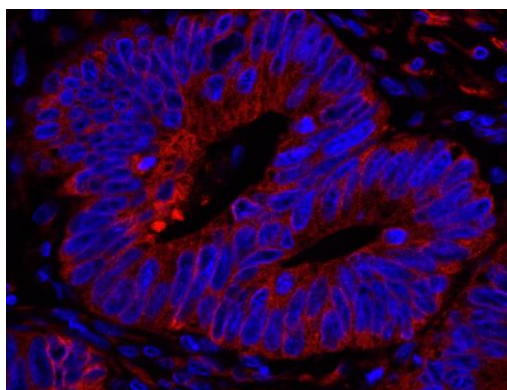
This document certifies that this product has met all of the quality control standards defined by Bethyl Laboratories, Inc.
Eric McIntush, PhD | Chief Scientific Officer Date: June 21, 2019



Detection of human Reticulocalbin by immunohistochemistry. *Sample:* FFPE section of human breast carcinoma. *Antibody:* Affinity purified rabbit anti-Reticulocalbin (Cat. No. IHC-00207) used at a dilution of 1:250. *Detection:* DAB



Detection of human Reticulocalbin by immunohistochemistry. *Sample:* FFPE section of human breast carcinoma. *Antibody:* Affinity purified rabbit anti-Reticulocalbin (Cat. No. IHC-00207) used at a dilution of 1:250. *Detection:* DAB



Detection of human Reticulocalbin by immunohistochemistry. *Sample:* FFPE section of human breast carcinoma. *Antibody:* Affinity purified rabbit anti-Reticulocalbin (Cat. No. IHC-00207) used at a dilution of 1:100. *Detection:* Red-fluorescent goat anti-rabbit IgG highly cross-adsorbed Antibody.