

# RIF1 IHC Antibody

Rabbit Polyclonal

Antigen Affinity Purified

Protein ID NP\_060621.3

Catalog No. IHC-00203

GeneID 55183

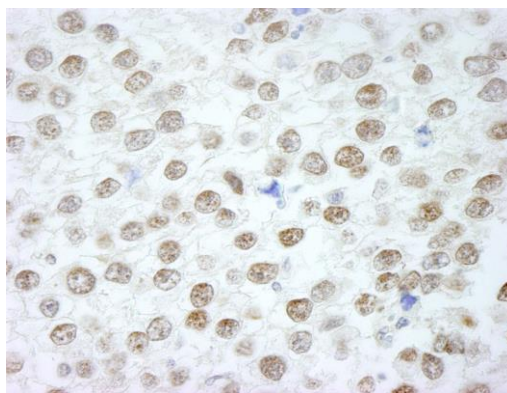
Lot No. IHC-00203-1



<b>APPLICATIONS</b>	IHC
<b>SPECIES REACTIVITY</b>	Human
<b>PRESUMED REACTIVITY</b>	Based on 100% sequence identity, this antibody is predicted to react with Orangutan, Chimpanzee and Northern white-cheeked gibbon
<b>AMOUNT</b>	100 µl
<b>CONCENTRATION</b>	250 µg/ml
<b>STORAGE/SHELF LIFE</b>	2 – 8° C / 1 year from date of receipt
<b>PHYSICAL STATE</b>	Liquid
<b>BUFFER</b>	Tris-buffered Saline containing 0.1% BSA and 0.09% Sodium Azide
<b>ISOTYPE</b>	IgG
<b>ORIGIN</b>	USA
<b>PRODUCTION PROCEDURES</b>	Antibody was affinity purified using an epitope specific to RIF1 immobilized on solid support.  The epitope recognized by IHC-00203 maps to a region between residues 2425 and the C-terminus (residue 2472) of human Rap1 Interacting Factor 1 using the numbering given in entry NP_060621.3 (GeneID 55183).
<b>APPLICATIONS</b>	Centrifuge tube to remove product from lid. Optimal working dilutions should be determined experimentally by the investigator. Prepare working dilution immediately before use.  Immunohistochemistry 1:100 – 1:500
<b>APPLICATION NOTES</b>	Epitope exposure is recommended.  Epitope exposure with citrate buffer will enhance staining.  Likely to work with frozen sections.
<b>IHC HUMAN CONTROLS</b>	In some cases, the antibody may be diluted further than indicated. Anaplastic Thyroid Carcinoma, Breast Carcinoma, Ewing Sarcoma, Laryngeal Squamous Cell Carcinoma, Metastatic Lymph Node, Ovarian Carcinoma, Prostate Carcinoma, Small Cell Lung Cancer, Testicular Seminoma
<b>ADDITIONAL INFO</b>	<a href="https://www.bethyl.com/product/IHC-00203">https://www.bethyl.com/product/IHC-00203</a> Use the link above to view SDS, a current list of citations, and other product specific information.

This document certifies that this product has met all of the quality control standards defined by Bethyl Laboratories, Inc.  
Eric McIntush, PhD | Chief Scientific Officer

Date: June 21, 2019

**Detection of human RIF1 by immunohistochemistry.**

*Sample:* FFPE section of human seminoma. *Antibody:* Affinity purified rabbit anti-RIF1 (Cat. No. IHC-00203) used at a dilution of 1:250. *Detection:* DAB