

RCH1 /KPNA2 IHC Antibody

Rabbit Polyclonal

Antigen Affinity Purified

Protein ID NP_002257.1

Catalog No. IHC-00201

GeneID 3838

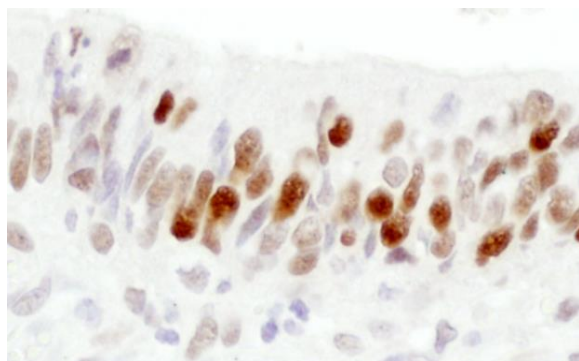
Lot No. IHC-00201-2



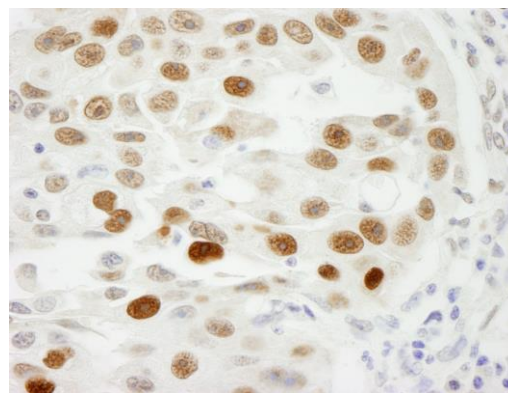
APPLICATIONS	IHC
SPECIES REACTIVITY	Human, Mouse
PRESUMED REACTIVITY	Based on 100% sequence identity, this antibody is predicted to react with Orangutan and Chimpanzee
AMOUNT	100 µl
CONCENTRATION	100 µg/ml
STORAGE/SHELF LIFE	2 – 8° C / 1 year from date of receipt
PHYSICAL STATE	Liquid
BUFFER	Tris-buffered Saline containing 0.1% BSA and 0.09% Sodium Azide
ISOTYPE	IgG
ORIGIN	USA
PRODUCTION PROCEDURES	<p>Antibody was affinity purified using an epitope specific to RCH1 immobilized on solid support.</p> <p>The epitope recognized by IHC-00201 maps to a region between residues 475 and the C-terminus (residue 529) of human RAG cohort 1 (Karyopherin Alpha 2) using the numbering given in entry NP_002257.1 (GeneID 3838).</p>
APPLICATIONS	<p>Centrifuge tube to remove product from lid. Optimal working dilutions should be determined experimentally by the investigator. Prepare working dilution immediately before use.</p> <p>Immunohistochemistry 1:100 – 1:500</p>
APPLICATION NOTES	<p>Epitope exposure is recommended.</p> <p>Epitope exposure with citrate buffer will enhance staining.</p> <p>Likely to work with frozen sections.</p>
IHC HUMAN CONTROLS	<p>In some cases, the antibody may be diluted further than indicated.</p> <p>Anaplastic Thyroid Carcinoma, Bladder Cell Carcinoma, Breast Carcinoma, Colon Carcinoma, Laryngeal Squamous Cell Carcinoma, Metastatic Lymph Node, Ovarian Carcinoma, Prostate Carcinoma, Skin Melanoma, Small Cell Lung Cancer, Stomach Adenocarcinoma, Testicular Seminoma</p>
IHC MOUSE CONTROLS	Squamous Cell Carcinoma, Teratoma
ADDITIONAL INFO	<p>https://www.bethyl.com/product/IHC-00201</p> <p>Use the link above to view SDS, a current list of citations, and other product specific information.</p>

This document certifies that this product has met all of the quality control standards defined by Bethyl Laboratories, Inc.
Eric McIntush, PhD | Chief Scientific Officer

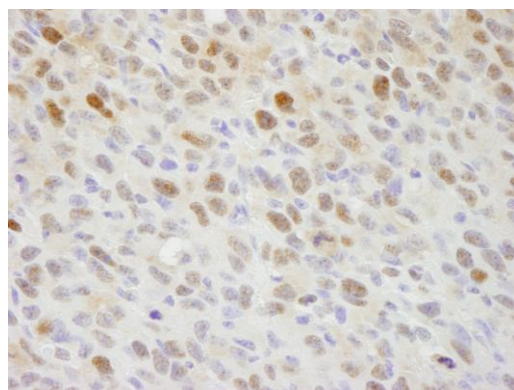
Date: June 21, 2019



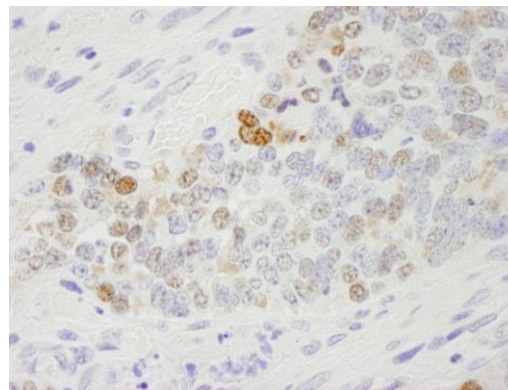
Detection of human RCH1 by immunohistochemistry.
Sample: FFPE section of human colon carcinoma. *Antibody:* Affinity purified rabbit anti-RCH1 (Cat. No. IHC-00201 Lot 2) used at a dilution of 1:500. *Detection:* DAB



Detection of human RCH1 by immunohistochemistry.
Sample: FFPE section of human bladder carcinoma. *Antibody:* Affinity purified rabbit anti-RCH1 (Cat. No. IHC-00201) used at a dilution of 1:250. *Detection:* DAB



Detection of mouse RCH1 by immunohistochemistry.
Sample: FFPE section of mouse squamous cell carcinoma. *Antibody:* Affinity purified rabbit anti-RCH1 (Cat. No. IHC-00201) used at a dilution of 1:250. *Detection:* DAB



Detection of mouse RCH1 by immunohistochemistry.
Sample: FFPE section of mouse teratoma. *Antibody:* Affinity purified rabbit anti-RCH1 (Cat. No. IHC-00201) used at a dilution of 1:250. *Detection:* DAB