

RecQ1 IHC Antibody

Rabbit Polyclonal

Antigen Affinity Purified Protein ID P46063

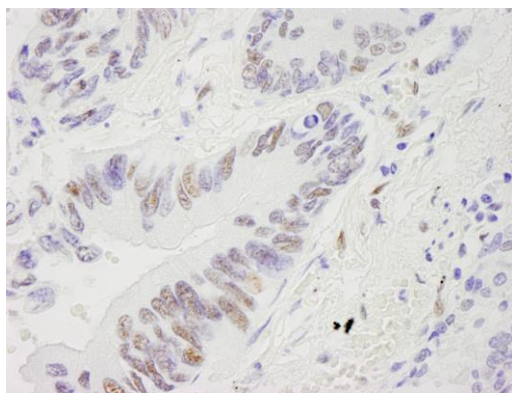
Catalog No. IHC-00200 GeneID 5965

Lot No. IHC-00200-1

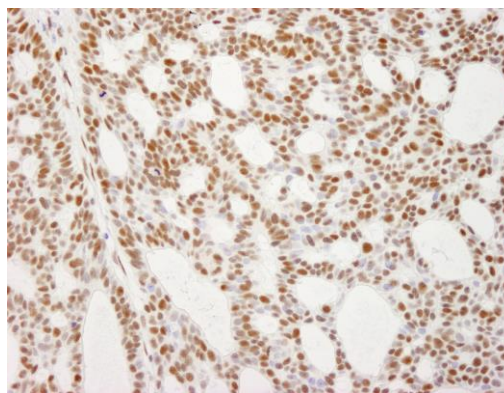


APPLICATIONS	IHC
SPECIES REACTIVITY	Human
PRESUMED REACTIVITY	Based on 100% sequence identity, this antibody is predicted to react with Orangutan, Monkey, Gorilla, Chimpanzee, Northern white-cheeked gibbon, thirteen-lined ground squirrel and Small-eared galago
AMOUNT	100 µl
CONCENTRATION	250 µg/ml
STORAGE/SHELF LIFE	2 - 8° C / 1 year from date of receipt
PHYSICAL STATE	Liquid
BUFFER	Tris-buffered Saline containing 0.1% BSA and 0.09% Sodium Azide
ORIGIN	USA
PRODUCTION PROCEDURES	Antibody was affinity purified using an epitope specific to RecQ1 immobilized on solid support. The epitope recognized by IHC-00200 maps to a region between residues 600 and the C-terminus (residue 649) of human RecQ protein-like (DNA helicase Q1-like) 1 using the numbering given in Swiss-Prot entry P46063 (GeneID 5965).
APPLICATIONS	Centrifuge tube to remove product from lid. Optimal working dilutions should be determined experimentally by the investigator. Prepare working dilution immediately before use. Immunohistochemistry 1:100 - 1:500
APPLICATION NOTES	Epitope exposure is recommended. Epitope exposure with citrate buffer will enhance staining. Likely to work with frozen sections. In some cases, the antibody may be diluted further than indicated.
IHC HUMAN CONTROLS	Anaplastic Thyroid Carcinoma, Bladder Cell Carcinoma, Breast Carcinoma, Colon Carcinoma, Metastatic Lymph Node, Ovarian Carcinoma, Pancreatic Islet Cell Tumor, Prostate Carcinoma, Skin Basal Cell Carcinoma, Small Cell Lung Cancer, Testicular Seminoma
ADDITIONAL INFO	https://www.bethyl.com/product/IHC-00200 Use the link above to view SDS, a current list of citations, and other product specific information.

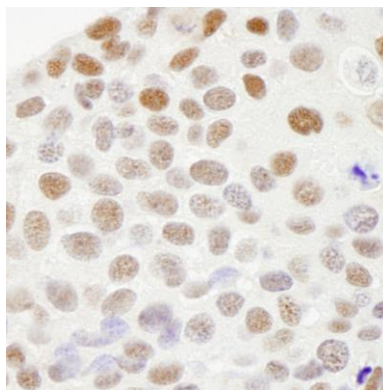
This document certifies that this product has met all of the quality control standards defined by Bethyl Laboratories, Inc.
Eric McIntush, PhD | Chief Scientific Officer Date: June 21, 2019



Detection of human RecQ1 by immunohistochemistry.
Sample: FFPE section of human lung adenocarcinoma.
Antibody: Affinity purified rabbit anti-RecQ1 (Cat. No. IHC-00200) used at a dilution of 1:250. *Detection:* DAB



Detection of human RecQ1 by immunohistochemistry.
Sample: FFPE section of human basal cell carcinoma.
Antibody: Affinity purified rabbit anti-RecQ1 (Cat. No. IHC-00200) used at a dilution of 1:250. *Detection:* DAB



Detection of human RecQ1 by immunohistochemistry.
Sample: FFPE section of human breast adenocarcinoma.
Antibody: Affinity purified rabbit anti-RecQ1 (Cat. No. IHC-00200) used at a dilution of 1:250. *Detection:* DAB