

SMC6 IHC Antibody

Rabbit Polyclonal

Antigen Affinity Purified

Protein ID Q96SB8

Catalog No. IHC-00198

GeneID 79677

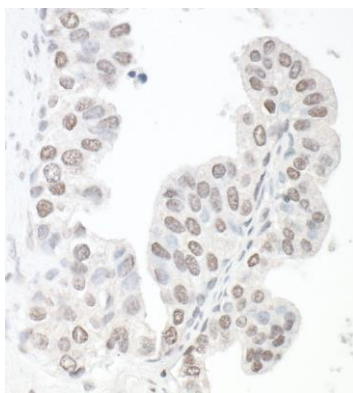
Lot No. IHC-00198-3



APPLICATIONS	IHC
SPECIES REACTIVITY	Human
PRESUMED REACTIVITY	Based on 100% sequence identity, this antibody is predicted to react with Chimpanzee
AMOUNT	100 µl
CONCENTRATION	250 µg/ml
STORAGE/SHELF LIFE	2 – 8° C / 1 year from date of receipt
PHYSICAL STATE	Liquid
BUFFER	Tris-buffered Saline containing 0.1% BSA and 0.09% Sodium Azide
ORIGIN	USA
PRODUCTION PROCEDURES	Antibody was affinity purified using an epitope specific to SMC6 immobilized on solid support. The epitope recognized by IHC-00198 maps to a region between residues 1050 and the C-terminus (residue 1091) of human Structural Maintenance of Chromosomes 6 using the numbering given in TrEMBL entry Q96SB8 (GeneID 79677).
APPLICATIONS	Centrifuge tube to remove product from lid. Optimal working dilutions should be determined experimentally by the investigator. Prepare working dilution immediately before use. Immunohistochemistry 1:100 – 1:500
APPLICATION NOTES	Epitope exposure is recommended. Epitope exposure with citrate buffer will enhance staining. Likely to work with frozen sections.
IHC HUMAN CONTROLS	In some cases, the antibody may be diluted further than indicated. Breast Carcinoma, Ovarian Carcinoma, Prostate Carcinoma, Stomach Adenocarcinoma
ADDITIONAL INFO	https://www.bethyl.com/product/IHC-00198 Use the link above to view SDS, a current list of citations, and other product specific information.

This document certifies that this product has met all of the quality control standards defined by Bethyl Laboratories, Inc.
Eric McIntush, PhD | Chief Scientific Officer

Date: June 21, 2019



Detection of human SMC6 by immunohistochemistry.
Sample: FFPE section of prostate carcinoma. *Antibody:* Rabbit anti-SMC6 antibody (IHC-00198 lot 3) used at 1:250. *Secondary:* HRP-conjugated goat anti-rabbit IgG (A120-501P).