

# p73 IHC Antibody

Rabbit Polyclonal

Antigen Affinity Purified

Protein ID O15350

Catalog No. IHC-00197

GeneID 7161

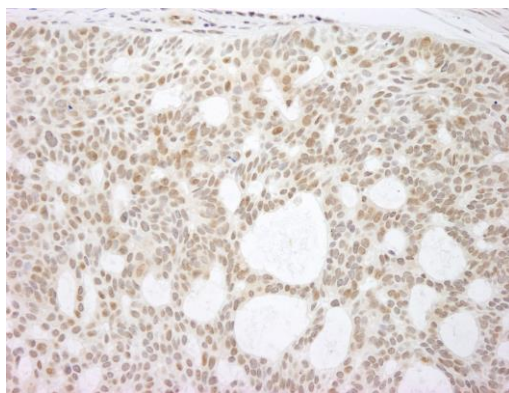
Lot No. IHC-00197-1



<b>APPLICATIONS</b>	IHC
<b>SPECIES REACTIVITY</b>	Human
<b>PRESUMED REACTIVITY</b>	Based on 100% sequence identity, this antibody is predicted to react with Orangutan, Monkey, Gorilla, Chimpanzee, Small-eared galago, Crab-eating macaque and Green monkey
<b>AMOUNT</b>	100 µl
<b>CONCENTRATION</b>	250 µg/ml
<b>STORAGE/SHELF LIFE</b>	2 – 8° C / 1 year from date of receipt
<b>PHYSICAL STATE</b>	Liquid
<b>BUFFER</b>	Tris-buffered Saline containing 0.1% BSA and 0.09% Sodium Azide
<b>ISOTYPE</b>	IgG
<b>ORIGIN</b>	USA
<b>PRODUCTION PROCEDURES</b>	<p>Antibody was affinity purified using an epitope specific to p73 immobilized on solid support.</p> <p>The epitope recognized by IHC-00197 maps to a region between residues 1 and 62 of human tumor protein p73 using the numbering given in Swiss-Prot entry O15350 (GeneID 7161). The epitope is found in isoforms alpha, beta, gamma, delta, epsilon, zeta, and kappa of human p73. The antibody is not expected to react with deltaNp73.</p>
<b>APPLICATIONS</b>	<p>Centrifuge tube to remove product from lid. Optimal working dilutions should be determined experimentally by the investigator. Prepare working dilution immediately before use.</p> <p>Immunohistochemistry 1:100 – 1:500</p>
<b>APPLICATION NOTES</b>	<p>Epitope exposure is recommended.</p> <p>Epitope exposure with citrate buffer will enhance staining.</p> <p>Likely to work with frozen sections.</p>
<b>IHC HUMAN CONTROLS</b>	<p>In some cases, the antibody may be diluted further than indicated.</p> <p>Anaplastic Thyroid Carcinoma, Bladder Cell Carcinoma, Breast Carcinoma, Laryngeal Squamous Cell Carcinoma, Ovarian Carcinoma, Prostate Carcinoma, Skin Basal Cell Carcinoma</p>
<b>ADDITIONAL INFO</b>	<p><a href="https://www.bethyl.com/product/IHC-00197">https://www.bethyl.com/product/IHC-00197</a></p> <p>Use the link above to view SDS, a current list of citations, and other product specific information.</p>

This document certifies that this product has met all of the quality control standards defined by Bethyl Laboratories, Inc.  
Eric McIntush, PhD | Chief Scientific Officer

Date: June 21, 2019

**Detection of human p73 by immunohistochemistry.**

*Sample:* FFPE section of human basal cell carcinoma.

*Antibody:* Affinity purified rabbit anti-p73 (Cat. No. IHC-00197) used at a dilution of 1:250. *Detection:* DAB