

# p14ARF IHC Antibody

Rabbit Polyclonal

Antigen Affinity Purified

Protein ID Q8N726

Catalog No. IHC-00196

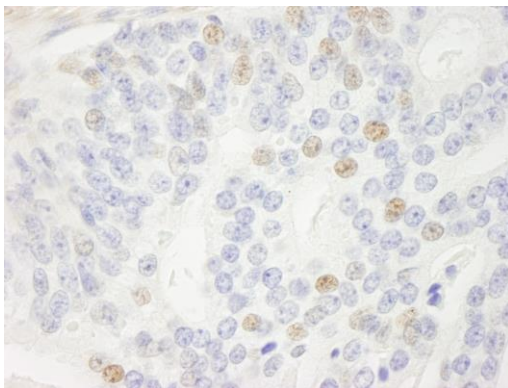
GeneID 1029

Lot No. IHC-00196-1



<b>APPLICATIONS</b>	IHC
<b>SPECIES REACTIVITY</b>	Human
<b>PRESUMED REACTIVITY</b>	Based on 100% sequence identity, this antibody is predicted to react with Orangutan and White-tufted-ear marmoset
<b>AMOUNT</b>	100 µl
<b>CONCENTRATION</b>	250 µg/ml
<b>STORAGE/SHELF LIFE</b>	2 – 8° C / 1 year from date of receipt
<b>PHYSICAL STATE</b>	Liquid
<b>BUFFER</b>	Tris-buffered Saline containing 0.1% BSA and 0.09% Sodium Azide
<b>ISOTYPE</b>	IgG
<b>ORIGIN</b>	USA
<b>PRODUCTION PROCEDURES</b>	Antibody was affinity purified using an epitope specific to p14ARF immobilized on solid support.  The epitope recognized by IHC-00196 maps to a region between residues 82 and the C-terminus (residue 132) of human p14ARF using the numbering given in entry NP_478102.2 (GeneID 1029).
<b>APPLICATIONS</b>	Centrifuge tube to remove product from lid. Optimal working dilutions should be determined experimentally by the investigator. Prepare working dilution immediately before use.  Immunohistochemistry 1:100 – 1:500
<b>APPLICATION NOTES</b>	Epitope exposure is recommended.  Epitope exposure with citrate buffer will enhance staining.  Likely to work with frozen sections.  In some cases, the antibody may be diluted further than indicated.
<b>IHC HUMAN CONTROLS</b>	Breast Carcinoma, Colon Carcinoma, Metastatic Lymph Node, Ovarian Carcinoma, Prostate Carcinoma, Testicular Seminoma
<b>ADDITIONAL INFO</b>	<a href="https://www.bethyl.com/product/IHC-00196">https://www.bethyl.com/product/IHC-00196</a> Use the link above to view SDS, a current list of citations, and other product specific information.

This document certifies that this product has met all of the quality control standards defined by Bethyl Laboratories, Inc.  
Eric McIntush, PhD | Chief Scientific Officer Date: January 10, 2020



**Detection of human p14ARF by immunohistochemistry.**  
*Sample:* FFPE section of human prostate adenocarcinoma.  
*Antibody:* Affinity purified rabbit anti-p14ARF (Cat. No. IHC-00196) used at a dilution of 1:250. *Detection:* DAB