

NF2 IHC Antibody

Rabbit Polyclonal

Antigen Affinity Purified

Protein ID NP_000259.1

Catalog No. IHC-00193

GeneID 4771

Lot No. IHC-00193-1



APPLICATIONS	IHC, IHC-IF
SPECIES REACTIVITY	Human
PRESUMED REACTIVITY	Based on 100% sequence identity, this antibody is predicted to react with Mouse, Rat, Bovine, Dog, Horse, Rabbit, Pig, Panda, Orangutan, Gorilla, Chinese hamster and Northern white-cheeked gibbon
AMOUNT	100 µl
CONCENTRATION	100 µg/ml
STORAGE/SHELF LIFE	2 – 8° C / 1 year from date of receipt
PHYSICAL STATE	Liquid
BUFFER	Tris-buffered Saline containing 0.1% BSA and 0.09% Sodium Azide
ISOTYPE	IgG
ORIGIN	USA
PRODUCTION PROCEDURES	Antibody was affinity purified using an epitope specific to NF2 isoform1 immobilized on solid support.

The epitope recognized by IHC-00193 maps to a region between residues 550 and the C-terminus (residue 595) of human Neurofibromin 2 using the numbering given in entry NP_000259.1 (GeneID 4771). This epitope is common to NF2 isoforms 1 and 9 (Mer162).

APPLICATIONS Centrifuge tube to remove product from lid. Optimal working dilutions should be determined experimentally by the investigator. Prepare working dilution immediately before use.

Immunohistochemistry 1:100 – 1:500

Immunofluorescence 1:50 – 1:500
(IHC)

APPLICATION NOTES Epitope exposure is recommended.

Epitope exposure with citrate buffer will enhance staining.

Likely to work with frozen sections.

In some cases, the antibody may be diluted further than indicated.

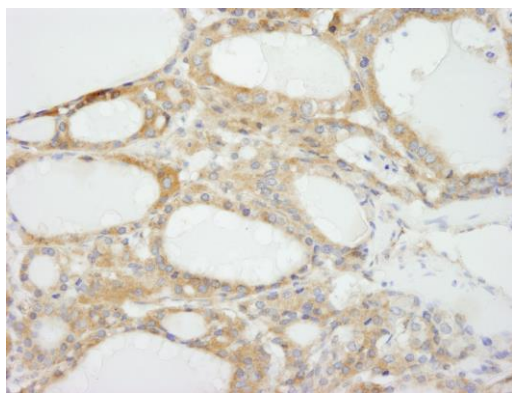
IHC HUMAN CONTROLS Anaplastic Thyroid Carcinoma, Breast Carcinoma, Ovarian Carcinoma

ADDITIONAL INFO <https://www.bethyl.com/product/IHC-00193>

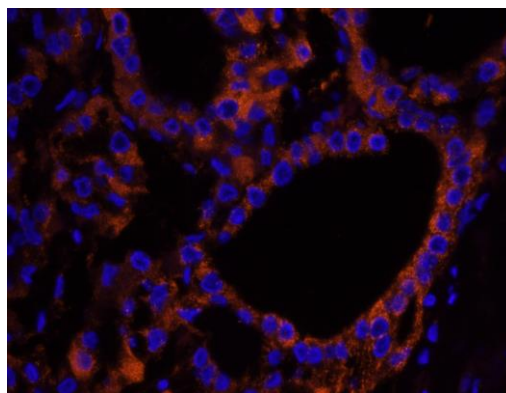
Use the link above to view SDS, a current list of citations, and other product specific information.

This document certifies that this product has met all of the quality control standards defined by Bethyl Laboratories, Inc.
Eric McIntush, PhD | Chief Scientific Officer

Date: June 21, 2019



Detection of human NF2 isoform 1 by immunohistochemistry. *Sample:* FFPE section of human thyroid carcinoma. *Antibody:* Affinity purified rabbit anti-NF2 isoform 1 (Cat. No. IHC-00193) used at a dilution of 1:500. *Detection:* DAB



Detection of human NF2 isoform 1 by immunohistochemistry. *Sample:* FFPE section of human thyroid carcinoma. *Antibody:* Affinity purified rabbit anti-NF2 isoform 1 (Cat. No. IHC-00193) used at a dilution of 1:100. *Detection:* Red-fluorescent Alexa Fluor® 555 goat anti-rabbit IgG (Invitrogen) used at a dilution of 1:500.