

NCOA62 IHC Antibody

Rabbit Polyclonal

Antigen Affinity Purified

Protein ID NP_036377.1

Catalog No. IHC-00192

GeneID 22938

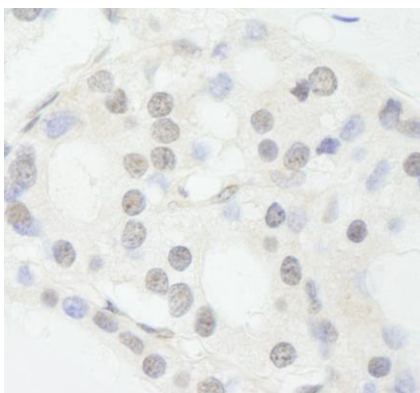
Lot No. IHC-00192-1



APPLICATIONS	IHC
SPECIES REACTIVITY	Human, Mouse
PRESUMED REACTIVITY	Based on 100% sequence identity, this antibody is predicted to react with Bovine, Dog, Horse, Rabbit, Pig, Orangutan, Monkey, Gorilla, Chimpanzee, Gray short-tailed opossum and Chinese hamster
AMOUNT	100 µl
CONCENTRATION	250 µg/ml
STORAGE/SHELF LIFE	2 – 8° C / 1 year from date of receipt
PHYSICAL STATE	Liquid
BUFFER	Tris-buffered Saline containing 0.1% BSA and 0.09% Sodium Azide
ISOTYPE	IgG
ORIGIN	USA
PRODUCTION PROCEDURES	Antibody was affinity purified using an epitope specific to NCOA62 immobilized on solid support. The epitope recognized by IHC-00192 maps to a region between residues 450 and 500 of human Nuclear Receptor Coactivator, 62 kD (SKIIP, SKI Interacting Protein) using the numbering given in entry NP_036377.1 (GeneID 22938).
APPLICATIONS	Centrifuge tube to remove product from lid. Optimal working dilutions should be determined experimentally by the investigator. Prepare working dilution immediately before use. Immunohistochemistry 1:100 – 1:500
APPLICATION NOTES	Epitope exposure is recommended. Epitope exposure with citrate buffer will enhance staining. Likely to work with frozen sections.
IHC HUMAN CONTROLS	In some cases, the antibody may be diluted further than indicated. Anaplastic Thyroid Carcinoma, Breast Carcinoma, Ovarian Carcinoma, Prostate Carcinoma, Skin Basal Cell Carcinoma, Small Cell Lung Cancer, Testicular Seminoma
IHC MOUSE CONTROLS	Squamous Cell Carcinoma, Teratoma
ADDITIONAL INFO	https://www.bethyl.com/product/IHC-00192 Use the link above to view SDS, a current list of citations, and other product specific information.

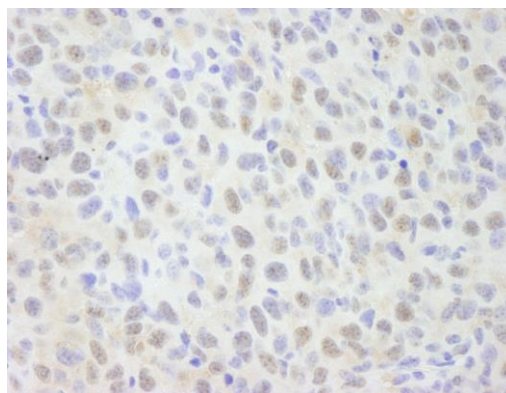
This document certifies that this product has met all of the quality control standards defined by Bethyl Laboratories, Inc.
Eric McIntush, PhD | Chief Scientific Officer

Date: June 21, 2019

**Detection of human NCOA62 by immunohistochemistry.**

Sample: FFPE section of human thyroid carcinoma.

Antibody: Affinity purified rabbit anti-NCOA62 (Cat. No. IHC-00192) used at a dilution of 1:250. *Detection:* DAB

**Detection of mouse NCOA62 by immunohistochemistry.**

Sample: FFPE section of mouse squamous cell carcinoma.

Antibody: Affinity purified rabbit anti-NCOA62 (Cat. No. IHC-00192) used at a dilution of 1:250. *Detection:* DAB