

# NONO IHC Antibody

Rabbit Polyclonal

Antigen Affinity Purified

Protein ID NP\_031389.3

Catalog No. IHC-00191

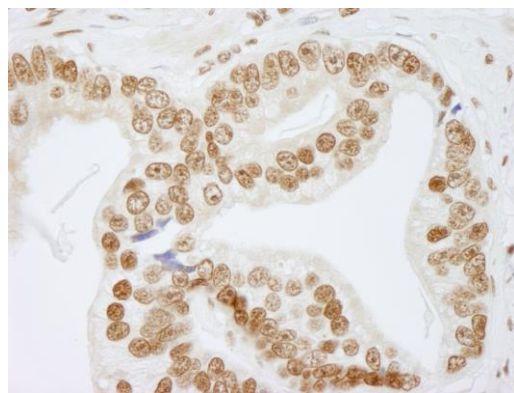
GeneID 4841

Lot No. IHC-00191-1

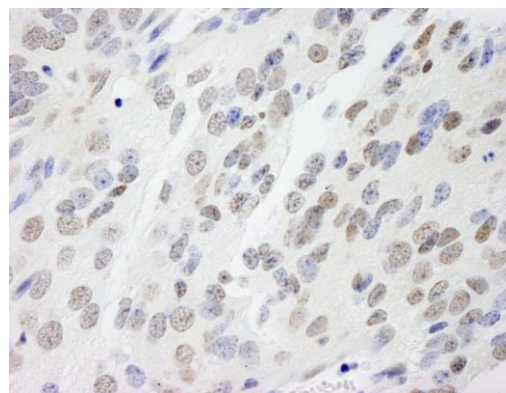


<b>APPLICATIONS</b>	IHC
<b>SPECIES REACTIVITY</b>	Human, Mouse
<b>PRESUMED REACTIVITY</b>	Based on 100% sequence identity, this antibody is predicted to react with Rat, Bovine, Dog, Horse, Rabbit, Guinea pig_10141, Pig, Panda, Orangutan, Monkey, Gorilla, Chimpanzee and Naked mole rat
<b>AMOUNT</b>	100 µl
<b>CONCENTRATION</b>	100 µg/ml
<b>STORAGE/SHELF LIFE</b>	2 - 8° C / 1 year from date of receipt
<b>PHYSICAL STATE</b>	Liquid
<b>BUFFER</b>	Tris-buffered Saline containing 0.1% BSA and 0.09% Sodium Azide
<b>ISOTYPE</b>	IgG
<b>ORIGIN</b>	USA
<b>PRODUCTION PROCEDURES</b>	Antibody was affinity purified using an epitope specific to NONO immobilized on solid support.  The epitope recognized by IHC-00191 maps to a region between residues 350 and 400 of human Non-POU Domain Containing, Octamer-binding using the numbering given in entry NP_031389.3 (GeneID 4841).
<b>APPLICATIONS</b>	Centrifuge tube to remove product from lid. Optimal working dilutions should be determined experimentally by the investigator. Prepare working dilution immediately before use.  Immunohistochemistry 1:100 - 1:500
<b>APPLICATION NOTES</b>	Epitope exposure is recommended.  Epitope exposure with citrate buffer will enhance staining.  Likely to work with frozen sections.  In some cases, the antibody may be diluted further than indicated.
<b>IHC HUMAN CONTROLS</b>	Anaplastic Thyroid Carcinoma, Bladder Cell Carcinoma, Breast Carcinoma, Colon Carcinoma, Laryngeal Squamous Cell Carcinoma, Metastatic Lymph Node, Non-Small Cell Lung Cancer, Ovarian Carcinoma, Prostate Carcinoma, Skin Basal Cell Carcinoma, Skin Melanoma, Small Cell Lung Cancer, Stomach Adenocarcinoma
<b>IHC MOUSE CONTROLS</b>	Colon Carcinoma CT26, Squamous Cell Carcinoma, Teratoma
<b>ADDITIONAL INFO</b>	<a href="https://www.bethyl.com/product/IHC-00191">https://www.bethyl.com/product/IHC-00191</a> Use the link above to view SDS, a current list of citations, and other product specific information.

This document certifies that this product has met all of the quality control standards defined by Bethyl Laboratories, Inc.  
Eric McIntush, PhD | Chief Scientific Officer Date: June 21, 2019



**Detection of human NONO by immunohistochemistry.**  
*Sample:* FFPE section of human prostate adenocarcinoma.  
*Antibody:* Affinity purified rabbit anti-NONO (Cat. No. IHC-00191) used at a dilution of 1:100. *Detection:* DAB



**Detection of mouse NONO by immunohistochemistry.**  
*Sample:* FFPE section of mouse teratoma. *Antibody:* Affinity purified rabbit anti-NONO (Cat. No. IHC-00191) used at a dilution of 1:500. *Detection:* DAB