

# JMJD1B IHC Antibody

Rabbit Polyclonal

Antigen Affinity Purified

Protein ID NP\_057688.2

Catalog No. IHC-00189

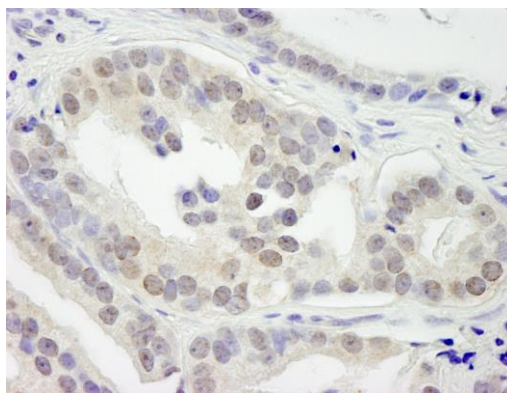
GeneID 51780

Lot No. IHC-00189-1



<b>APPLICATIONS</b>	IHC
<b>SPECIES REACTIVITY</b>	Human
<b>PRESUMED REACTIVITY</b>	Based on 100% sequence identity, this antibody is predicted to react with Mouse, Chicken, Turkey, Bovine, Dog, Horse, Rabbit, Guinea pig_10141, Pig, Panda, Orangutan, Monkey, Gorilla and Chimpanzee
<b>AMOUNT</b>	100 µl
<b>CONCENTRATION</b>	250 µg/ml
<b>STORAGE/SHELF LIFE</b>	2 – 8° C / 1 year from date of receipt
<b>PHYSICAL STATE</b>	Liquid
<b>BUFFER</b>	Tris-buffered Saline containing 0.1% BSA and 0.09% Sodium Azide
<b>ISOTYPE</b>	IgG
<b>ORIGIN</b>	USA
<b>PRODUCTION PROCEDURES</b>	Antibody was affinity purified using an epitope specific to JMJD1B immobilized on solid support.  The epitope recognized by IHC-00189 maps to a region between residues 1710 and the C-terminus (residue 1761) of human Jumonji Domain Containing 1B using the numbering given in entry NP_057688.2 (GeneID 51780).
<b>APPLICATIONS</b>	Centrifuge tube to remove product from lid. Optimal working dilutions should be determined experimentally by the investigator. Prepare working dilution immediately before use.  Immunohistochemistry 1:100 – 1:500
<b>APPLICATION NOTES</b>	Epitope exposure is recommended.  Epitope exposure with citrate buffer will enhance staining.  Likely to work with frozen sections.  In some cases, the antibody may be diluted further than indicated.
<b>IHC HUMAN CONTROLS</b>	Laryngeal Squamous Cell Carcinoma, Ovarian Carcinoma, Prostate Carcinoma
<b>ADDITIONAL INFO</b>	<a href="https://www.bethyl.com/product/IHC-00189">https://www.bethyl.com/product/IHC-00189</a> Use the link above to view SDS, a current list of citations, and other product specific information.

This document certifies that this product has met all of the quality control standards defined by Bethyl Laboratories, Inc.  
Eric McIntush, PhD | Chief Scientific Officer Date: June 21, 2019

**Detection of human JMJD1B by immunohistochemistry.**

*Sample:* FFPE section of human prostate adenocarcinoma.

*Antibody:* Affinity purified rabbit anti-JMJD1B (Cat. No. IHC-00189) used at a dilution of 1:250. *Detection:* DAB