

JMJD2A IHC Antibody

Rabbit Polyclonal

Antigen Affinity Purified

Protein ID NP_055478.1

Catalog No. IHC-00188

GeneID 9682

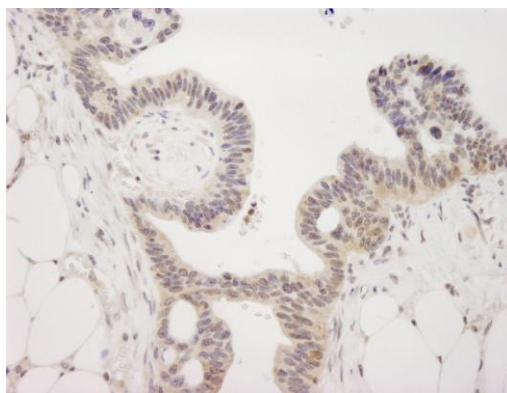
Lot No. IHC-00188-1



APPLICATIONS	IHC
SPECIES REACTIVITY	Human
PRESUMED REACTIVITY	Based on 100% sequence identity, this antibody is predicted to react with Orangutan, Gorilla, Chimpanzee, Crab-eating macaque and White-tufted-ear marmoset
AMOUNT	100 µl
CONCENTRATION	250 µg/ml
STORAGE/SHELF LIFE	2 – 8° C / 1 year from date of receipt
PHYSICAL STATE	Liquid
BUFFER	Tris-buffered Saline containing 0.1% BSA and 0.09% Sodium Azide
ISOTYPE	IgG
ORIGIN	USA
PRODUCTION PROCEDURES	Antibody was affinity purified using an epitope specific to JMJD2A immobilized on solid support. The epitope recognized by IHC-00188 maps to a region between residues 350 and 400 of human Jumonji Domain Containing 2A using the numbering given in entry NP_055478.1 (GeneID 9682).
APPLICATIONS	Centrifuge tube to remove product from lid. Optimal working dilutions should be determined experimentally by the investigator. Prepare working dilution immediately before use. Immunohistochemistry 1:100 – 1:500
APPLICATION NOTES	Epitope exposure is recommended. Epitope exposure with citrate buffer will enhance staining. Likely to work with frozen sections.
IHC HUMAN CONTROLS	In some cases, the antibody may be diluted further than indicated. Colon Carcinoma, Ovarian Carcinoma, Skin Basal Cell Carcinoma
ADDITIONAL INFO	https://www.bethyl.com/product/IHC-00188 Use the link above to view SDS, a current list of citations, and other product specific information.

This document certifies that this product has met all of the quality control standards defined by Bethyl Laboratories, Inc.
Eric McIntush, PhD | Chief Scientific Officer

Date: June 21, 2019

**Detection of human JMJD2A by immunohistochemistry.**

Sample: FFPE section of human ovarian tumor. *Antibody:* Affinity purified rabbit anti-JMJD2A (Cat. No. IHC-00188) used at a dilution of 1:250. *Detection:* DAB