

MCAF IHC Antibody

Rabbit Polyclonal

Antigen Affinity Purified

Protein ID AAQ92978.1

Catalog No. IHC-00187

GeneID 55729

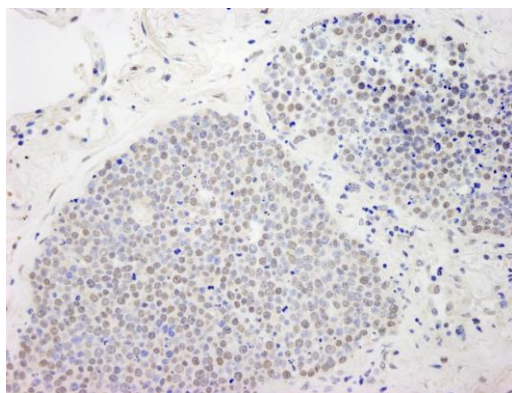
Lot No. IHC-00187-1



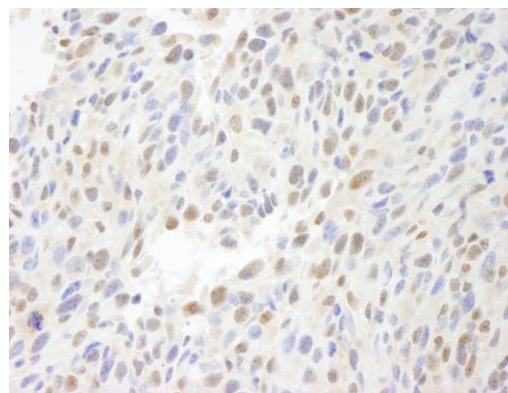
APPLICATIONS	IHC
SPECIES REACTIVITY	Human, Mouse
PRESUMED REACTIVITY	Based on 100% sequence identity, this antibody is predicted to react with Bovine, Dog, Horse, Pig, Panda, Orangutan, Monkey, Gorilla, Chimpanzee, African elephant and Crab-eating macaque
AMOUNT	100 µl
CONCENTRATION	250 µg/ml
STORAGE/SHELF LIFE	2 – 8° C / 1 year from date of receipt
PHYSICAL STATE	Liquid
BUFFER	Tris-buffered Saline containing 0.1% BSA and 0.09% Sodium Azide
ISOTYPE	IgG
ORIGIN	USA
PRODUCTION PROCEDURES	Antibody was affinity purified using an epitope specific to MCAF immobilized on solid support. The epitope recognized by IHC-00187 maps to a region between residues 25 and 100 of human MBD1-containing Chromatin Associated Factor using the numbering given in entry AAQ92978.1 (GeneID 55729).
APPLICATIONS	Centrifuge tube to remove product from lid. Optimal working dilutions should be determined experimentally by the investigator. Prepare working dilution immediately before use. Immunohistochemistry 1:100 – 1:500
APPLICATION NOTES	Epitope exposure is recommended. Epitope exposure with citrate buffer will enhance staining. Likely to work with frozen sections.
IHC HUMAN CONTROLS	In some cases, the antibody may be diluted further than indicated. Anaplastic Thyroid Carcinoma, Breast Carcinoma, Laryngeal Squamous Cell Carcinoma, Non-Small Cell Lung Cancer, Ovarian Carcinoma, Prostate Carcinoma, Skin Melanoma, Small Cell Lung Cancer
IHC MOUSE CONTROLS	Squamous Cell Carcinoma, Teratoma
ADDITIONAL INFO	https://www.bethyl.com/product/IHC-00187 Use the link above to view SDS, a current list of citations, and other product specific information.

This document certifies that this product has met all of the quality control standards defined by Bethyl Laboratories, Inc.
Eric McIntush, PhD | Chief Scientific Officer

Date: June 21, 2019



Detection of human MCAF by immunohistochemistry.
Sample: FFPE section of human small cell lung cancer.
Antibody: Affinity purified rabbit anti-MCAF (Cat. No. IHC-00187) used at a dilution of 1:250. *Detection:* DAB



Detection of mouse MCAF by immunohistochemistry.
Sample: FFPE section of mouse squamous cell carcinoma.
Antibody: Affinity purified rabbit anti-MCAF (Cat. No. IHC-00187) used at a dilution of 1:250. *Detection:* DAB